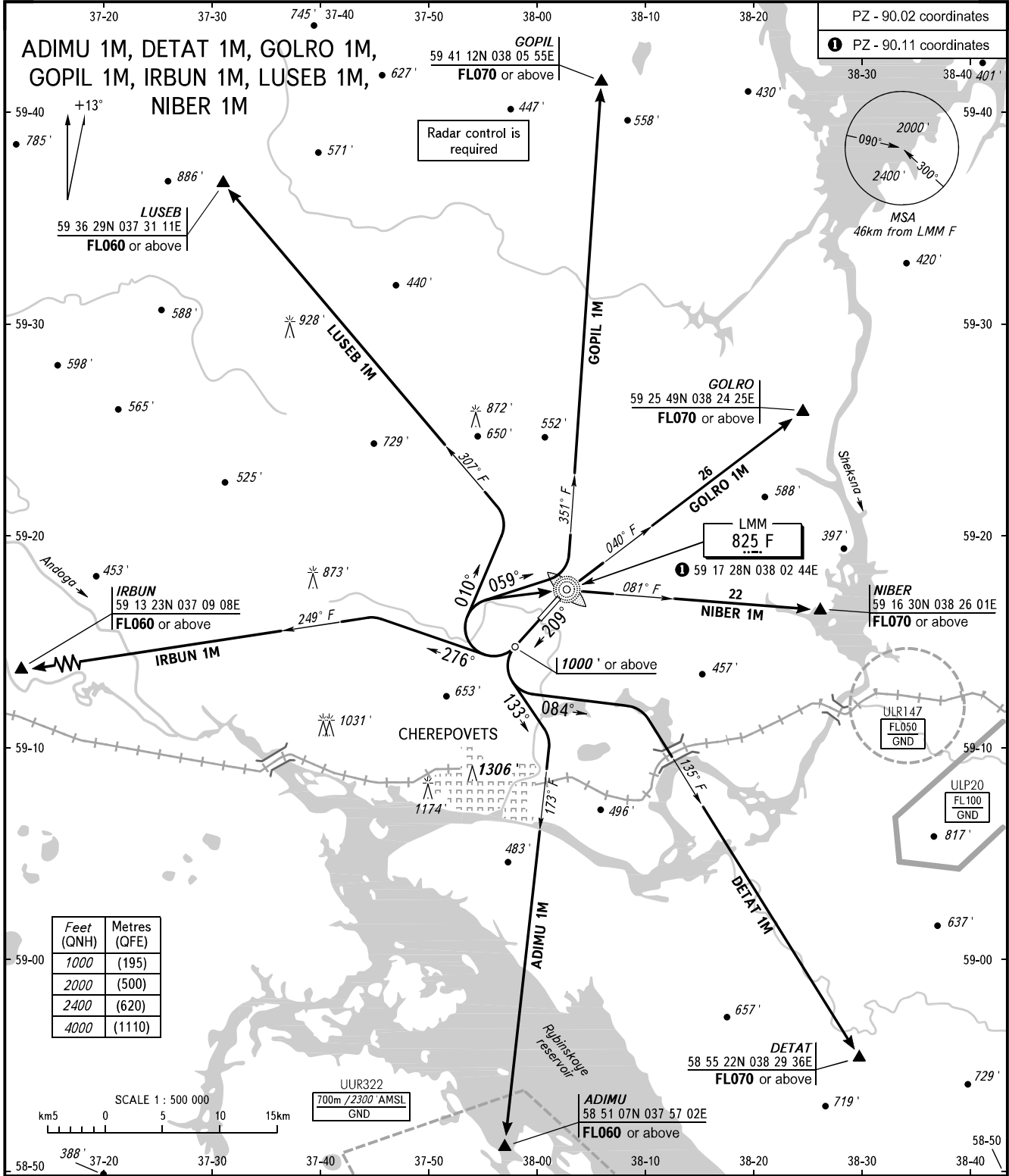


STANDARD DEPARTURE CHART  
INSTRUMENT (SID) - ICAO

CHEREPOVETS, RUSSIA  
CHEREPOVETS  
RWY 21

TRANSITION  
ALTITUDE : 4000'



Feet (QNH)	Metres (QFE)
1000	(195)
2000	(500)
2400	(620)
4000	(1110)

TOWER 119.200

**WARNING**  
Turn before DER is PROHIBITED.  
The minimum climb gradients are as follows (required due to the airspace structure):  
- 3.6% up to FL060 for SID ADIMU 1M;  
- 3.7% up to FL070 for SID DETAT 1M;  
- 3.8% up to FL070 for SID GOLRO 1M;  
- 4.1% up to FL070 for SID NIBER 1M, or by ATC unit instruction.

BEARINGS AND TRACKS ARE MAGNETIC  
ALTITUDES AND ELEVATIONS IN FEET  
DISTANCES IN KILOMETRES