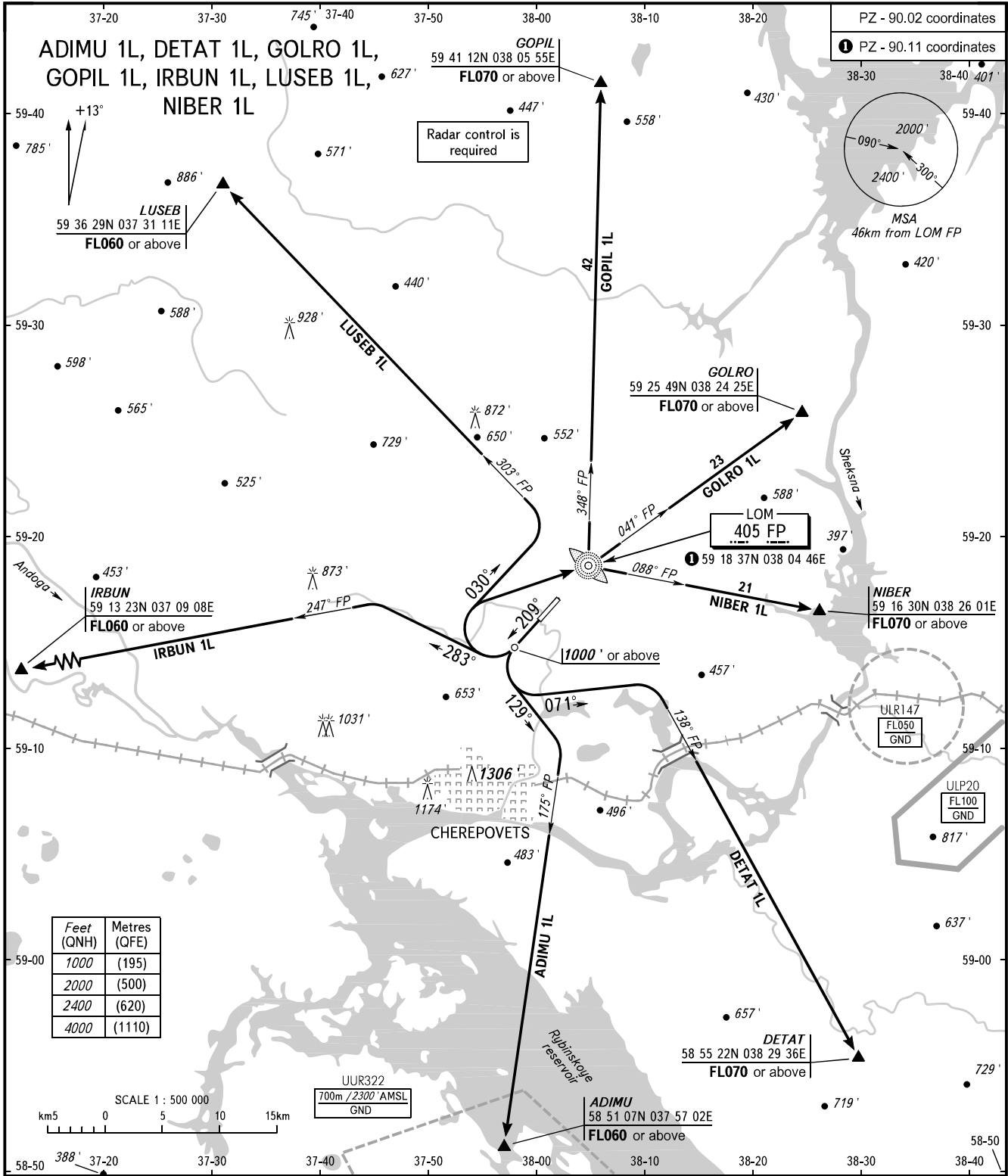


STANDARD DEPARTURE CHART
INSTRUMENT (SID) - ICAO

CHEREPOVETS, RUSSIA
CHEREPOVETS
RWY 21

TRANSITION
ALTITUDE : 4000'



TOWER 119.200

WARNING
Turn before DER is PROHIBITED.
The minimum climb gradients are as follows (required due to the airspace structure):
- 3.5% up to FL060 for SID ADIMU 1L;
- 3.6% up to FL070 for SID DETAT 1L;
- 3.9% up to FL070 for SID GOLRO 1L;
- 4.1% up to FL070 for SID NIBER 1L,
or by ATC unit instruction.

BEARINGS AND TRACKS ARE MAGNETIC
ALTITUDES AND ELEVATIONS IN FEET
DISTANCES IN KILOMETRES