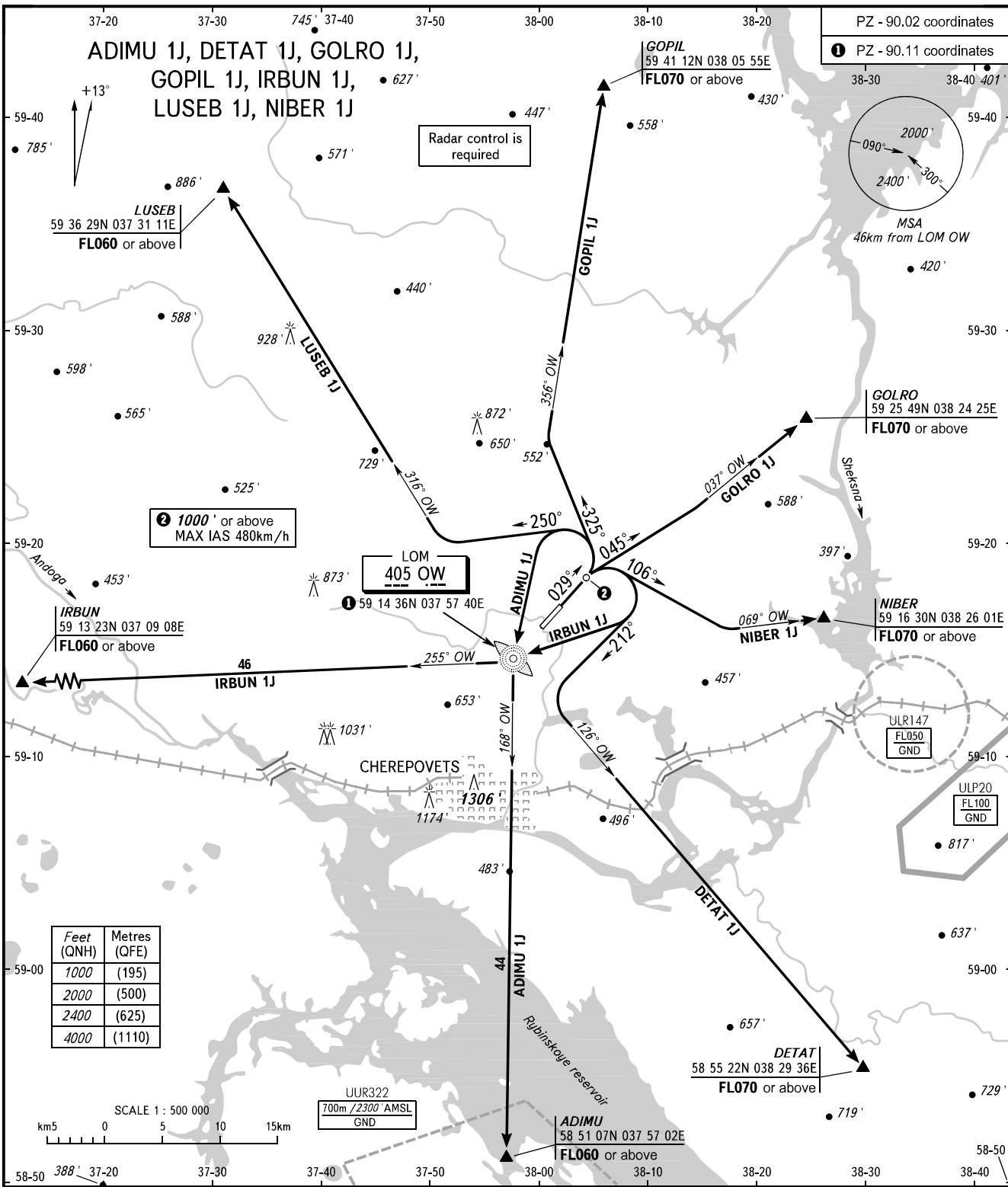


STANDARD DEPARTURE CHART
INSTRUMENT (SID) - ICAO

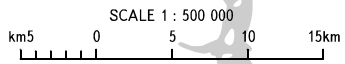
CHEREPOVETS, RUSSIA
CHEREPOVETS
RWY 03

TRANSITION
ALTITUDE : 4000'



② 1000' or above
MAX IAS 480km/h

Feet (QNH)	Metres (QFE)
1000	(195)
2000	(500)
2400	(625)
4000	(1110)



TOWER 119.200

WARNING
Turn before DER is PROHIBITED.
The minimum climb gradients are as follows (required due to the airspace structure):
- 4.4% up to FL070 for SID GOPIL 1J;
- 7.6% up to FL070 for SID GOLRO 1J;
- 8.0% up to FL070 for SID NIBER 1J,
or by ATC unit instruction.

BEARINGS AND TRACKS ARE MAGNETIC
ALTITUDES AND ELEVATIONS IN FEET
DISTANCES IN KILOMETRES

CHANGE: New chart