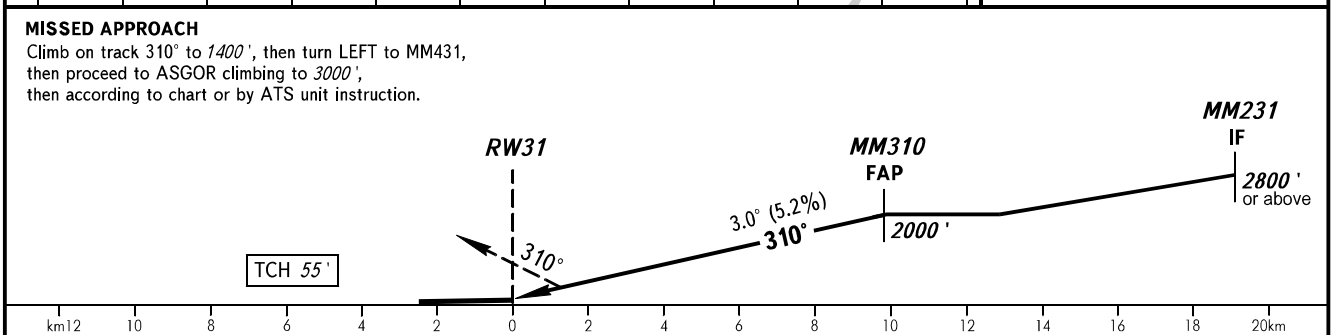
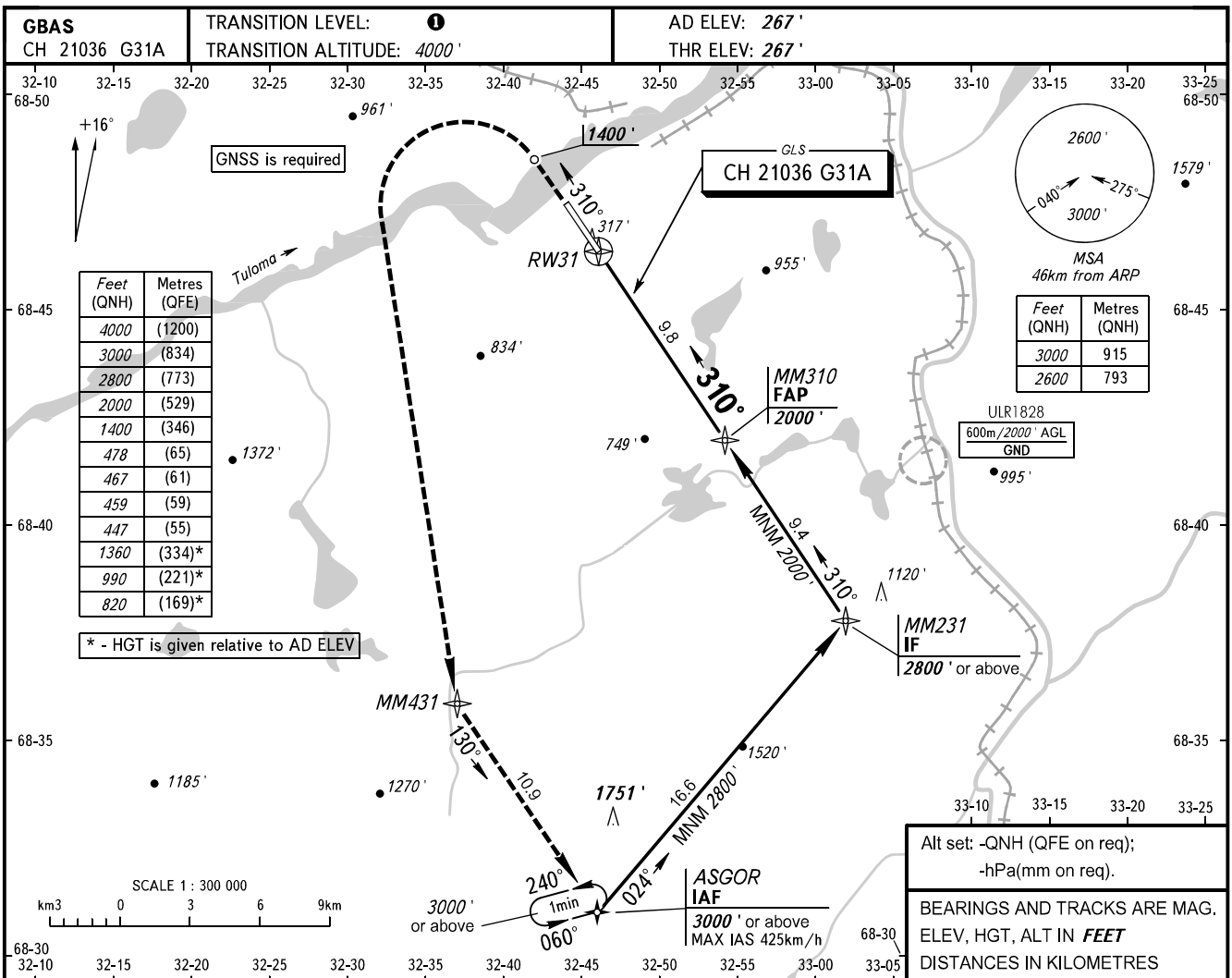


**INSTRUMENT
APPROACH
CHART - ICAO**

TOWER **120.300**

MURMANSK
MURMANSK
GLS Y RWY 31



OCA(H)		A	B	C	D						
Straight-in	CAT I	447' (180')	459' (192')	467' (200')	478' (211')	TRANSITION LEVEL: - FL050 when QNH is 1013 hPa (760mm mercury column) or above; - FL060 when QNH is 977 hPa (733mm mercury column) or above, but less than 1013 hPa (760mm mercury column); - FL070 when QNH is less than 977 hPa (733mm mercury column).					
	Approach										
Circling		820' (550')	990' (730')	1360' (1100')	1360' (1100')						
GROUND SPEED		km/h	150	180	210	240	270	300	330	360	360
RATE OF DESCENT		m/s	2.2	2.6	3.0	3.5	3.9	4.3	4.8	5.2	5.6
		ft/min	427	512	597	682	768	853	938	1024	1109

WARNING
Visual manoeuvring to the north-east of the AD is prohibited.

CHANGE: New chart