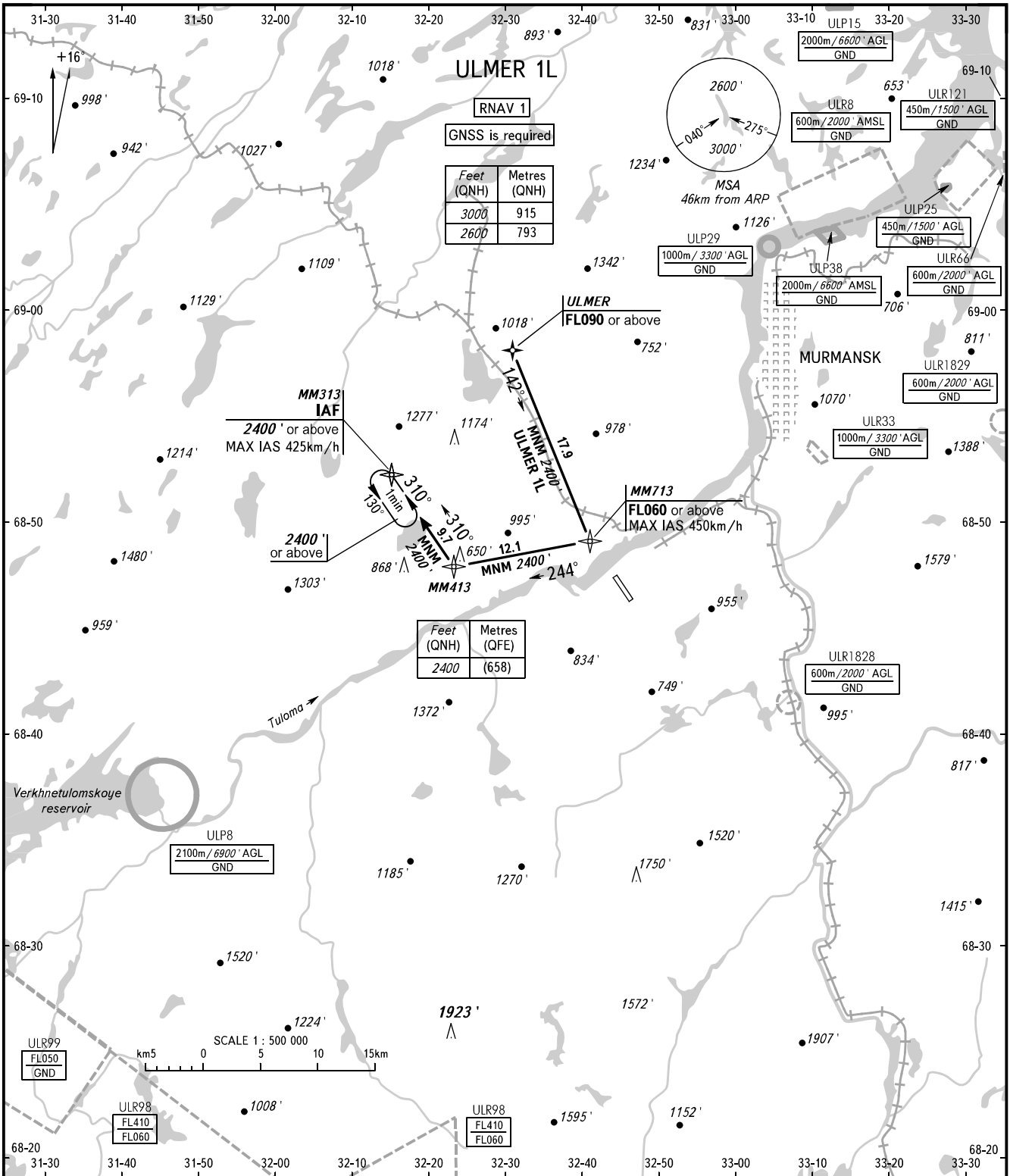


STANDARD ARRIVAL CHART
INSTRUMENT (STAR) - ICAO

MURMANSK, RUSSIA
MURMANSK
RNAV RWY 13

TRANSITION
LEVEL: **1**



TOWER 120.300

- 1** TRANSITION LEVEL:
- FL050 when QNH is 1013 hPa (760mm mercury column) or above;
 - FL060 when QNH is 977 hPa (733mm mercury column) or above, but less than 1013 hPa (760mm mercury column);
 - FL070 when QNH is less than 977 hPa (733mm mercury column).

BEARINGS AND TRACKS ARE MAGNETIC
ALTITUDES AND ELEVATIONS IN FEET
DISTANCES IN KILOMETRES

Alt set: -QNH(QFE on req);
-hPa(mm on req).

CHANGE: New chart