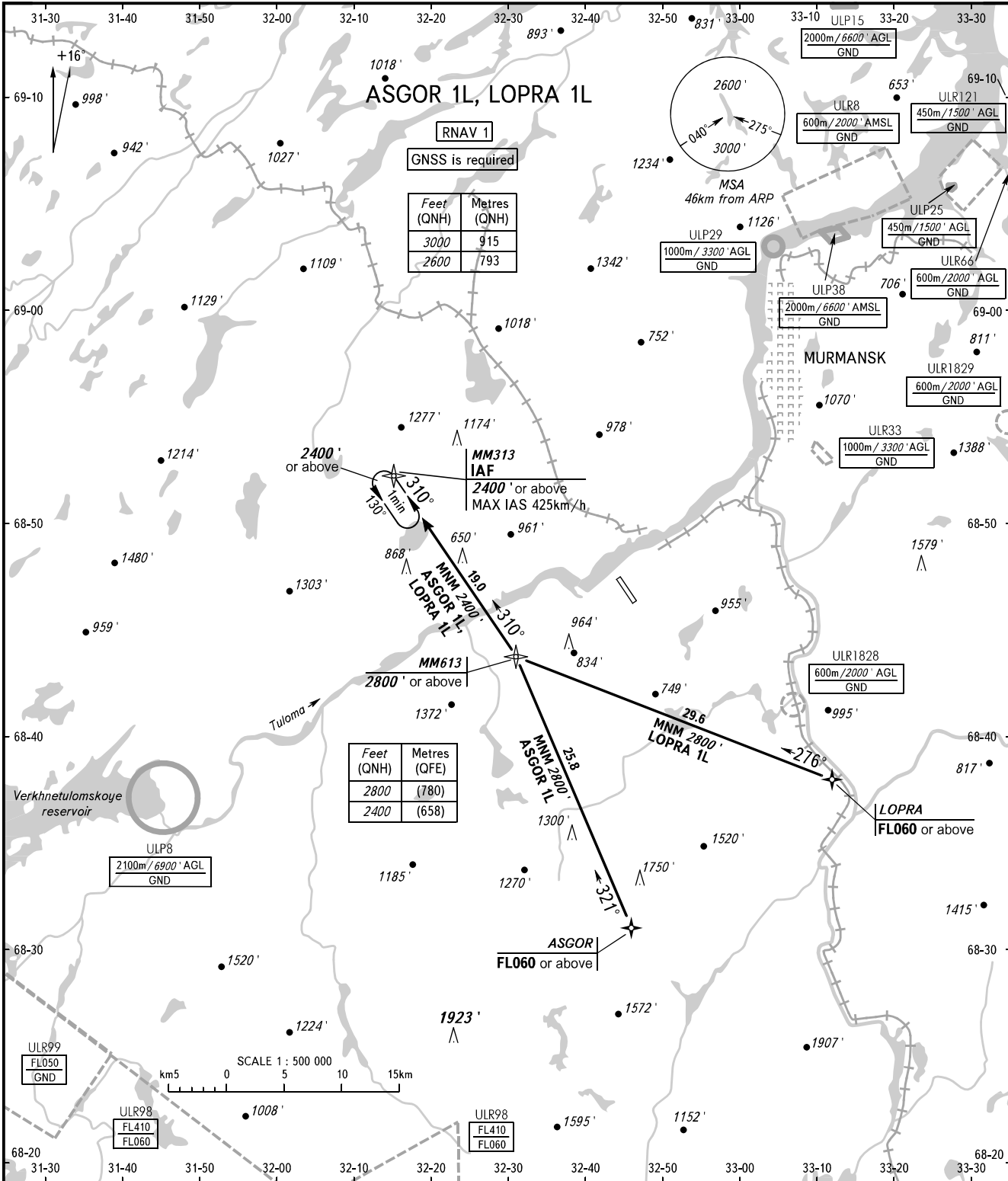


STANDARD ARRIVAL CHART  
INSTRUMENT (STAR) - ICAO

MURMANSK, RUSSIA  
MURMANSK  
RNAV RWY 13

TRANSITION  
LEVEL: **1**



TOWER 120.300

- 1** TRANSITION LEVEL:
- FL050 when QNH is 1013 hPa (760mm mercury column) or above;
  - FL060 when QNH is 977 hPa (733mm mercury column); but less than 1013 hPa (760mm mercury column);
  - FL070 when QNH is less than 977 hPa (733mm mercury column).

BEARINGS AND TRACKS ARE MAGNETIC  
ALTITUDES AND ELEVATIONS IN  
DISTANCES IN KILOMETRES

Alt set: -QNH(QFE on req);  
-hPa(mm on req).

CHANGE: New chart