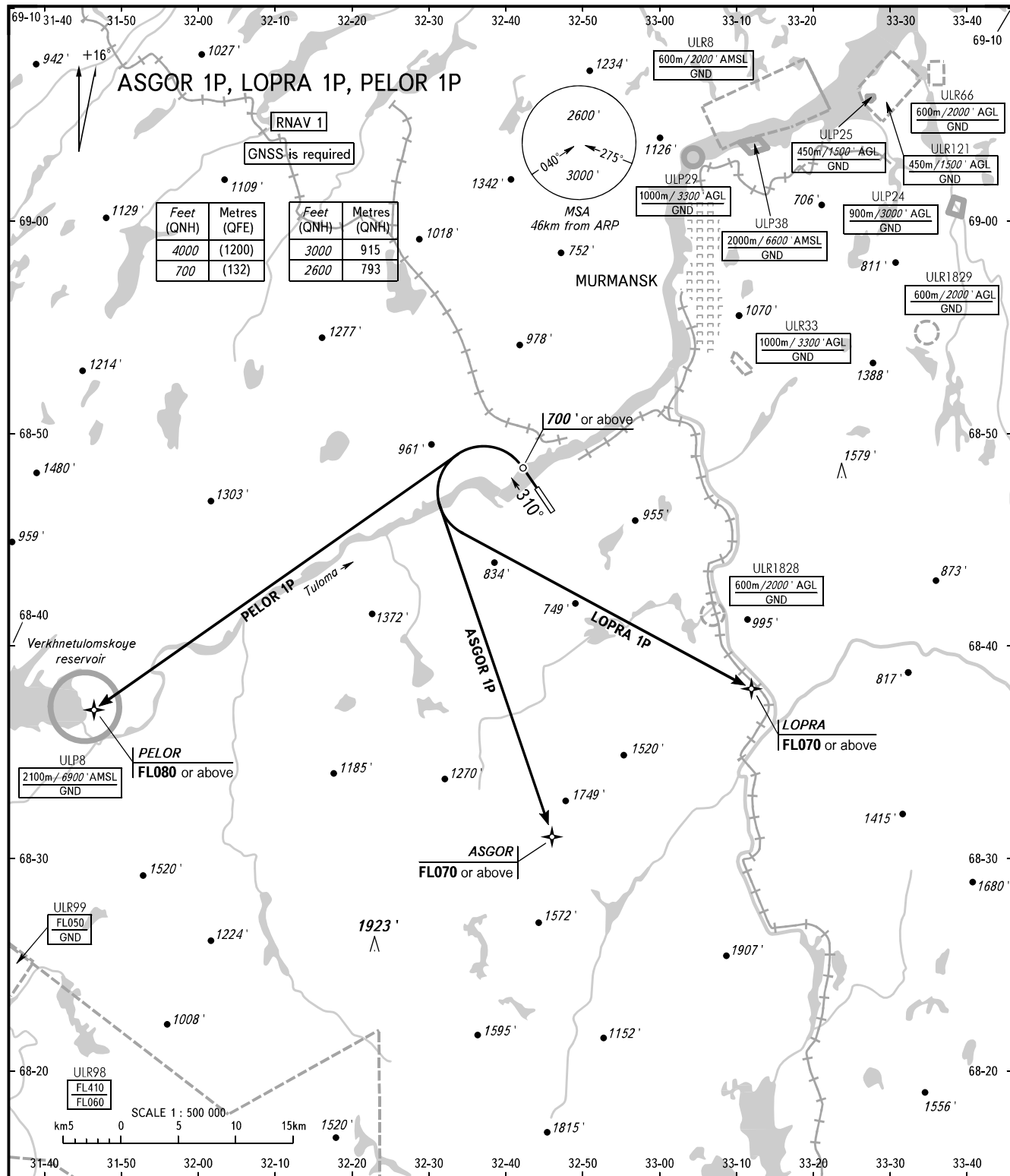


STANDARD DEPARTURE CHART
INSTRUMENT (SID) - ICAO

TRANSITION
ALTITUDE: **4000'**

MURMANSK, RUSSIA
MURMANSK
RNAV RWY 31



TOWER **120.300**

- WARNING:**
- 1. The minimum climb gradients are as follows:
 - LOPRA 1P, ASGOR 1P - 4.0% up to FL070;
 - PELOR 1P - 4.5% up to FL080.
 - 2. If unable to maintain minimum climb gradient the flight crew shall advise ATS unit.

BEARINGS AND TRACKS ARE MAGNETIC
ALTITUDES AND ELEVATIONS IN FEET
DISTANCES IN KILOMETRES

Alt set: -QNH(QFE on req);
-hPa(mm on req).