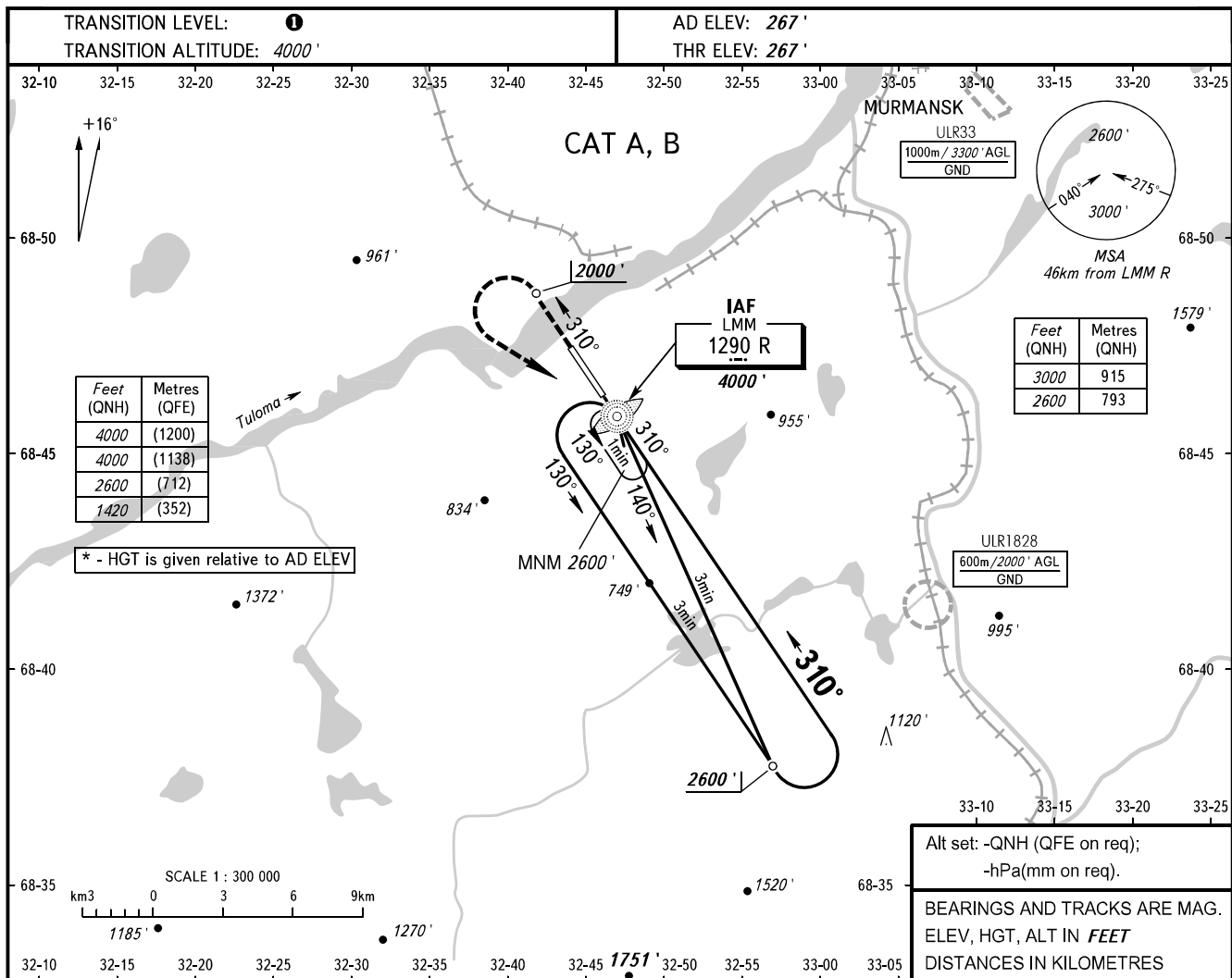


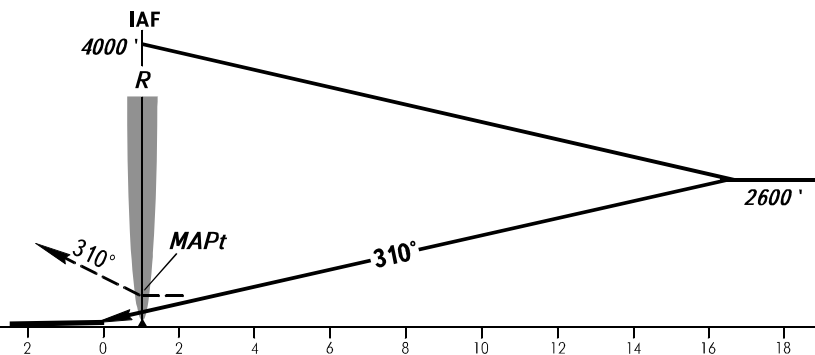
**INSTRUMENT
APPROACH
CHART - ICAO**

TOWER **120.300**

MURMANSK, RUSSIA
MURMANSK
NDB RWY 31



MISSED APPROACH
Climb on track 310° to 2000', then turn LEFT to LMM R climbing to 2600' or by ATS unit instruction.



OCA(H)	A	B	C	D
Straight-in	1420' (1150')	1420' (1150')		
Approach				
Circling	1420' (1150')	1420' (1150')		
MAPt at LMM R. Timing not authorized for defining MAPt.				

1 TRANSITION LEVEL:
- FL050 when QNH is 1013 hPa (760mm mercury column) or above;
- FL060 when QNH is 977 hPa (733mm mercury column) or above, but less than 1013 hPa (760mm mercury column);
- FL070 when QNH is less than 977 hPa (733mm mercury column).

WARNING
Visual manoeuvring to the north-east of the AD is prohibited.

