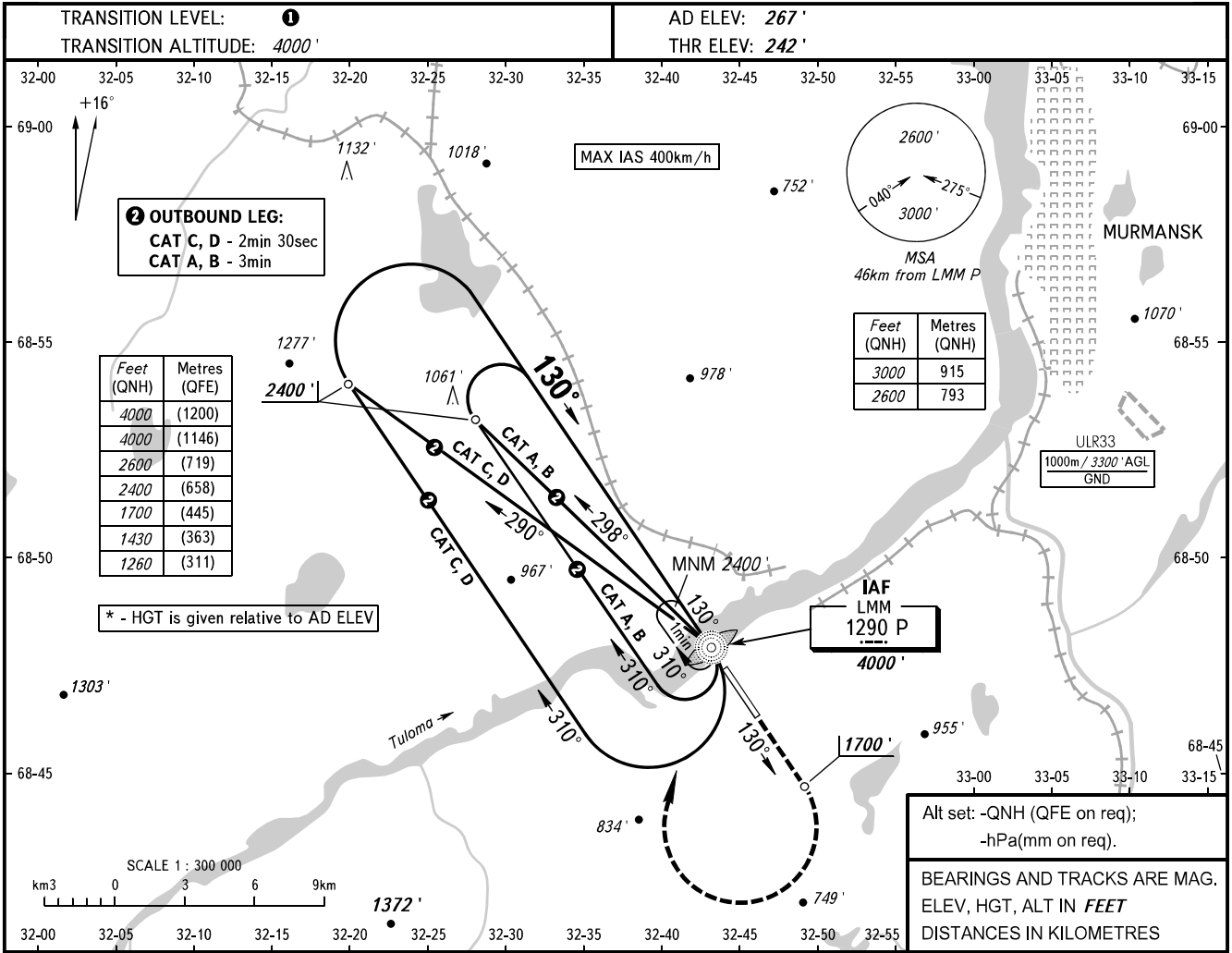


**INSTRUMENT
APPROACH
CHART - ICAO**

TOWER **120.300**

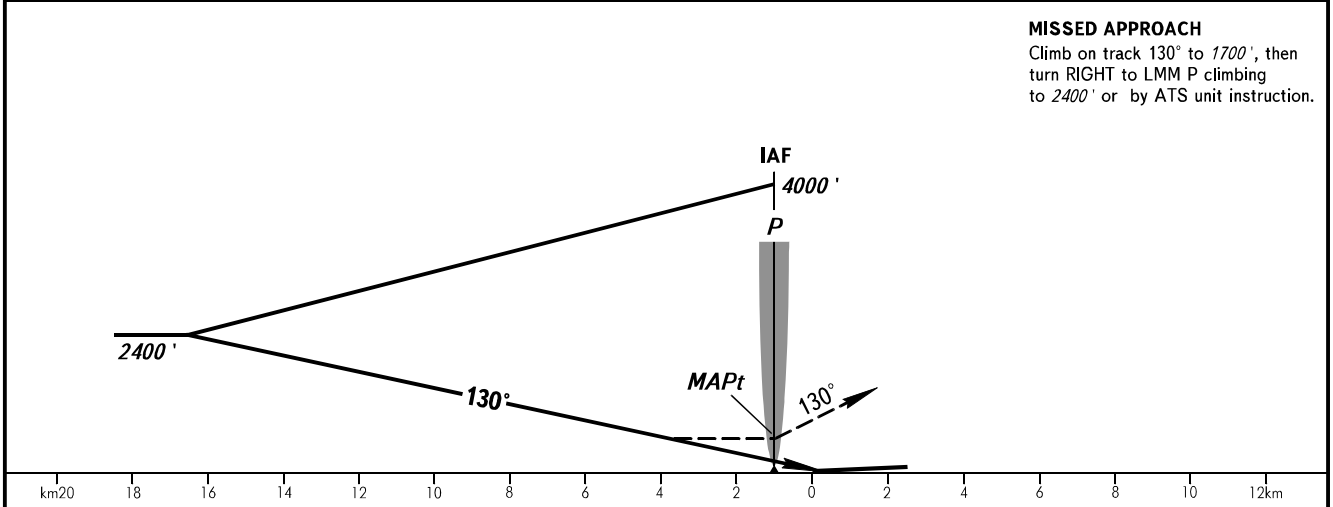
**MURMANSK, RUSSIA
MURMANSK
NDB RWY 13**



Alt set: -QNH (QFE on req);
-hPa(mm on req).

BEARINGS AND TRACKS ARE MAG.
ELEV, HGT, ALT IN FEET
DISTANCES IN KILOMETRES

MISSED APPROACH
Climb on track 130° to 1700', then turn RIGHT to LMM P climbing to 2400' or by ATS unit instruction.



OCA(H)		A	B	C	D
Straight-in Approach		1260' (1020')	1430' (1190')	1430' (1190')	1430' (1190')
Circling		1260' (1020')	1430' (1190')	1430' (1190')	1430' (1190')
MAPt at LMM P. Timing not authorized for defining MAPt.					

1 **TRANSITION LEVEL:**
- FL050 when QNH is 1013 hPa (760mm mercury column) or above;
- FL060 when QNH is 977 hPa (733mm mercury column) or above, but less than 1013 hPa (760mm mercury column);
- FL070 when QNH is less than 977 hPa (733mm mercury column).

WARNING
Visual manoeuvring to the north-east of the AD is prohibited.

CHANGE: New chart