

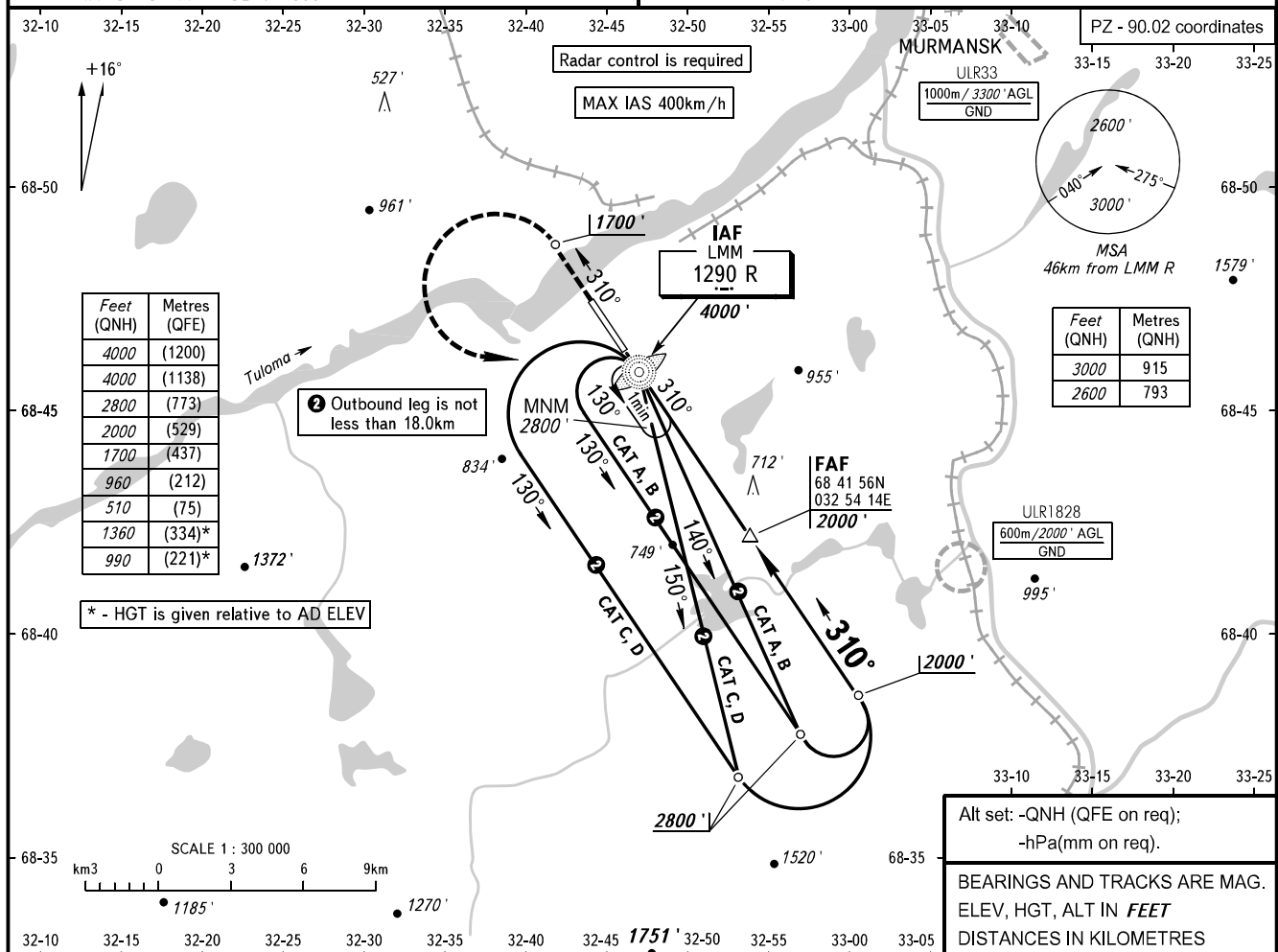
**INSTRUMENT
APPROACH
CHART - ICAO**

**MURMANSK, RUSSIA
MURMANSK
NDB RWY 31**

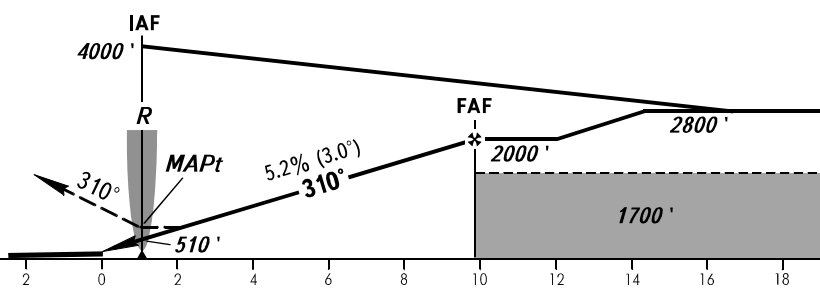
TOWER **120.300**

TRANSITION LEVEL: **1**
TRANSITION ALTITUDE: **4000'**

AD ELEV: **267'**
THR ELEV: **267'**



MISSED APPROACH
Climb on track 310° to 1700', then turn LEFT to LMM R climbing to 2800' or by ATS unit instruction.



OCA(H)		A	B	C	D					
Straight-in Approach		960' (700')	960' (700')	960' (700')	960' (700')					
Circling		960' (700')	990' (730')	1360' (1100')	1360' (1100')					
MAPt at LMM R. Timing not authorized for defining MAPt.										
GROUND SPEED	km/h	150	180	210	240	270	300	330	360	390
RATE OF DESCENT	m/s	2.2	2.6	3.0	3.5	3.9	4.3	4.8	5.2	5.6
	ft/min	427	512	597	682	768	853	938	1024	1109

1 TRANSITION LEVEL:
- FLO50 when QNH is 1013 hPa (760mm mercury column) or above;
- FLO60 when QNH is 977 hPa (733mm mercury column) or above, but less than 1013 hPa (760mm mercury column);
- FLO70 when QNH is less than 977 hPa (733mm mercury column).

WARNING
Visual manoeuvring to the north-east of the AD is prohibited.

