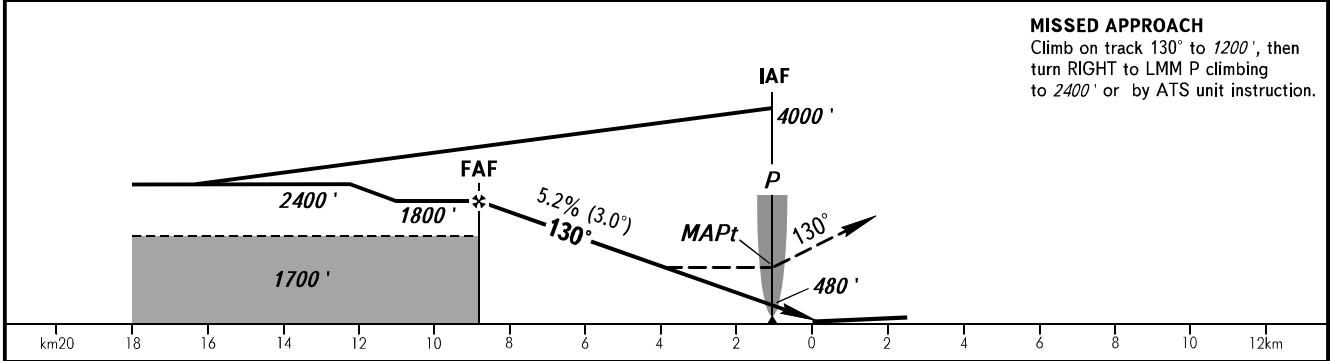
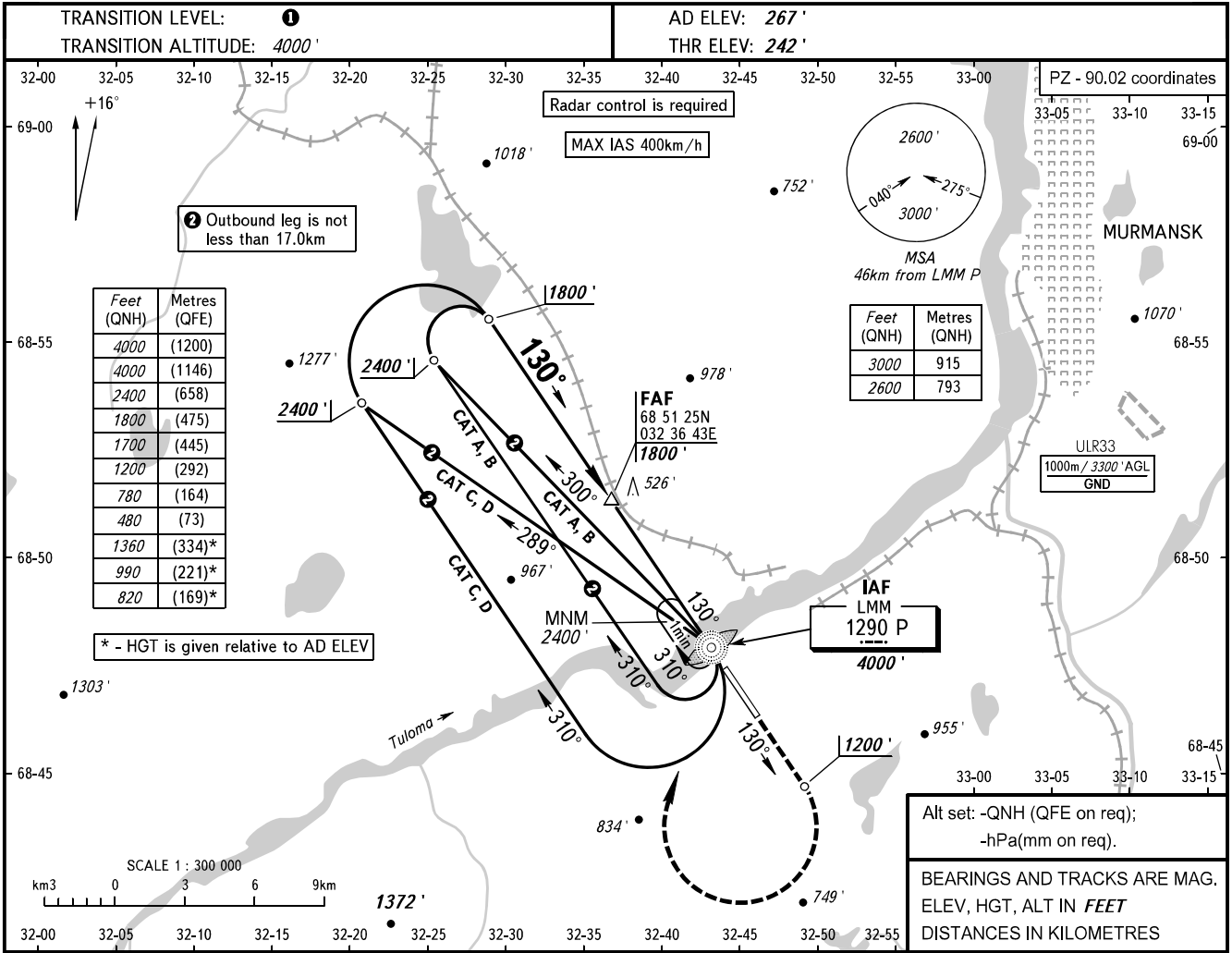


**INSTRUMENT
APPROACH
CHART - ICAO**

TOWER **120.300**

**MURMANSK, RUSSIA
MURMANSK
NDB RWY 13**



OCA(H)	A	B	C	D
Straight-in Approach	780' (540')	780' (540')	780' (540')	780' (540')
Circling	820' (550')	990' (730')	1360' (1100')	1360' (1100')
MAPt at LMM P. Timing not authorized for defining MAPt.				

1 TRANSITION LEVEL:
 - FL050 when QNH is 1013 hPa (760mm mercury column) or above;
 - FL060 when QNH is 977 hPa (733mm mercury column) or above, but less than 1013 hPa (760mm mercury column);
 - FL070 when QNH is less than 977 hPa (733mm mercury column).

WARNING
 Visual manoeuvring to the north-east of the AD is prohibited.

GROUND SPEED	km/h	150	180	210	240	270	300	330	360	390
RATE OF DESCENT	m/s	2.2	2.6	3.0	3.5	3.9	4.3	4.8	5.2	5.6
	ft/min	427	512	597	682	768	853	938	1024	1109

CHANGE: New chart