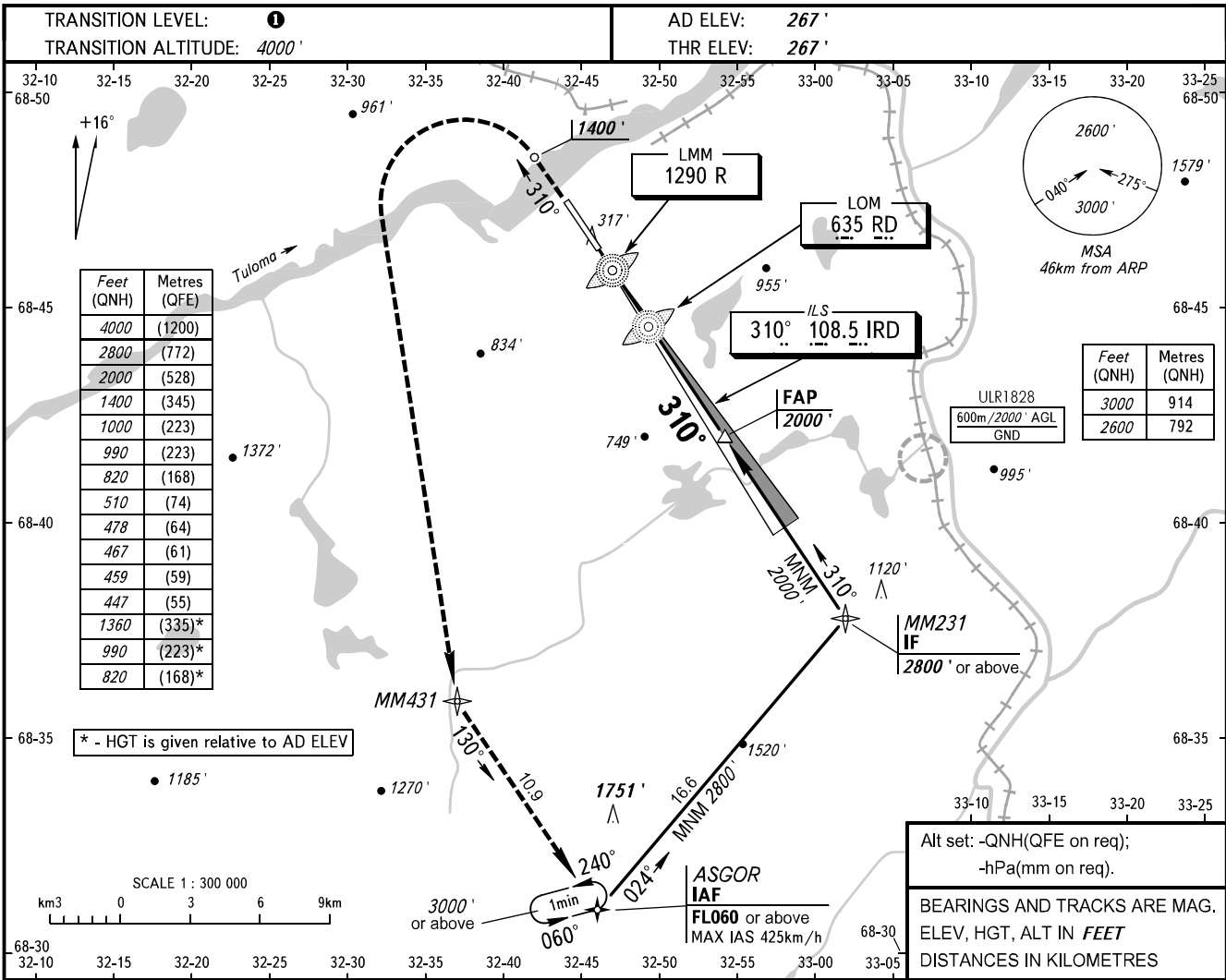


**INSTRUMENT
APPROACH
CHART - ICAO**

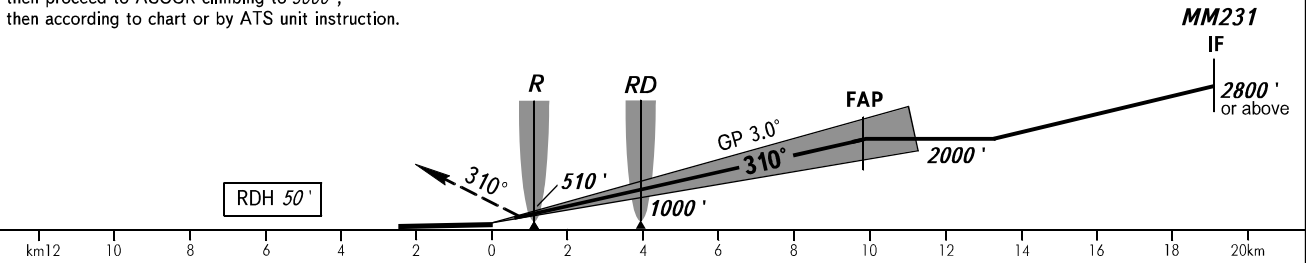
TOWER **120.300**

MURMANSK, RUSSIA
MURMANSK
ILS Z RWY 31 CAT I



MISSED APPROACH

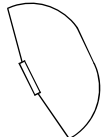
Climb on track 310° to 1400', then turn LEFT to MM431, then proceed to ASGOR climbing to 3000', then according to chart or by ATS unit instruction.



OCA(H)		A	B	C	D
Straight-in	CAT I	447' (180')	459' (192')	467' (200')	478' (211')
	Approach				
Circling		820' (550')	990' (730')	1360' (1100')	1360' (1100')

1 TRANSITION LEVEL:
- FL050 when QNH is 1013 hPa (760mm mercury column) or above;
- FL060 when QNH is 977 hPa (733mm mercury column) or above, but less than 1013 hPa (760mm mercury column);
- FL070 when QNH is less than 977 hPa (733mm mercury column).

WARNING
Visual manoeuvring to the north-east of the AD is prohibited.



GROUND SPEED	km/h	150	180	210	240	270	300	330	360	360
RATE OF DESCENT	m/s	2.2	2.6	3.0	3.5	3.9	4.3	4.8	5.2	5.6
	ft/min	427	512	597	682	768	853	938	1024	1109