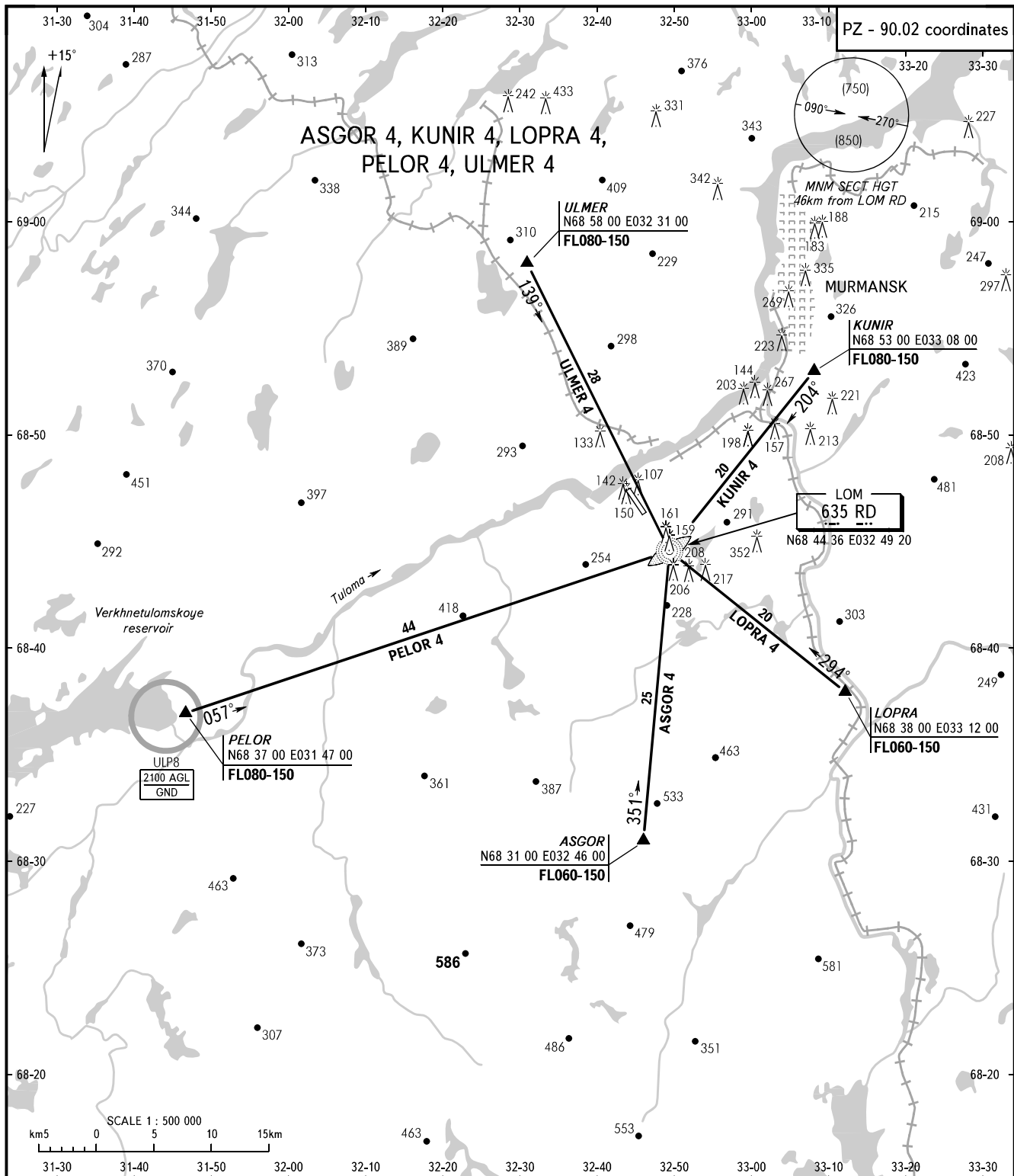


**MURMANSK, RUSSIA**  
MURMANSK  
RWY 31

STANDARD ARRIVAL CHART  
INSTRUMENT (STAR) - ICAO

TRANSITION  
LEVEL: **1**

PZ - 90.02 coordinates



CONTROL TOWER **132.1**  
**120.3**

- 1** TRANSITION LEVEL:
- FL050 when atmospheric pressure is 753mm mercury column or above;
  - FL060 when atmospheric pressure is 753-726mm mercury column;
  - FL070 when atmospheric pressure is 726mm mercury column or less.

BEARINGS AND TRACKS ARE MAGNETIC  
ALTITUDES, HEIGHTS AND ELEVATIONS ARE IN METRES  
DISTANCES ARE IN KILOMETRES