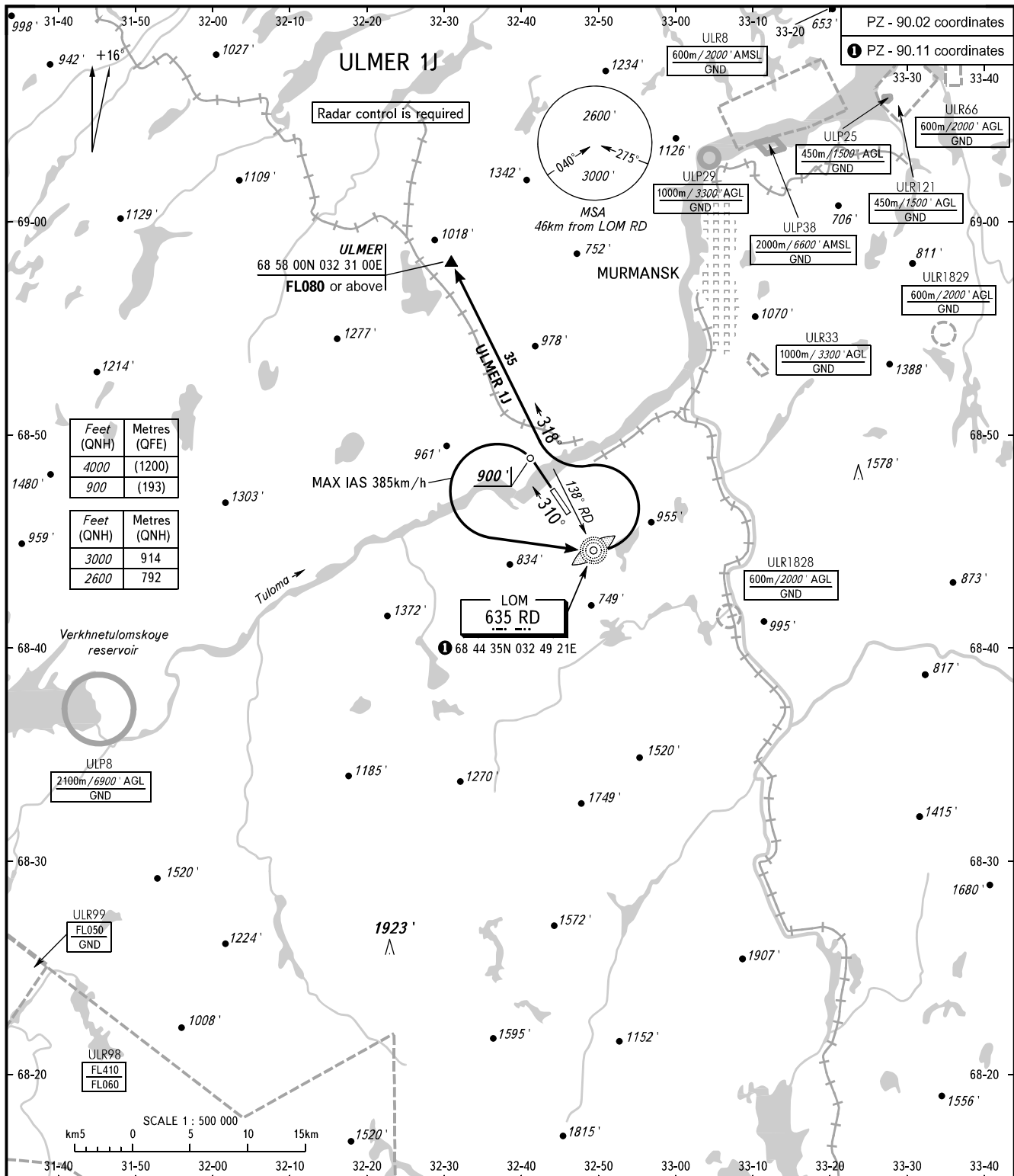


STANDARD DEPARTURE CHART
INSTRUMENT (SID) - ICAO

TRANSITION
ALTITUDE: **4000'**

MURMANSK, RUSSIA
MURMANSK
RWY 31



Feet (QNH)	Metres (QFE)
4000	(1200)
900	(193)

Feet (QNH)	Metres (QNH)
3000	914
2600	792

PZ - 90.02 coordinates
PZ - 90.11 coordinates

TOWER **120.300**

- WARNING:**
1. Turn before passing DER is PROHIBITED.
 2. The minimum climb gradient is 4.0% up to FL080.
 3. If unable to maintain minimum climb gradient the flight crew shall advise ATS unit.

BEARINGS AND TRACKS ARE MAGNETIC
ALTITUDES AND ELEVATIONS IN **FEET**
DISTANCES IN KILOMETRES

Alt set: -QNH(QFE on req);
-hPa(mm on req).