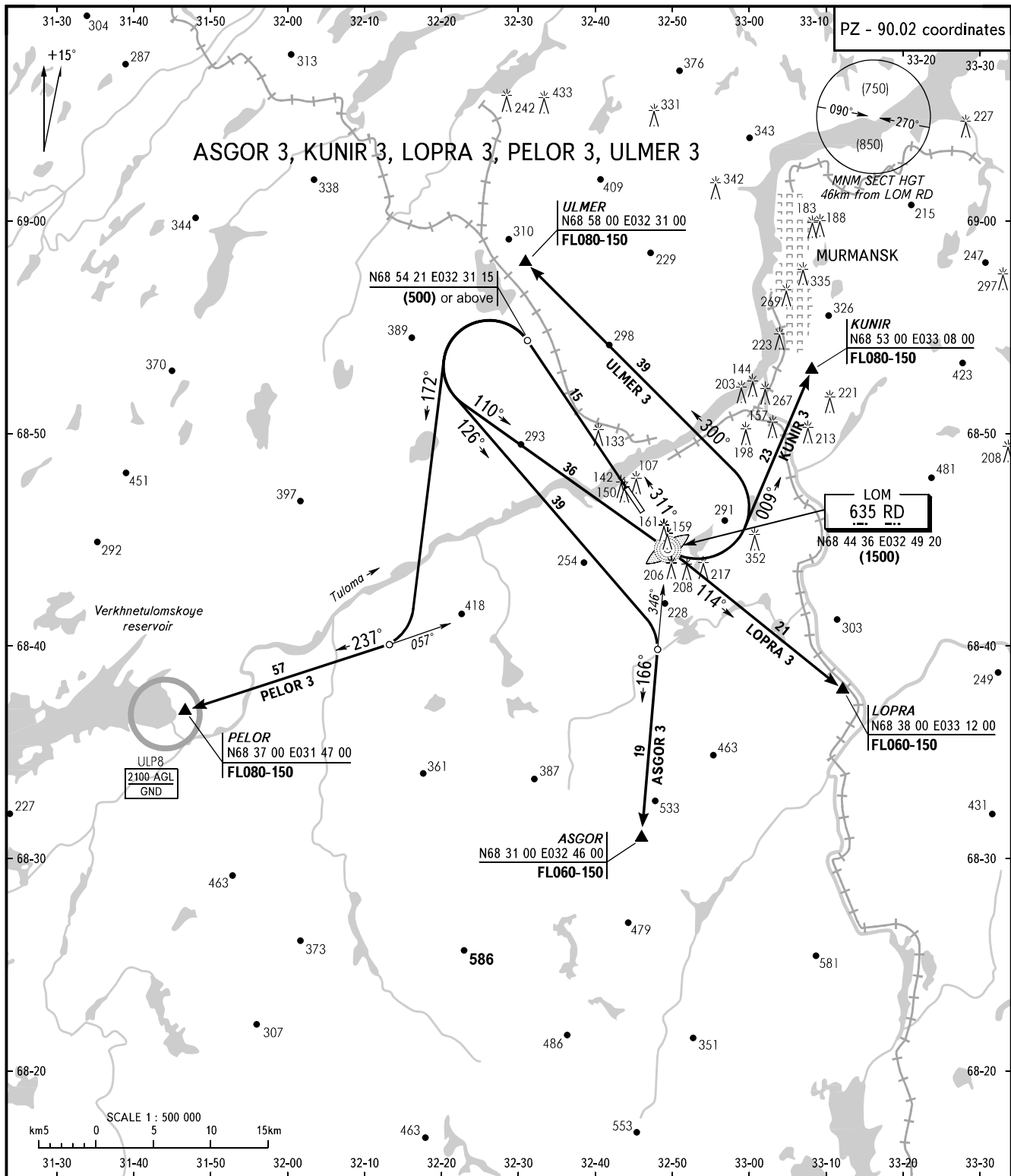


STANDARD DEPARTURE CHART
INSTRUMENT (SID) - ICAO

TRANSITION
HEIGHT: (900)

MURMANSK, RUSSIA
MURMANSK
RWY 31



TOWER CONTROL 120.3
CONTROL 132.1

WARNING
If unable to reach the flight level assigned for the departure corridor ACFT shall climb according to the established rectangular traffic pattern by ATC controller's instruction.

BEARINGS AND TRACKS ARE MAGNETIC
ALTITUDES, HEIGHTS AND ELEVATIONS ARE IN METRES
DISTANCES ARE IN KILOMETRES