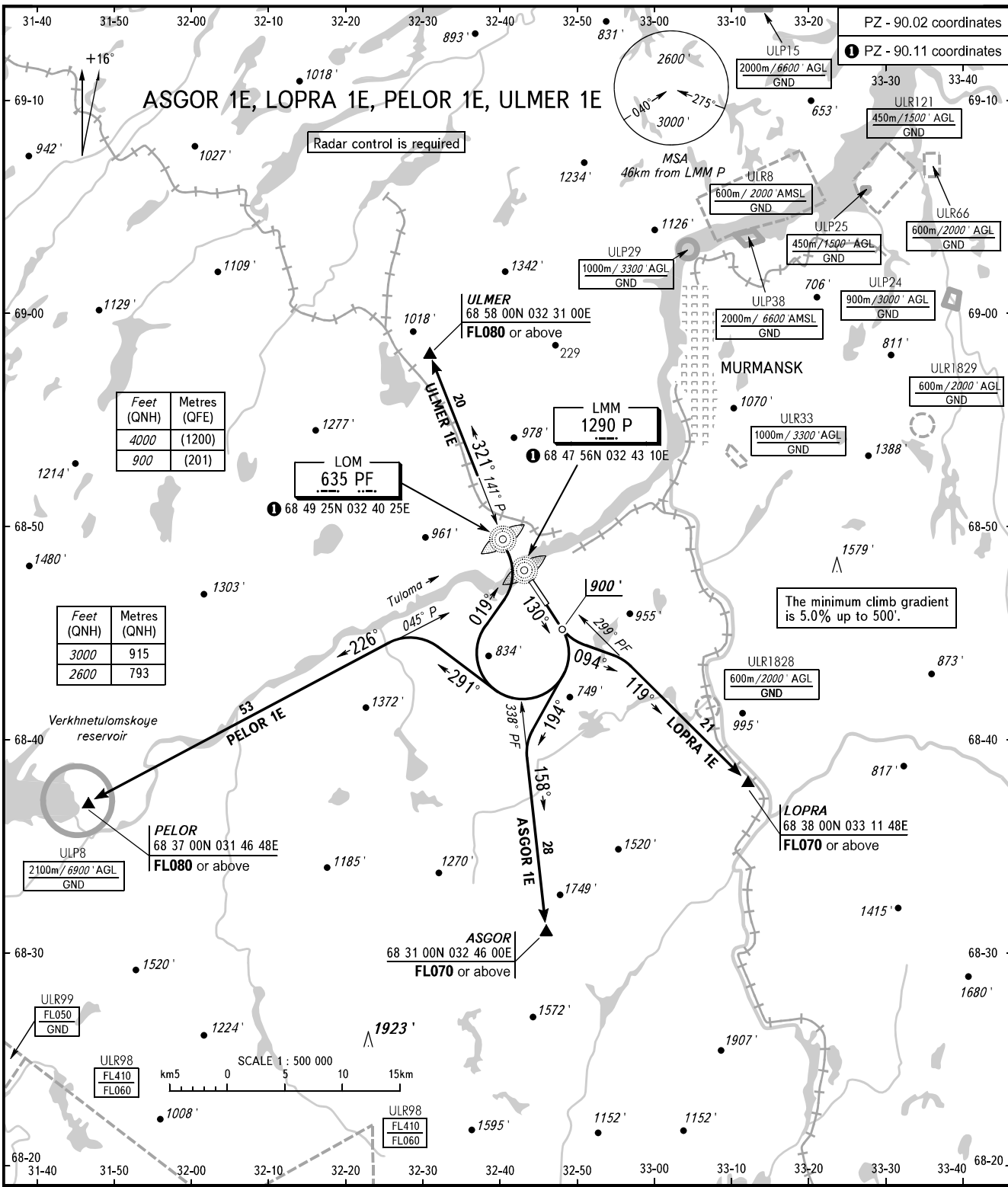


STANDARD DEPARTURE CHART
INSTRUMENT (SID) - ICAO

MURMANSK, RUSSIA
MURMANSK
RWY 13

TRANSITION
ALTITUDE: **4000'**



Feet (QNH)	Metres (QFE)
4000	(1200)
900	(201)

Feet (QNH)	Metres (QNH)
3000	915
2600	793

WARNING:

- The minimum climb gradients are as follows:
 - PELOR 1E, ULMER 1E - 5.0% up to FL080;
 - LOPRA 1E - 9.5% up to FL070;
 - ASGOR 1E - 6.8% up to FL070.
- If unable to maintain minimum climb gradient the flight crew shall advise ATS unit.
- There are close-in obstacles with MAX ELEV (60').

BEARINGS AND TRACKS ARE MAGNETIC
ALTITUDES AND ELEVATIONS IN FEET
DISTANCES IN KILOMETRES

Alt set: -QNH(QFE on req);
-hPa(mm on req).