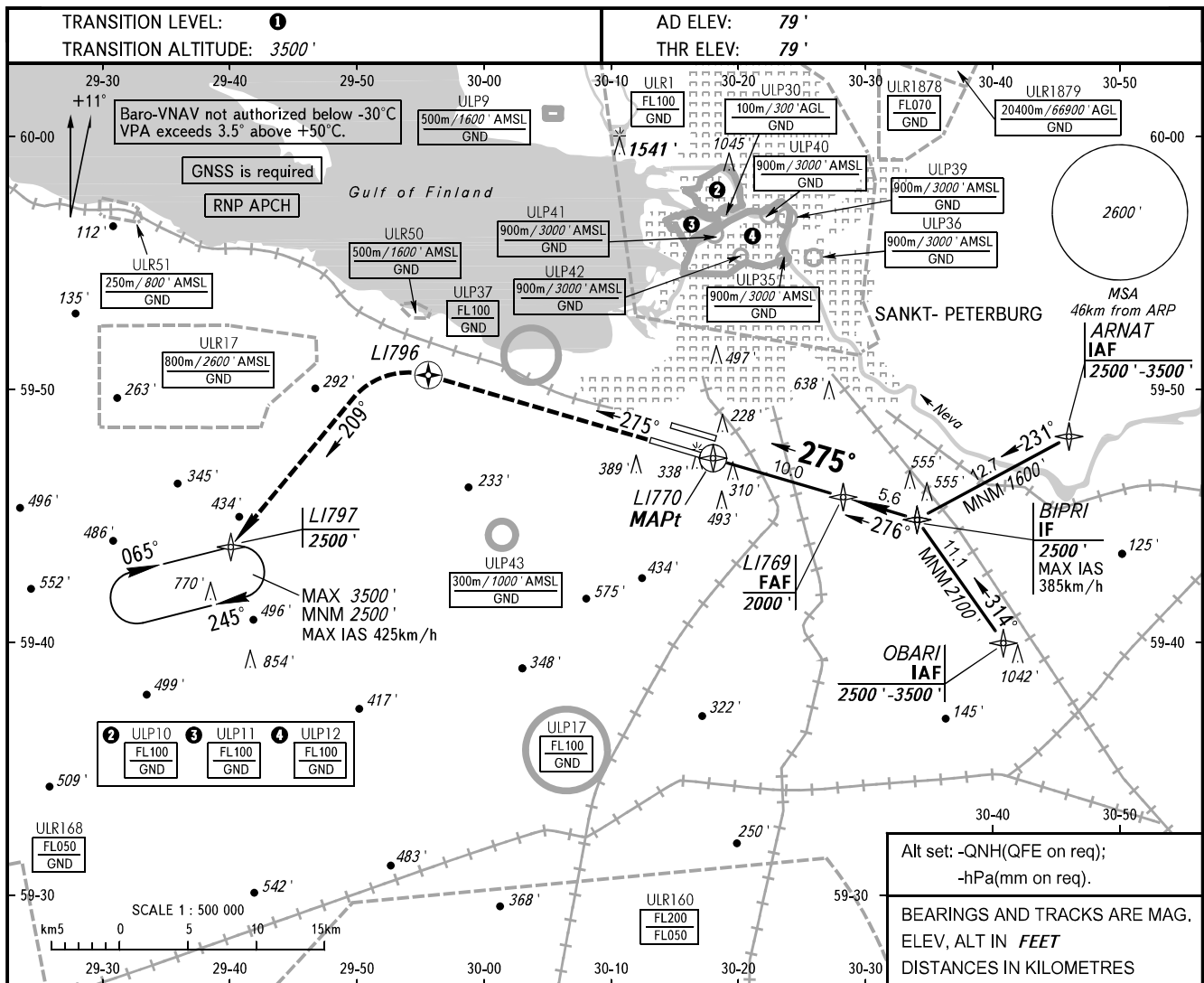


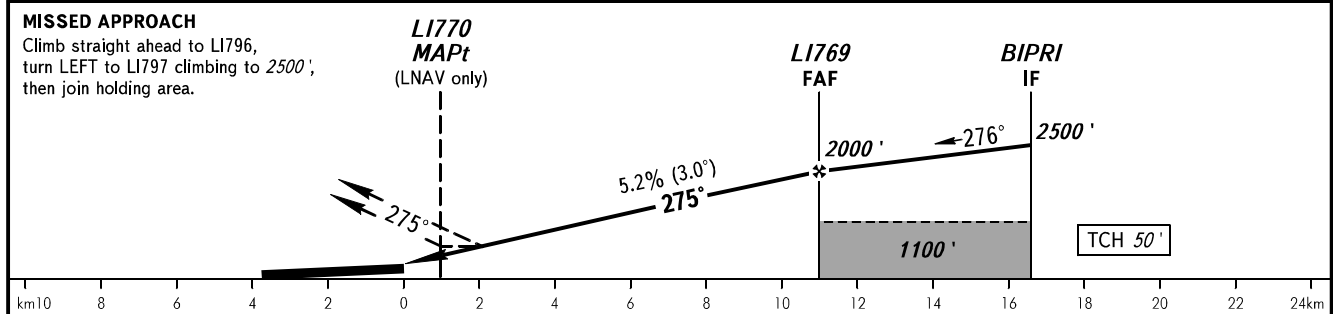
**INSTRUMENT
APPROACH
CHART - ICAO**

RADAR	120.300
TOWER	118.700

**SANKT-PETERBURG, RUSSIA
PULKOVO
RNP Z RWY 28L**



DIST to LI770	2.0	4.0	6.0	8.0
ALTITUDE	642'	986'	1330'	1674'



OCA(H)		A	B	C	D	① TRANSITION LEVEL:						
Straight-in Approach	LNAV	560' (480')	560' (480')	560' (480')	560' (480')	- FL050 when QNH is 995.9 hPa (747mm mercury column) or above;						
	LNAV/VNAV	470' (400')	480' (410')	490' (420')	500' (420')	- FL060 when QNH is 959.9 hPa (720mm mercury column) or above, but less than 995.9 hPa (747mm mercury column);						
Circling		690' (610')	790' (710')	900' (820')	1040' (960')	- FL070 when QNH is less than 959.9 hPa (720mm mercury column).						
NOTE Level flight segment is not AVBL before FAF.												
GROUND SPEED	km/h	150	180	210	240	270	300	330	360	390	420	450
RATE OF DESCENT	m/s	2.2	2.6	3.0	3.5	3.9	4.3	4.8	5.2	5.6	6.1	6.5
	ft/min	430	516	602	688	774	860	946	1032	1118	1204	1290