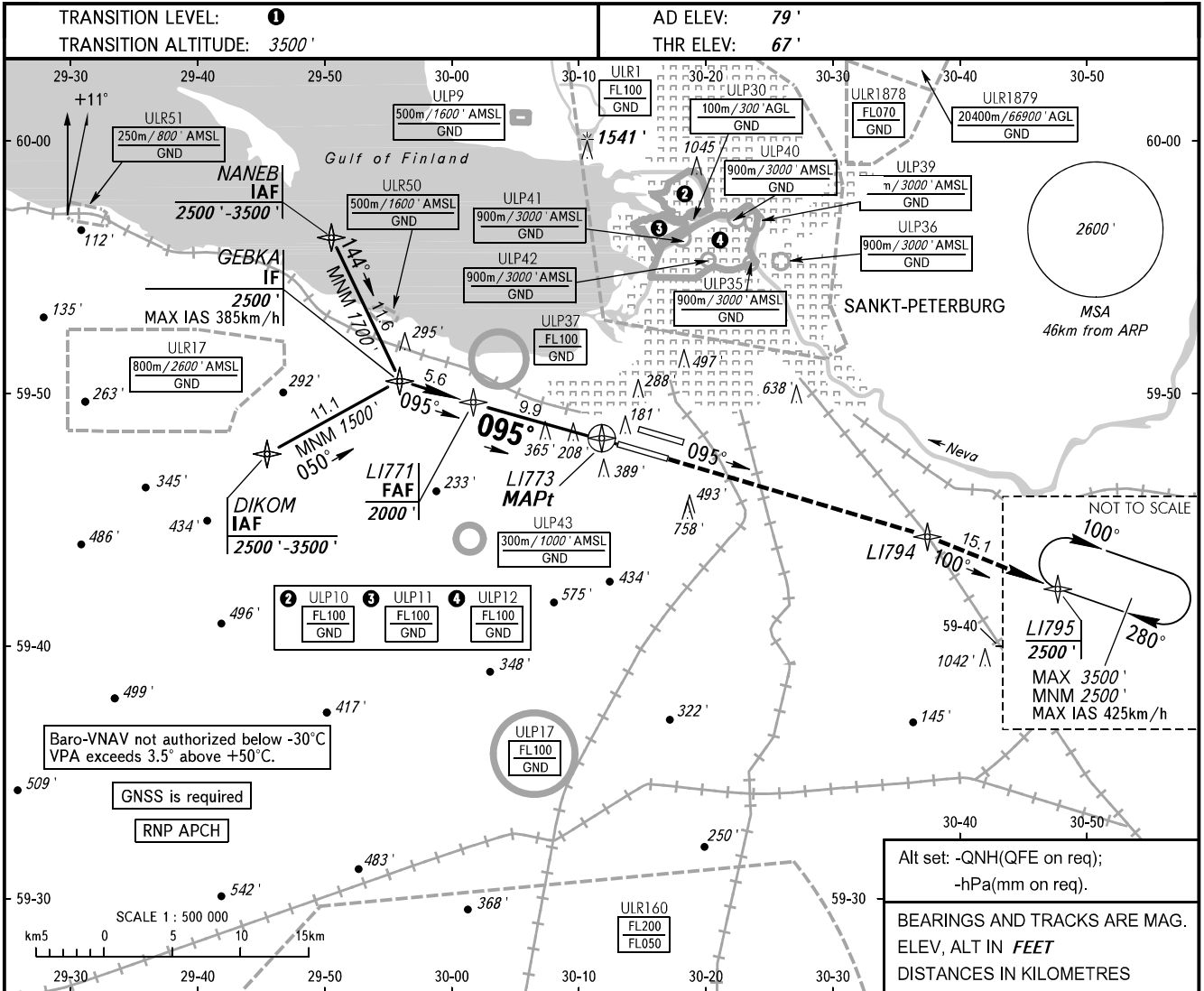


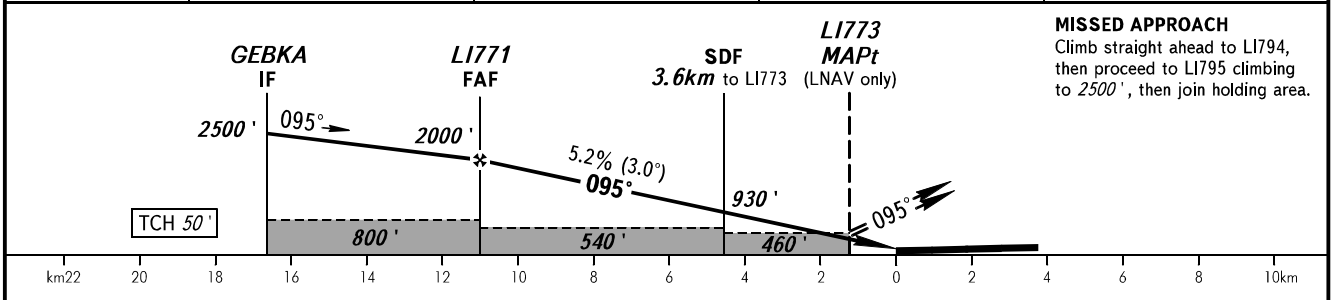
**INSTRUMENT
APPROACH
CHART - ICAO**

RADAR	120.300
TOWER	118.700

**SANKT-PETERBURG, RUSSIA
PULKOVO
RNP Z RWY 10R**



DIST to LI773	8.0	6.0	4.0	2.0
ALTITUDE	1696'	1352'	1008'	664'



OCA(H)		A	B	C	D
Straight-in Approach	LNAV	460' (390')	460' (390')	460' (390')	460' (390')
	LNAV/VNAV	320' (250')	330' (260')	340' (270')	350' (280')
Circling		690' (610')	790' (710')	900' (820')	1040' (960')

1 TRANSITION LEVEL:
 - FL050 when QNH is 995.9 hPa (747mm mercury column) or above;
 - FL060 when QNH is 959.9 hPa (720mm mercury column) or above, but less than 995.9 hPa (747mm mercury column);
 - FL070 when QNH is less than 959.9 hPa (720mm mercury column).
NOTE
 Level flight segment is not AVBL before FAF.

GROUND SPEED	km/h	150	180	210	240	270	300	330	360	390	420	450
RATE OF DESCENT	m/s	2.2	2.6	3.0	3.5	3.9	4.3	4.8	5.2	5.6	6.1	6.5
	ft/min	430	516	602	688	774	860	946	1032	1118	1204	1290

CHANGE: COM