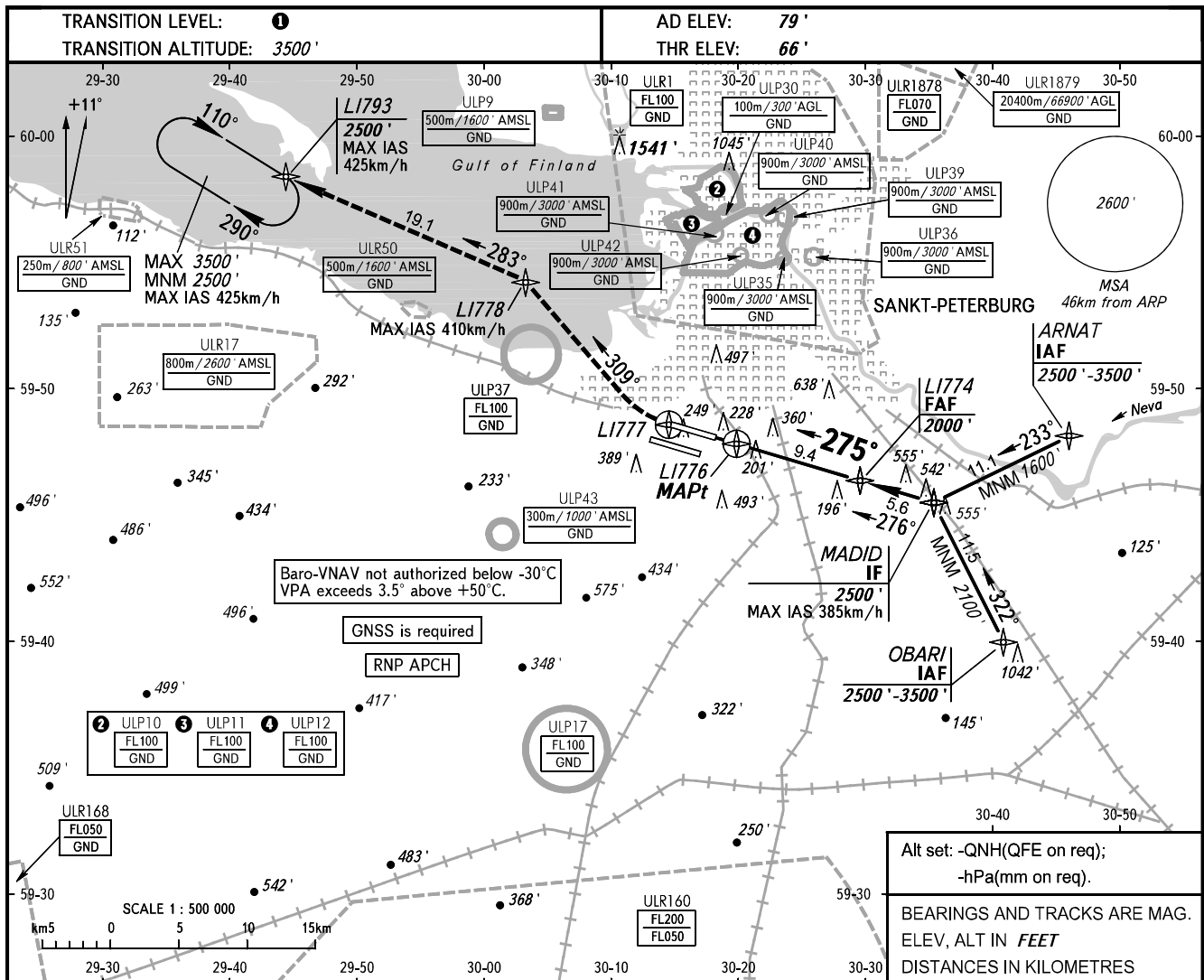


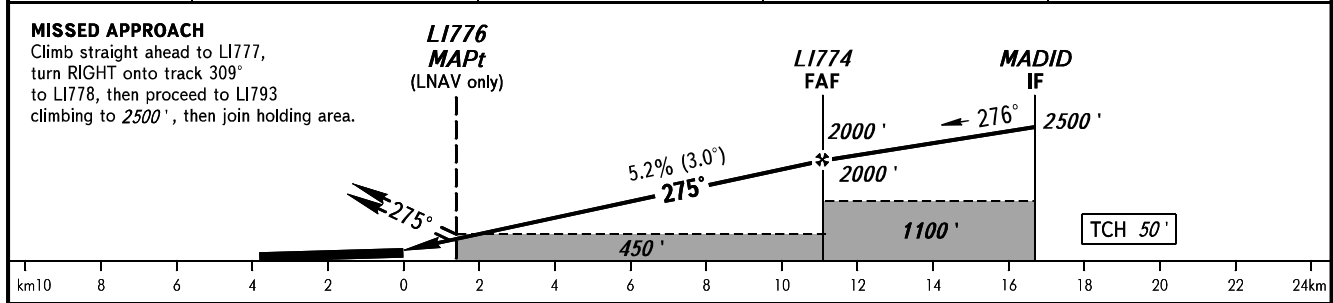
**INSTRUMENT  
APPROACH  
CHART - ICAO**

RADAR	<b>120.300</b>
TOWER	<b>118.100</b>

**SANKT-PETERBURG, RUSSIA  
PULKOVO  
RNP Z RWY 28R**



DIST to LI776	2.0	4.0	6.0	8.0
ALTITUDE	741'	1085'	1429'	1773'



OCA(H)		A	B	C	D	① TRANSITION LEVEL:							
Straight-in Approach	LNAV	450' (390')	450' (390')	450' (390')	450' (390')	- FL050 when QNH is 995.9 hPa (747mm mercury column) or above;							
	LNAV/VNAV	360' (300')	370' (310')	390' (330')	420' (350')	- FL060 when QNH is 995.9 hPa (720mm mercury column) or above, but less than 995.9 hPa (747mm mercury column);							
Circling		690' (610')	790' (710')	900' (820')	1040' (960')	- FL070 when QNH is less than 995.9 hPa (720mm mercury column).							
							<b>NOTE</b> Level flight segment is not AVBL before FAF.						
GROUND SPEED		km/h	150	180	210	240	270	300	330	360	390	420	450
RATE OF DESCENT		m/s	2.2	2.6	3.0	3.5	3.9	4.3	4.8	5.2	5.6	6.1	6.5
		ft/min	430	516	602	688	774	860	946	1032	1118	1204	1290