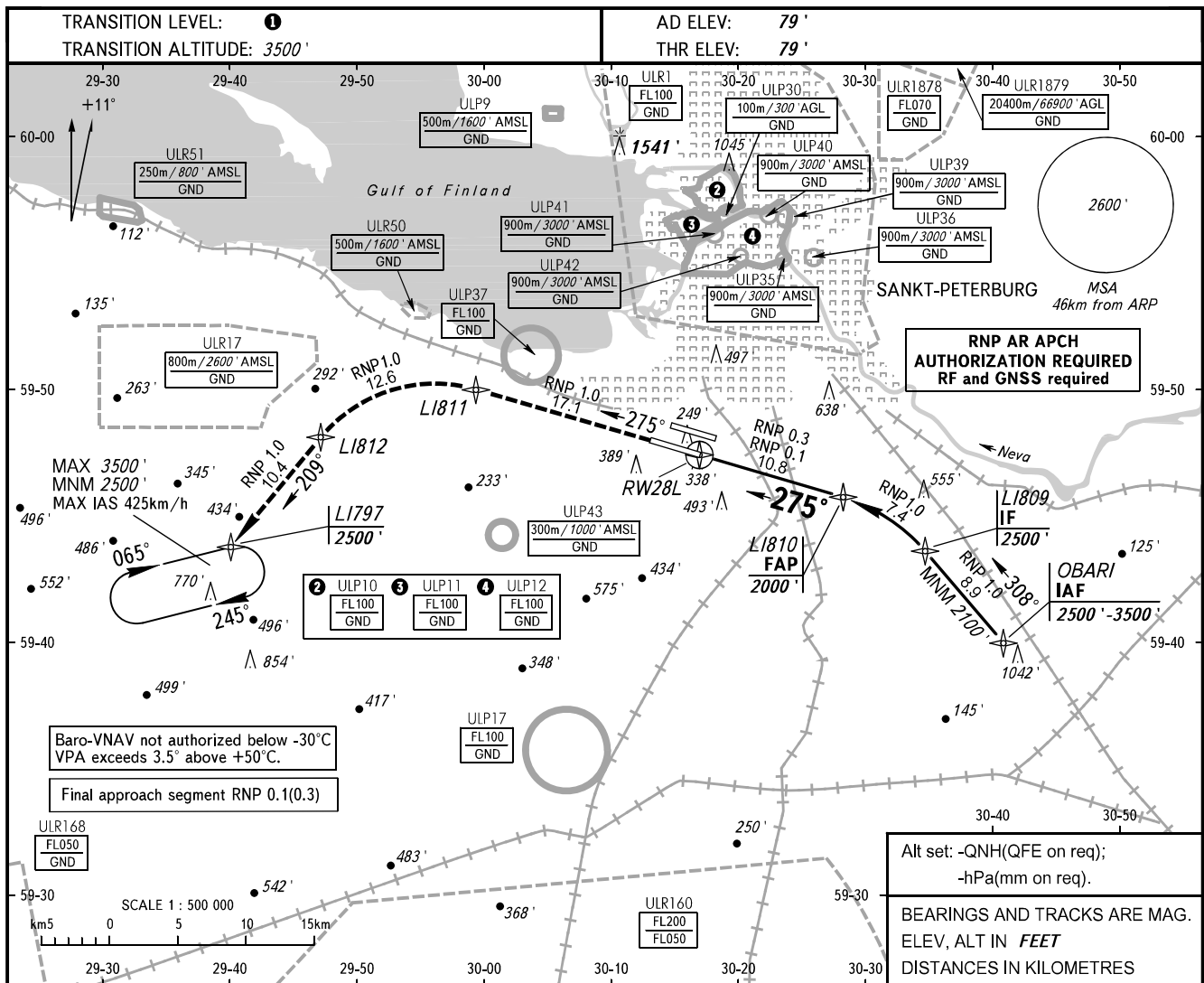


**INSTRUMENT
APPROACH
CHART - ICAO**

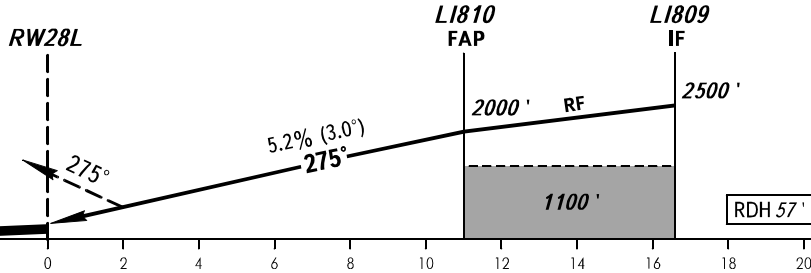
RADAR **120.300**
TOWER **118.700**

SANKT-PETERBURG, RUSSIA
PULKOVO
RNP Y RWY 28L (AR)



MISSED APPROACH

Climb straight ahead to LI811, turn LEFT to LI812, then proceed to LI797 climbing to 2500', then join holding area.



OCA(H)		A	B	C	D								
Straight-in Approach	RNP (0.3)	470' (390')	480' (410')	490' (410')	500' (420')								
	RNP (0.1)	390' (310')	400' (320')	410' (330')	420' (340')								
Circling		690' (610')	790' (710')	900' (820')	1040' (960')								
GROUND SPEED		km/h	150	180	210	240	270	300	330	360	390	420	450
RATE OF DESCENT		m/s	2.2	2.6	3.0	3.5	3.9	4.3	4.8	5.2	5.6	6.1	6.5
		ft/min	430	516	602	688	774	860	946	1032	1118	1204	1290

1 TRANSITION LEVEL:
- FL050 when QNH is 995.9 hPa (747mm mercury column) or above;
- FL060 when QNH is 959.9 hPa (720mm mercury column) or above, but less than 995.9 hPa (747mm mercury column);
- FL070 when QNH is less than 959.9 hPa (720mm mercury column).