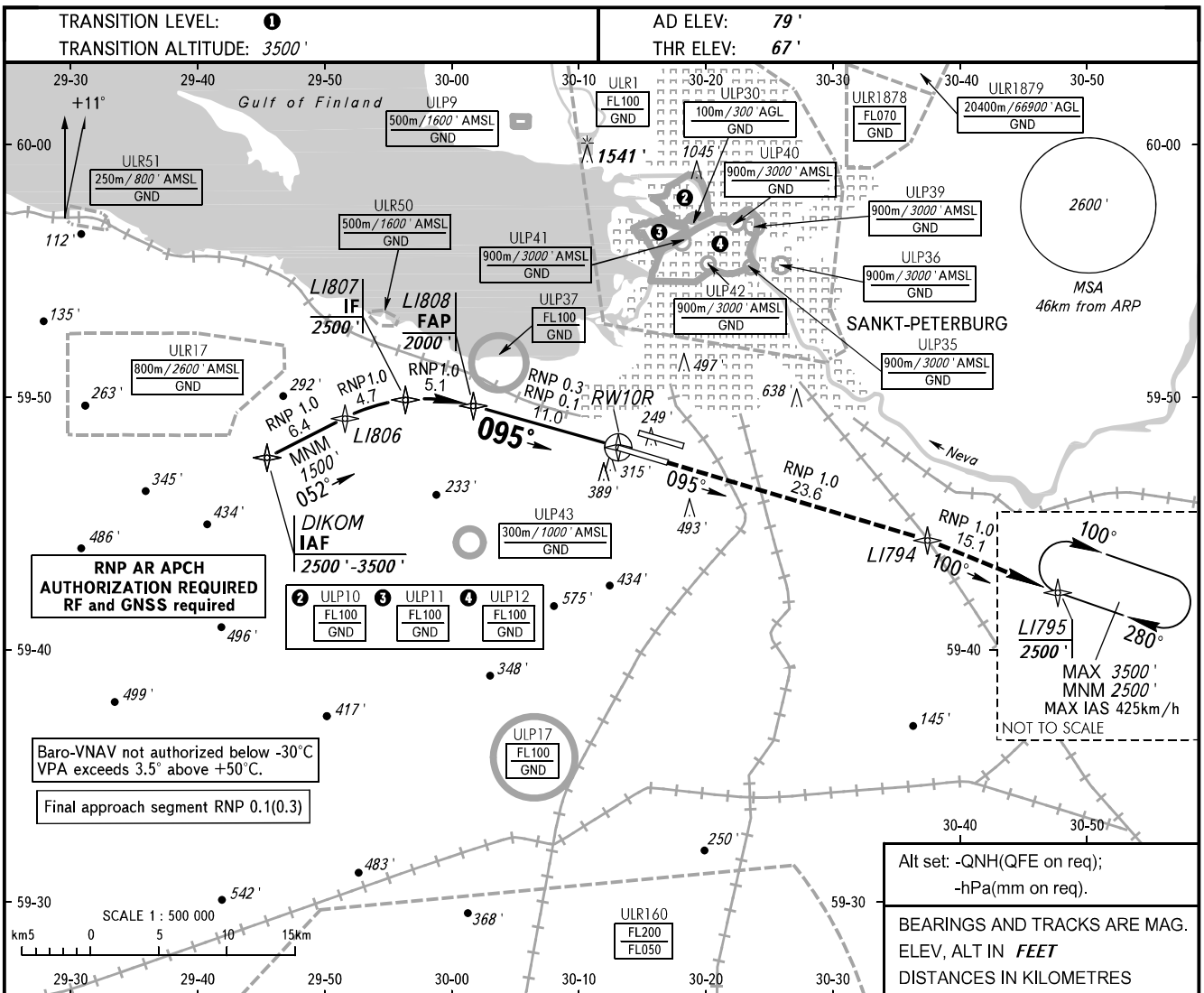


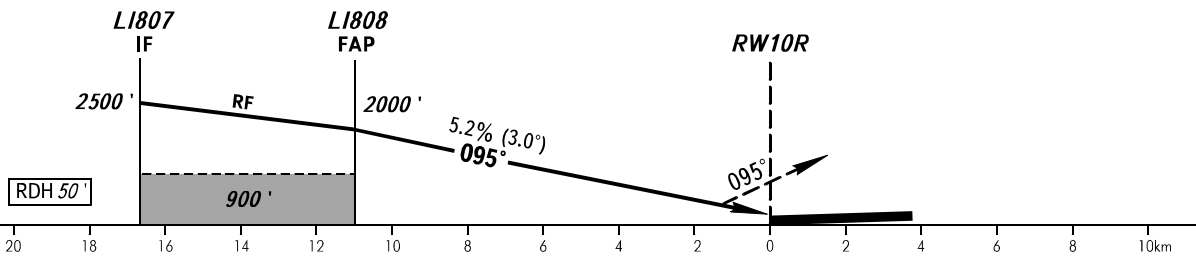
**INSTRUMENT  
APPROACH  
CHART - ICAO**

RADAR	120.300
TOWER	118.700

**SANKT-PETERBURG, RUSSIA  
PULKOVO  
RNP Y RWY 10R (AR)**



**MISSED APPROACH**  
Climb straight ahead to L1794, then proceed to L1795 climbing to 2500', then join holding area.



OCA(H)		A	B	C	D								
Straight-in Approach	RNP (0.3)	350' (280')	370' (300')	390' (320')	410' (340')								
	RNP (0.1)	330' (260')	350' (280')	370' (300')	380' (320')								
Circling		690' (610')	790' (710')	900' (820')	1040' (960')								
GROUND SPEED		km/h	150	180	210	240	270	300	330	360	390	420	450
RATE OF DESCENT		m/s	2.2	2.6	3.0	3.5	3.9	4.3	4.8	5.2	5.6	6.1	6.5
		ft/min	430	516	602	688	774	860	946	1032	1118	1204	1290

**1 TRANSITION LEVEL:**  
 - FL050 when QNH is 995.9 hPa (747mm mercury column) or above;  
 - FL060 when QNH is 959.9 hPa (720mm mercury column) or above, but less than 995.9 hPa (747mm mercury column);  
 - FL070 when QNH is less than 959.9 hPa (720mm mercury column).

CHANGE: COM, OCA(H)