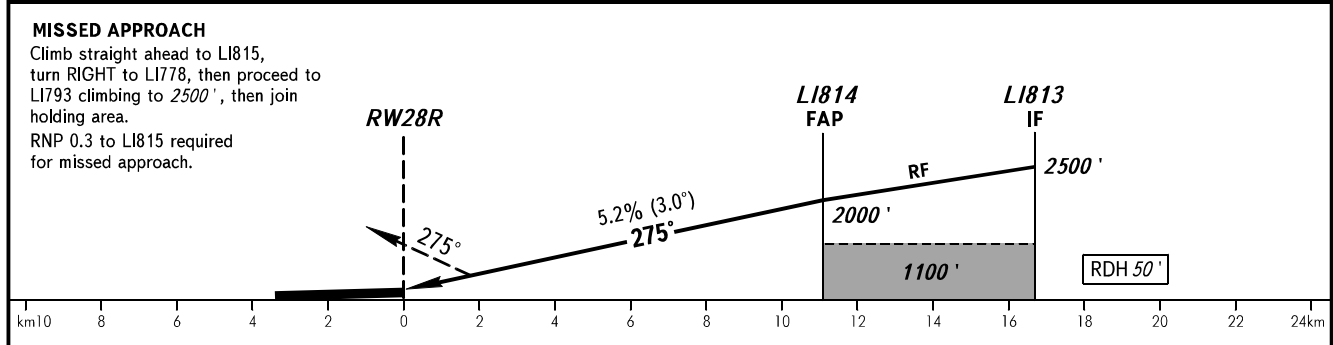
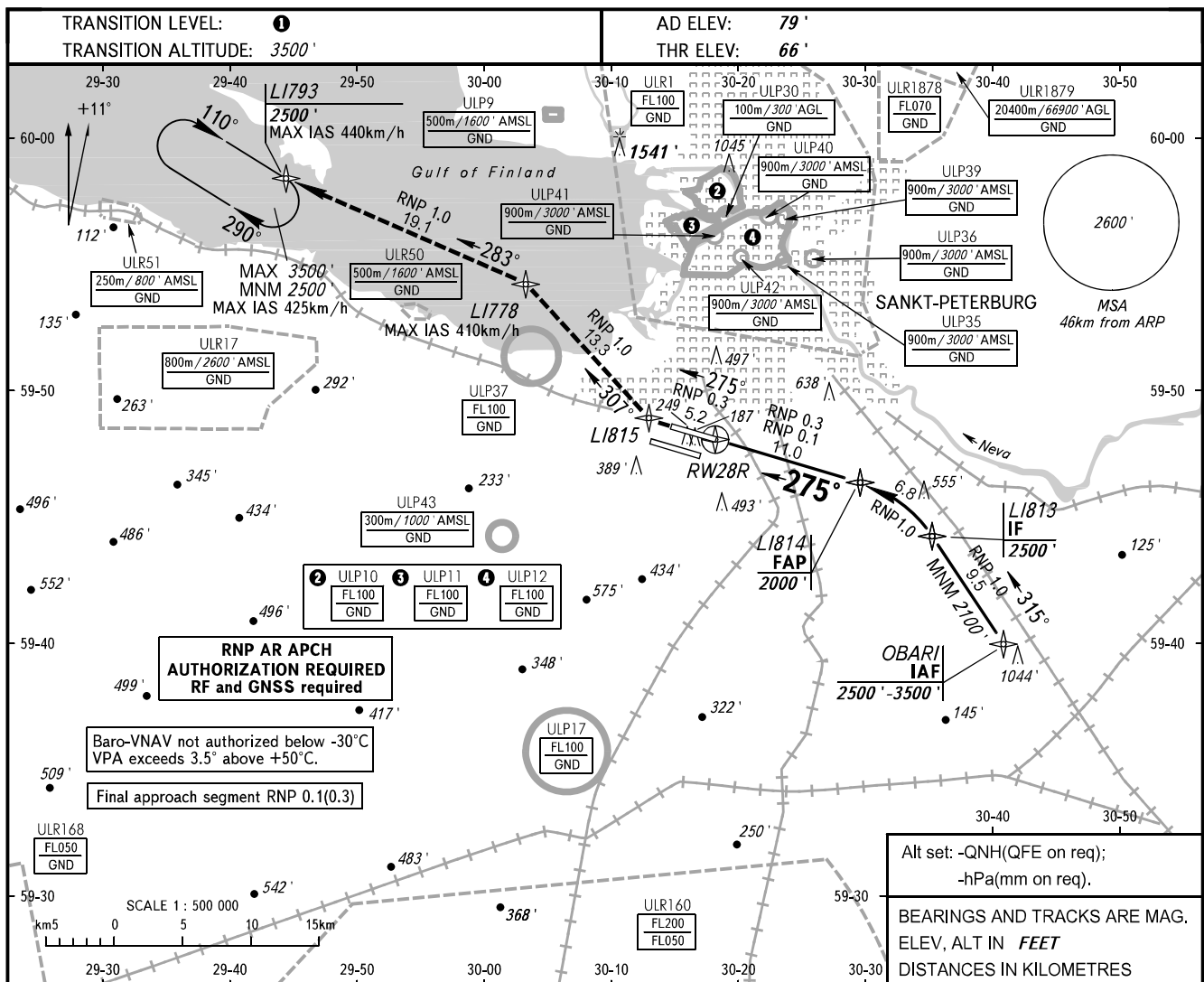


**INSTRUMENT
APPROACH
CHART - ICAO**

RADAR **120.300**
TOWER **118.100**

**SANKT-PETERBURG, RUSSIA
PULKOVO
RNP Y RWY 28R (AR)**



DA(H)		A	B	C	D	① TRANSITION LEVEL:										
Straight-in Approach	RNP (0.3)	390' (330')	410' (350')	430' (370')	450' (390')	- FL050 when QNH is 995.9 hPa (747mm mercury column) or above;										
	RNP (0.1)	370' (310')	400' (330')	410' (350')	430' (360')	- FL060 when QNH is 959.9 hPa (720mm mercury column) or above, but less than 995.9 hPa (747mm mercury column);										
Circling		690' (610')	790' (710')	900' (820')	1040' (960')	- FL070 when QNH is less than 959.9 hPa (720mm mercury column).										
						NOTE Transition to missed approach RNP for lateral guidance must not be initiated prior to the along-track position of the DA(H).										
GROUND SPEED		km/h	150	180	210	240	270	300	330	360	390	420	450			
RATE OF DESCENT		m/s	2.2	2.6	3.0	3.5	3.9	4.3	4.8	5.2	5.6	6.1	6.5			
		ft/min	430	516	602	688	774	860	946	1032	1118	1204	1290			