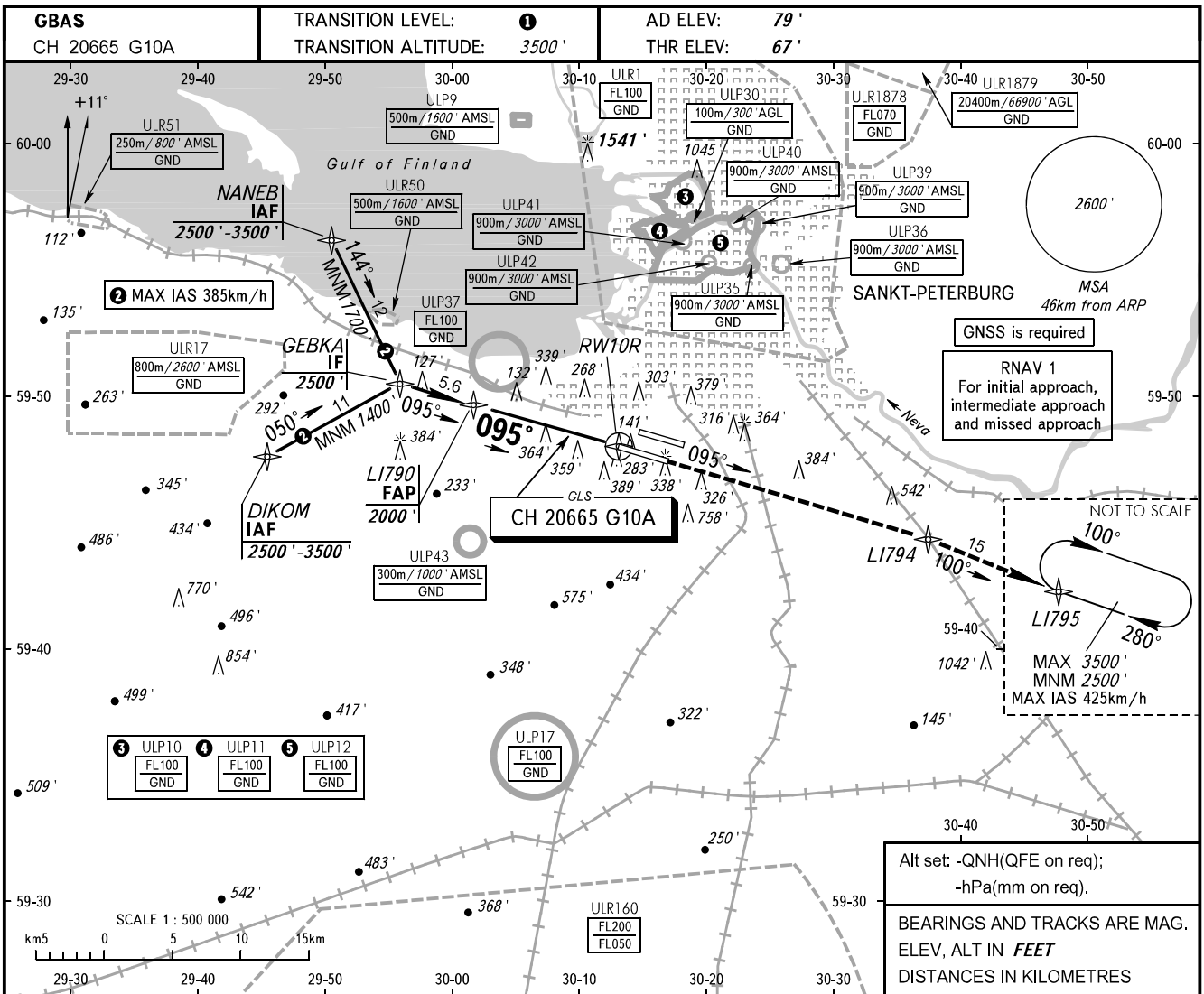


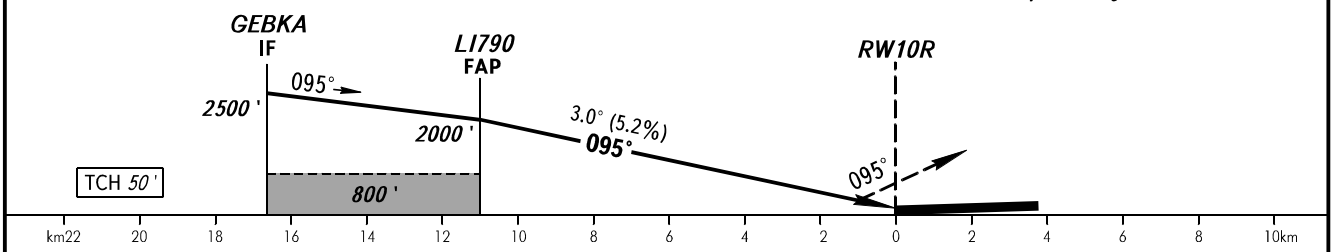
**INSTRUMENT
APPROACH
CHART - ICAO**

| | |
|-------|---------|
| RADAR | 120.300 |
| TOWER | 118.700 |

**SANKT-PETERBURG, RUSSIA
PULKOVO
GLS RWY 10R**



MISSED APPROACH
Climb straight ahead to L1794, then proceed to L1795 climbing to 2500', then join holding area.



| OCA(H) | A | B | C | D | | | | | | | | |
|----------------------|-------------|-------------|-------------|--------------|-----|-----|-----|-----|------|------|------|------|
| Straight-in Approach | 208' (142') | 218' (152') | 228' (162') | 241' (175') | | | | | | | | |
| Circling | 690' (610') | 790' (710') | 900' (820') | 1040' (960') | | | | | | | | |
| GROUND SPEED | km/h | 150 | 180 | 210 | 240 | 270 | 300 | 330 | 360 | 390 | 420 | 450 |
| RATE OF DESCENT | m/s | 2.2 | 2.6 | 3.0 | 3.5 | 3.9 | 4.3 | 4.8 | 5.2 | 5.6 | 6.1 | 6.5 |
| | ft/min | 430 | 516 | 602 | 688 | 774 | 860 | 946 | 1032 | 1118 | 1204 | 1290 |

1 TRANSITION LEVEL:
- FL050 when QNH is 995.9 hPa (747mm mercury column) or above;
- FL060 when QNH is 959.9 hPa (720mm mercury column) or above, but less than 995.9 hPa (747mm mercury column);
- FL070 when QNH is less than 959.9 hPa (720mm mercury column).

NOTE
Level flight segment is not AVBL before FAP.

CHANGE.COM