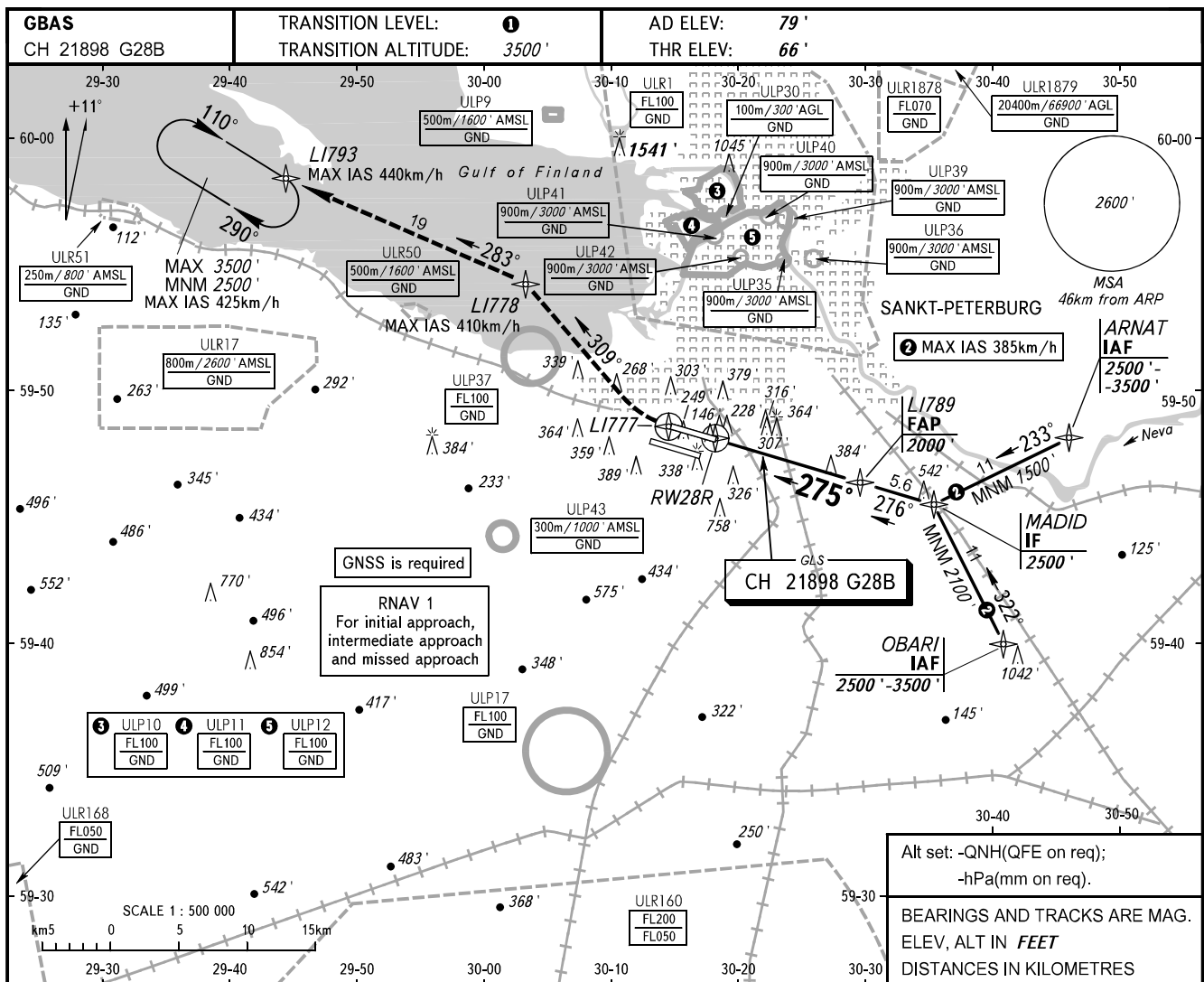


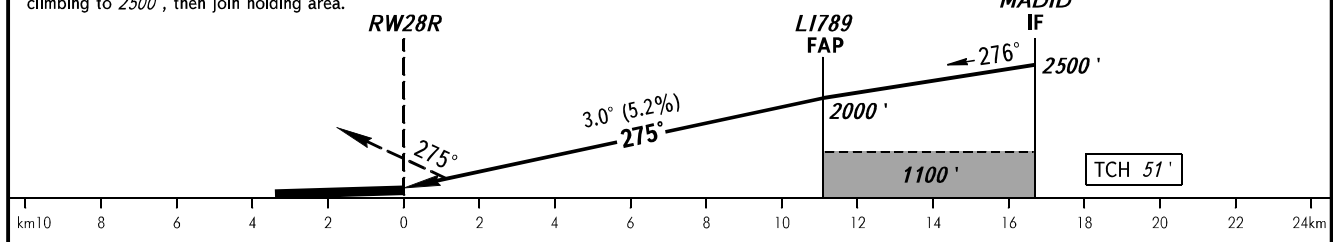
**INSTRUMENT
APPROACH
CHART - ICAO**

RADAR	120.300
TOWER	118.100

**SANKT-PETERBURG, RUSSIA
PULKOVO
GLS RWY 28R**



MISSED APPROACH
Climb straight ahead to LI777, turn RIGHT onto track 309° to LI778, then proceed to LI793 climbing to 2500', then join holding area.



OCA(H)	MNM climb gradient	A	B	C	D	1 TRANSITION LEVEL: - FL050 when QNH is 995.9 hPa (747mm mercury column) or above; - FL060 when QNH is 959.9 hPa (720mm mercury column) or above, but less than 995.9 hPa (747mm mercury column); - FL070 when QNH is less than 959.9 hPa (720mm mercury column). NOTE Level flight segment is not AVBL before FAP.						
Straight-in	2.5%	355' (289')	367' (301')	375' (309')	386' (320')							
Approach	5.0%	259' (193')	271' (205')	279' (213')	290' (224')							
Circling		690' (610')	790' (710')	900' (820')	1040' (960')							
GROUND SPEED	km/h	150	180	210	240	270	300	330	360	390	420	450
RATE OF DESCENT	m/s	2.2	2.6	3.0	3.5	3.9	4.3	4.8	5.2	5.6	6.1	6.5
	ft/min	430	516	602	688	774	860	946	1032	1118	1204	1290