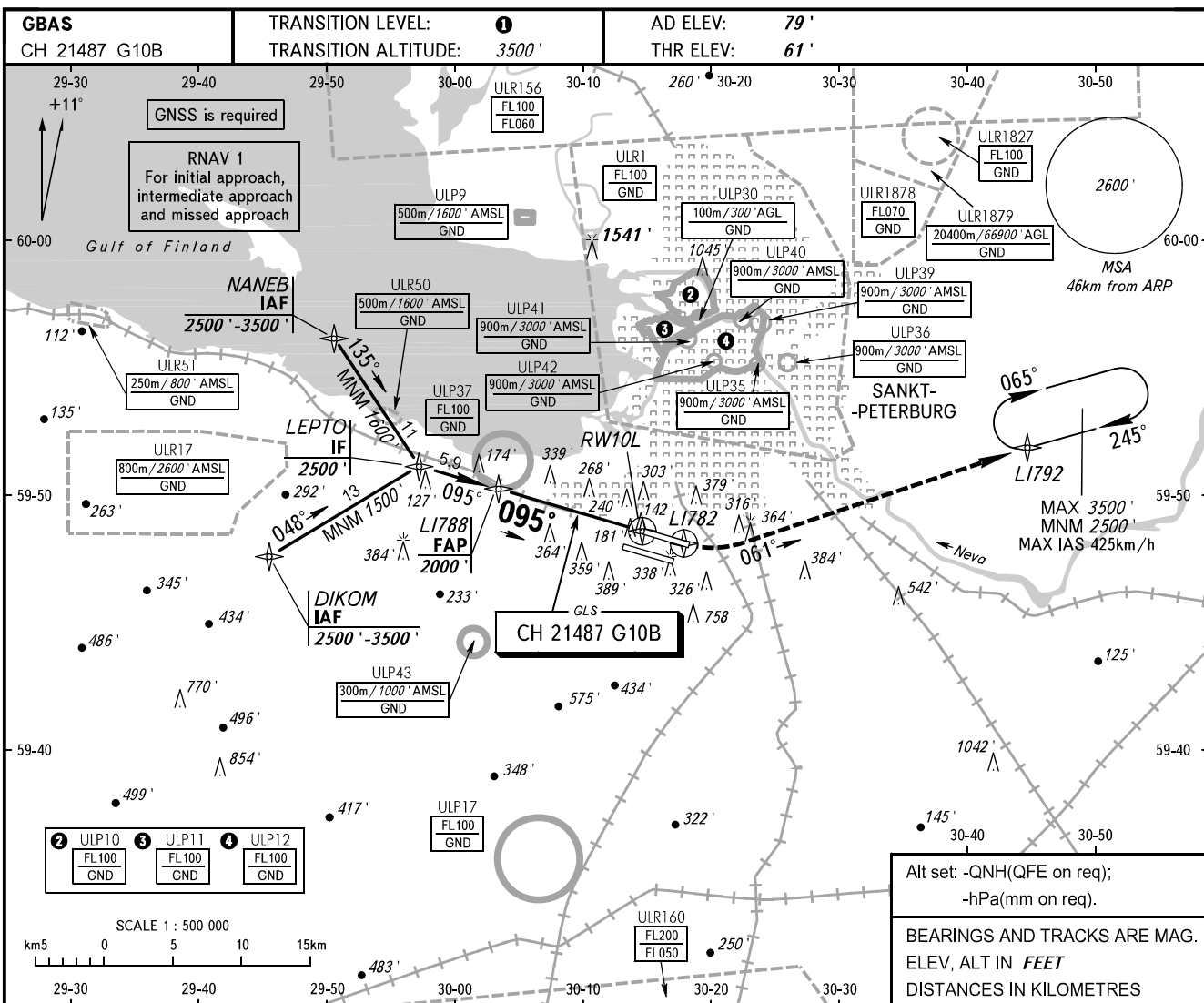


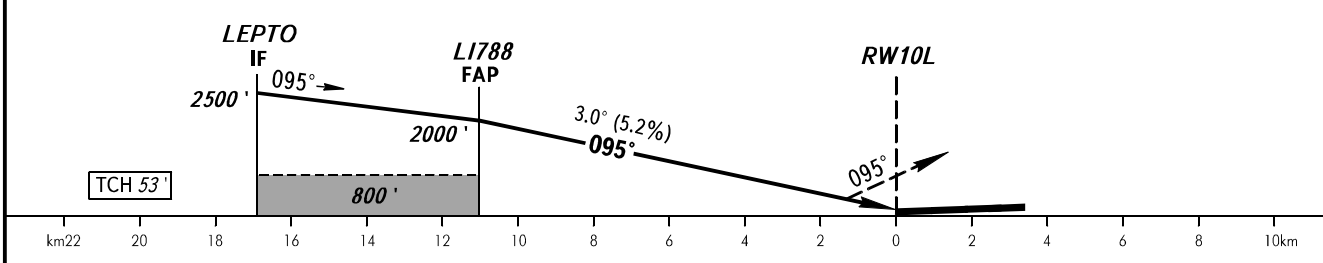
**INSTRUMENT
APPROACH
CHART - ICAO**

RADAR **120.300**
TOWER **118.100**

SANKT-PETERBURG, RUSSIA
PULKOVO
GLS RWY 10L



MISSED APPROACH
Climb straight ahead to LI782, turn LEFT onto track 061° to LI792 climbing to 2500'; then join holding area.



OCA(H)		A	B	C	D	① TRANSITION LEVEL:							
Straight-in Approach	MNM climb gradient	2.5%	332' (271')	344' (283')	352' (291')	363' (302')	- FL050 when QNH is 995.9 hPa (747mm mercury column) or above;						
		4.0%	287' (226')	299' (238')	307' (246')	318' (257')	- FL060 when QNH is 959.9 hPa (720mm mercury column) or above, but less than 995.9 hPa (747mm mercury column);						
Circling			690' (610')	790' (710')	900' (820')	1040' (960')	- FL070 when QNH is less than 959.9 hPa (720mm mercury column).						
GROUND SPEED		km/h	150	180	210	240	270	300	330	360	390	420	450
RATE OF DESCENT		m/s	2.2	2.6	3.0	3.5	3.9	4.3	4.8	5.2	5.6	6.1	6.5
		ft/min	430	516	602	688	774	860	946	1032	1118	1204	1290

CHANGE.COM