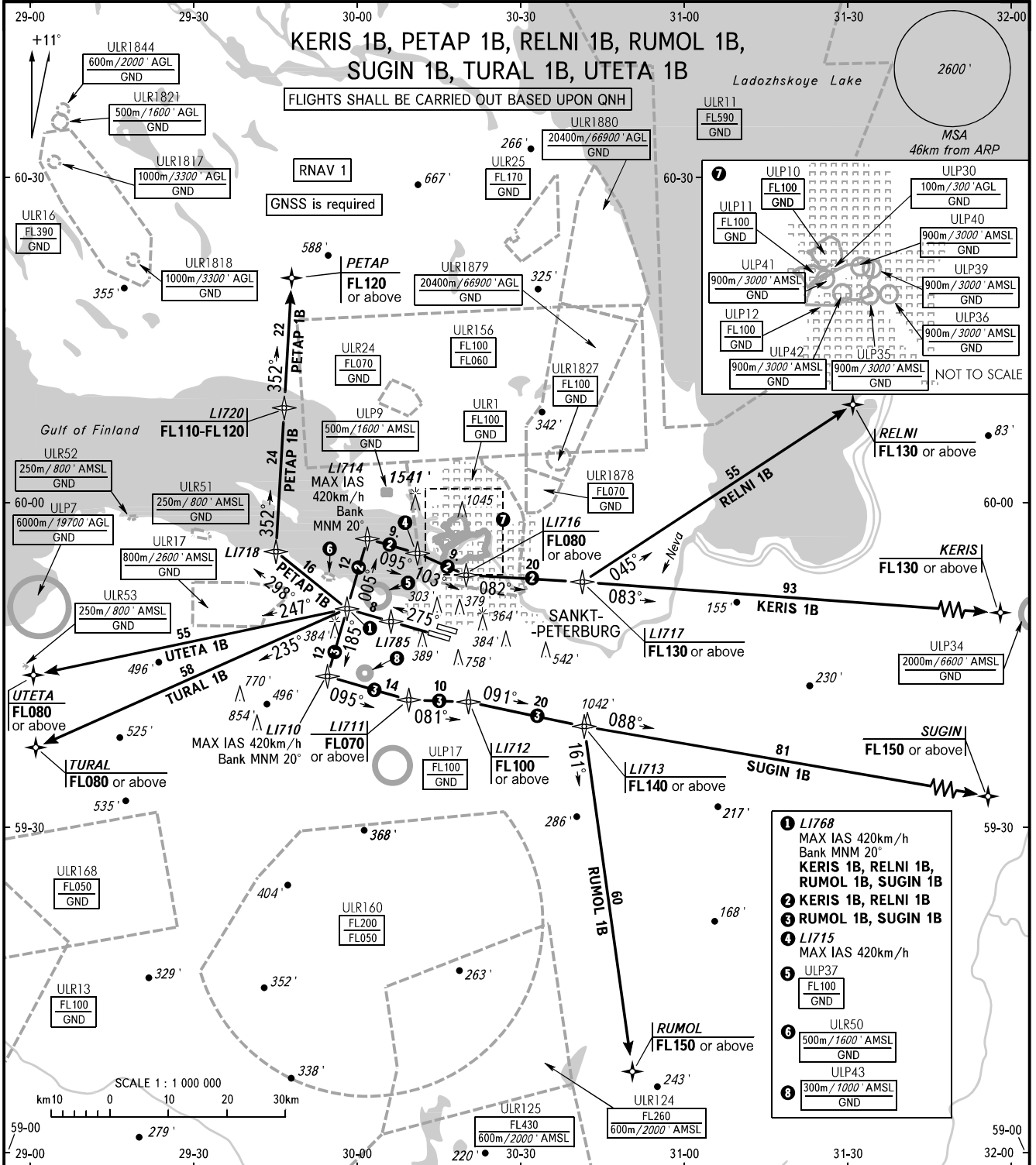


STANDARD DEPARTURE CHART
INSTRUMENT (SID) - ICAO

TRANSITION
ALTITUDE : 3500'

SANKT-PETERBURG, RUSSIA
PULKOVO
RNAV RWY 28L



TOWER	118.700
RADAR	120.300
APPROACH Sector 1 (EAST)	H24 119.300
Sector 2 (WEST)	0600-1600 125.200
Sector 2 (WEST)	1600-0600 119.300

WARNING

The minimum climb gradients are as follows (required due to the airspace structure only):
 - 6.4% for SID KERIS 1B, RELNI 1B up to FL130;
 - 6.4% for SID SUGIN 1B, RUMOL 1B up to FL120;
 - 6.2% for SID PETAP 1B up to FL110.

BEARINGS AND TRACKS ARE MAGNETIC
ALTITUDES AND ELEVATIONS IN FEET
DISTANCES IN KILOMETRES