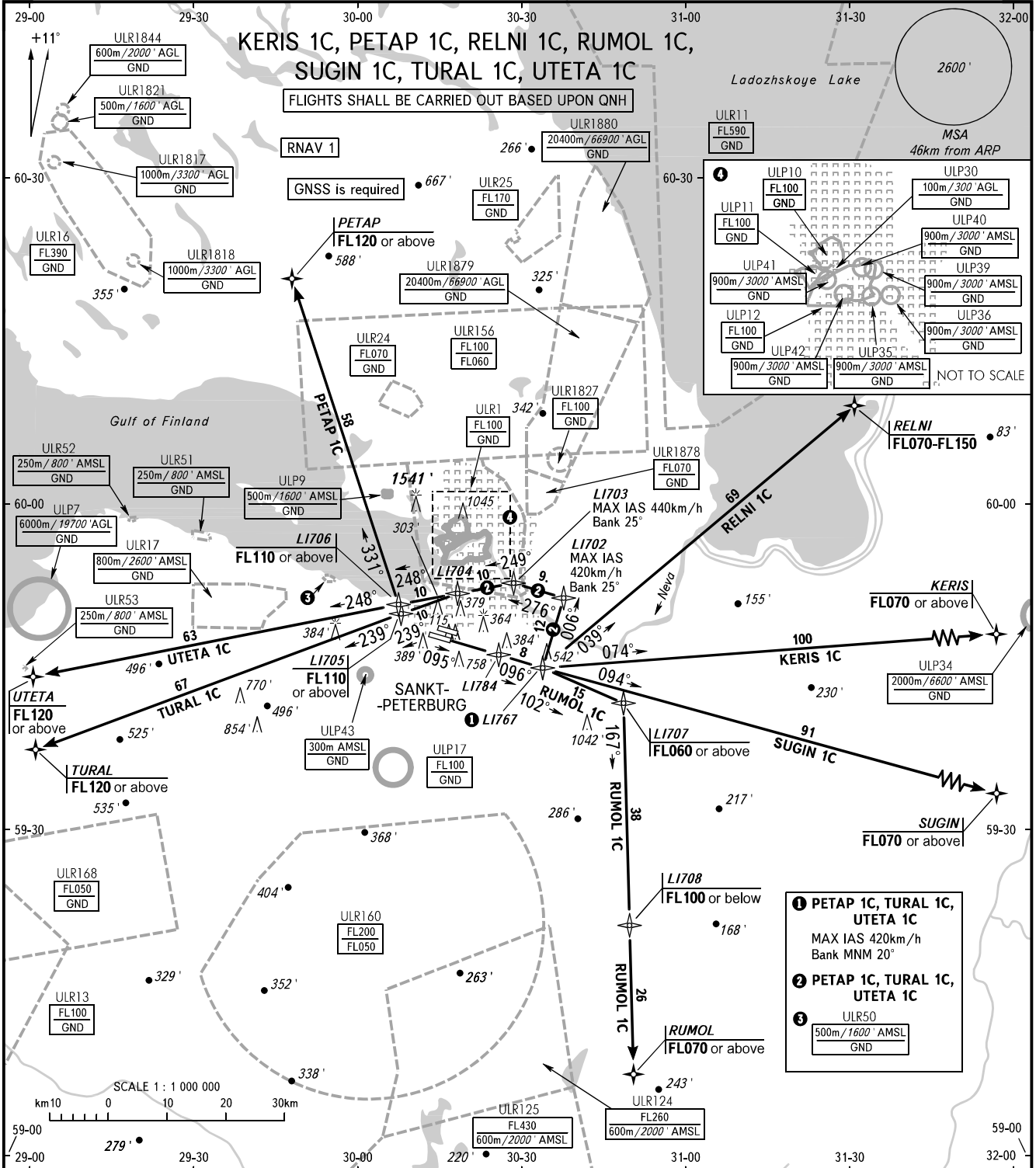


STANDARD DEPARTURE CHART
INSTRUMENT (SID) - ICAO

TRANSITION
ALTITUDE : 3500'

SANKT-PETERBURG, RUSSIA
PULKOVO
RNAV RWY 10R



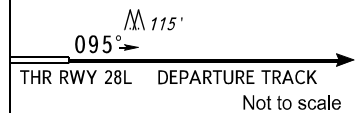
TOWER	118.700
RADAR	120.300
APPROACH Sector 1 (EAST)	H24 119.300
Sector 2 (WEST)	0600-1600 125.200
Sector 2 (WEST)	1600-0600 119.300

WARNING

The minimum climb gradients are as follows (required due to the airspace structure only):

- 6.4% for SID PETAP 1C, TURAL 1C, UTETA 1C up to FL110;
- 6.4% for SID RELNI 1C up to 3500';
- 6.0% for SID RUMOL 1C up to FL060.

Close-in obstacle: TREES, DIST is 3984m from THR RWY 10R, ELEV 115'.



CHANGE: COM

BEARINGS AND TRACKS ARE MAGNETIC
ALTITUDES AND ELEVATIONS IN FEET
DISTANCES IN KILOMETRES