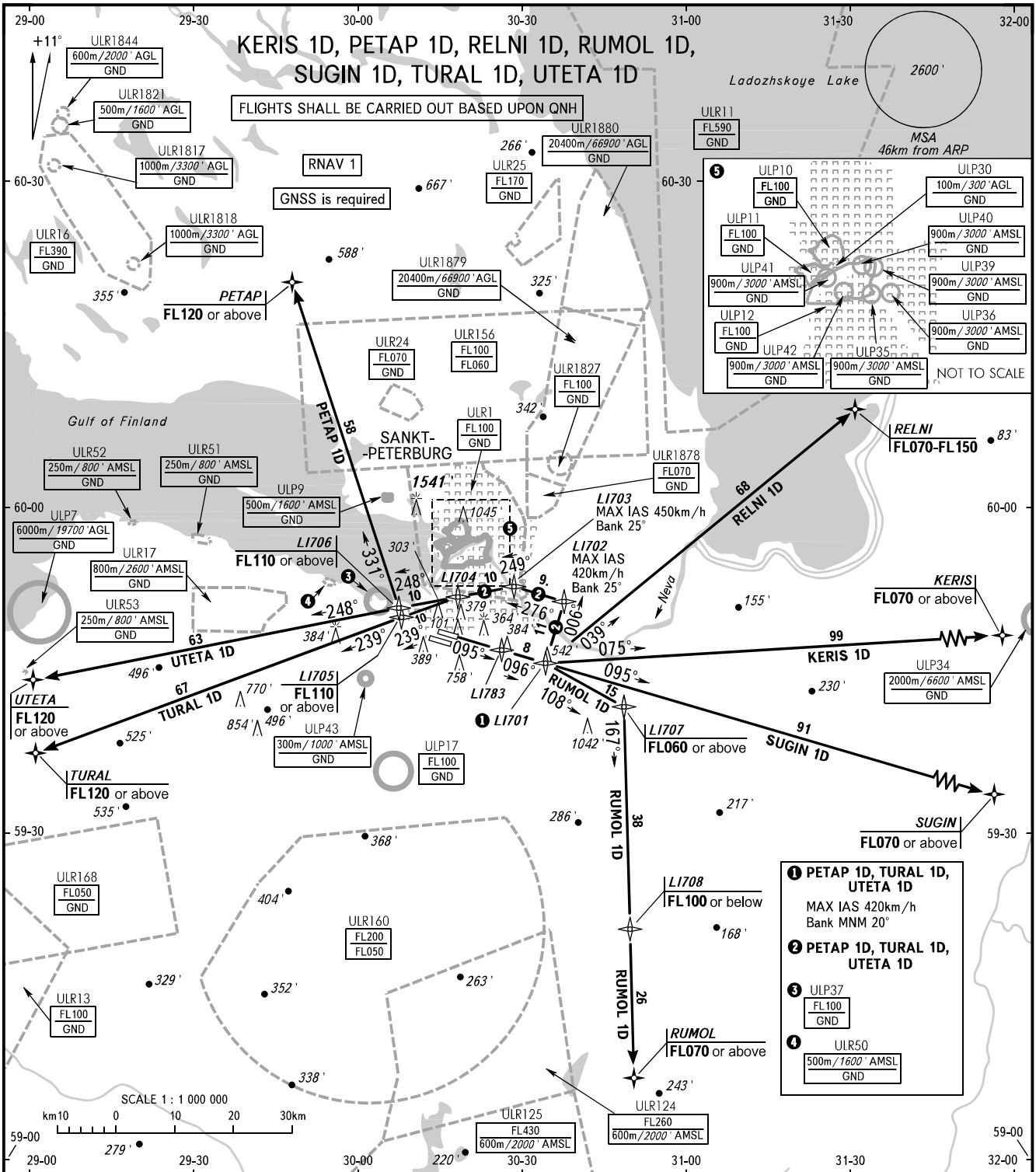


STANDARD DEPARTURE CHART
INSTRUMENT (SID) - ICAO

TRANSITION
ALTITUDE : 3500'

SANKT-PETERBURG, RUSSIA
PULKOVO
RNAV RWY 10L



TOWER	118.100
RADAR	120.300
APPROACH Sector 1 (EAST)	H24 119.300
Sector 2 (WEST)	0600-1600 125.200
Sector 2 (WEST)	1600-0600 119.300

WARNING
The minimum climb gradients are as follows (required due to the airspace structure only):
- 6.5% for SID PETAP 1D, TURAL 1D, UTETA 1D up to FL110;
- 6.0% for SID RUMOL 1D up to FL060.

