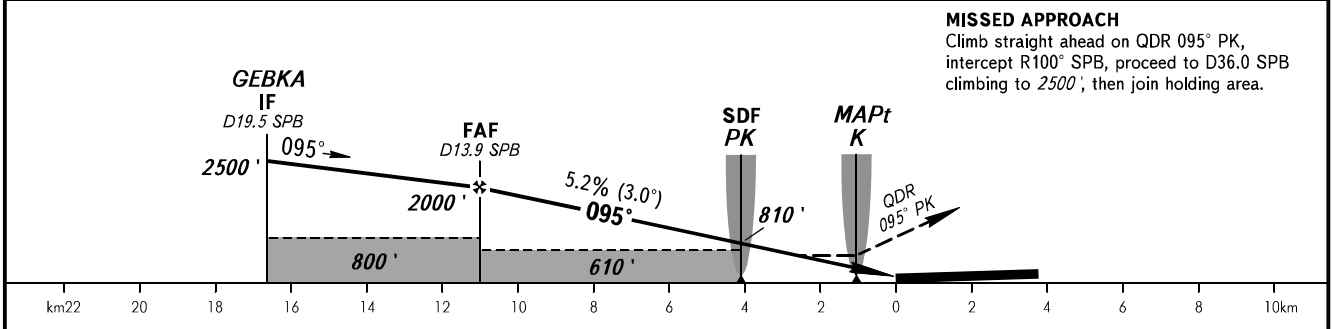
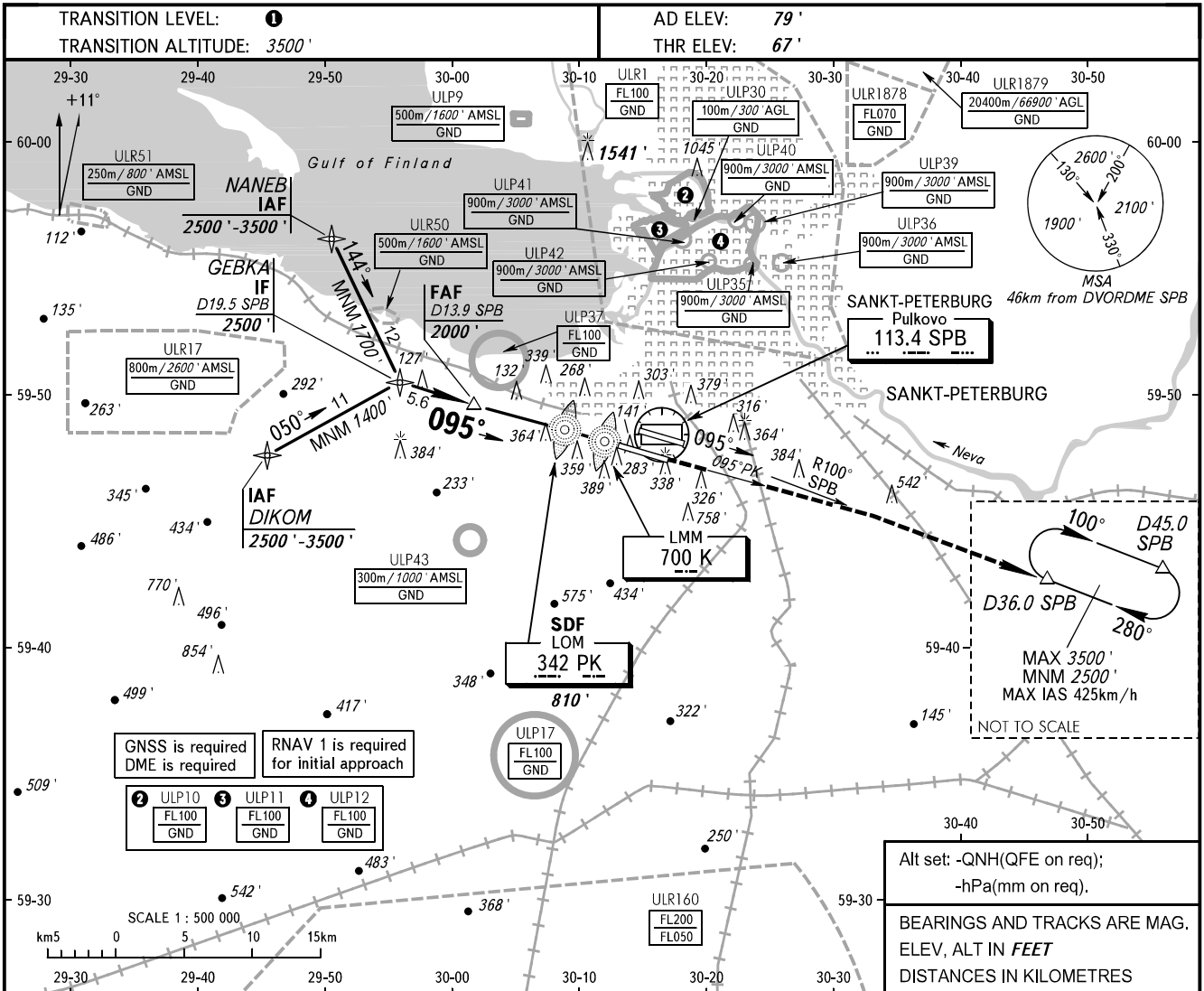


**INSTRUMENT
APPROACH
CHART - ICAO**

RADAR 120.300
TOWER 118.700

**SANKT-PETERBURG, RUSSIA
PULKOVO
NDB RWY 10R**



OCA(H)		A	B	C	D
Straight-in Approach	With SDF	540' (470')	540' (470')	540' (470')	540' (470')
	WO SDF	610' (550')	610' (550')	610' (550')	610' (550')
Circling		690' (610')	790' (710')	900' (820')	1040' (960')

1 TRANSITION LEVEL:
 - FL050 when QNH is 995.9 hPa (747mm mercury column) or above;
 - FL060 when QNH is 959.9 hPa (720mm mercury column) or above, but less than 995.9 hPa (747mm mercury column);
 - FL070 when QNH is less than 959.9 hPa (720mm mercury column).

NOTE:
 1. The length of intermediate approach is less than 9.3km.
 2. MAPt at LMM K. Timing not authorized for defining MAPt.
 3. Level flight segment is not AVBL before FAF.

GROUND SPEED	km/h	150	180	210	240	270	300	330	360	390	420	450
	RATE OF DESCENT	m/s	2.2	2.6	3.0	3.5	3.9	4.3	4.8	5.2	5.6	6.1
	ft/min	430	516	602	688	774	860	946	1032	1118	1204	1290

CHANGE: COM