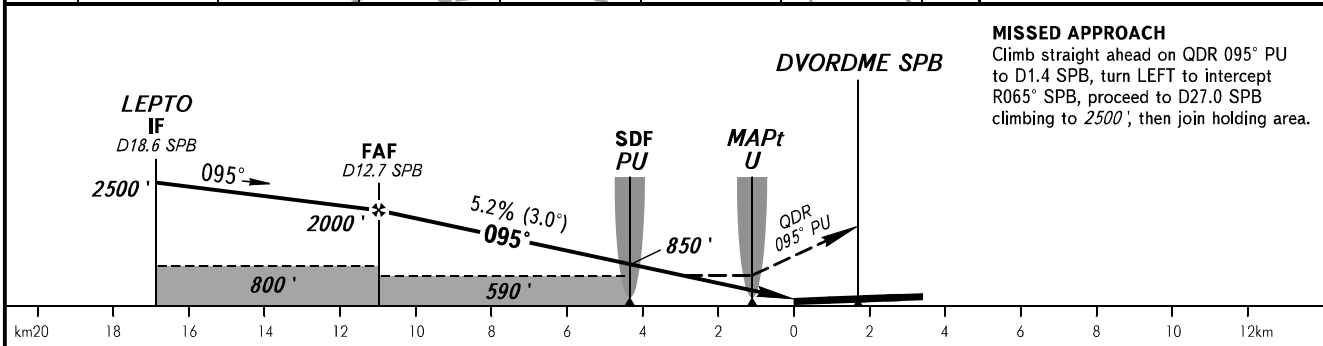
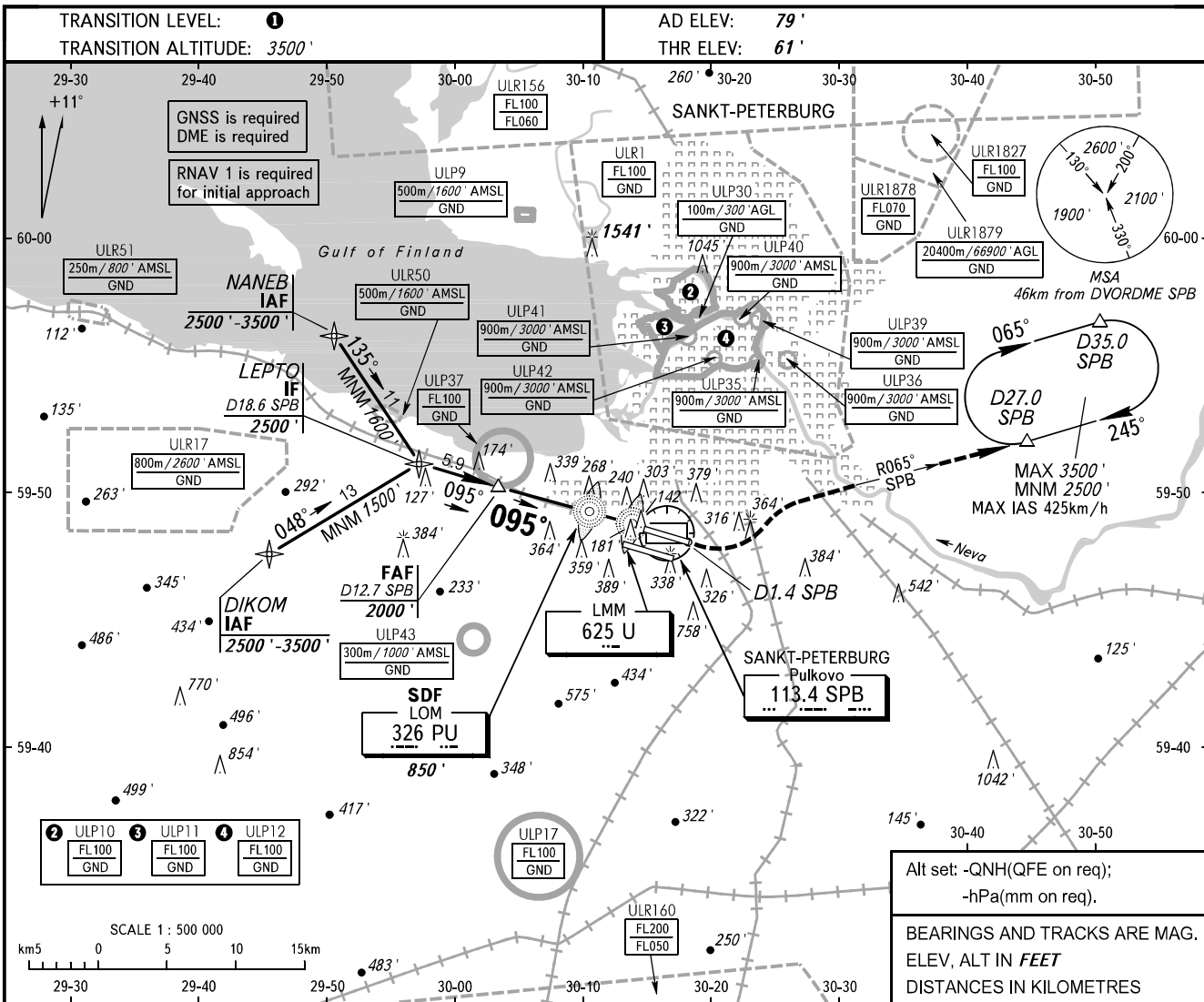


**INSTRUMENT  
APPROACH  
CHART - ICAO**

RADAR **120.300**  
TOWER **118.100**

**SANKT-PETERBURG, RUSSIA**  
PULKOVO  
NDB RWY 10L



| OCA(H)               |                  | A           | B           | C           | D            |
|----------------------|------------------|-------------|-------------|-------------|--------------|
| Straight-in Approach | <b>NDB (LOM)</b> | 490' (430') | 490' (430') | 490' (430') | 490' (430')  |
|                      | <b>With SDF</b>  | 590' (530') | 590' (530') | 590' (530') | 590' (530')  |
| Circling             |                  | 690' (610') | 790' (710') | 900' (820') | 1040' (960') |

**1** TRANSITION LEVEL:  
 - FL050 when QNH is 995.9 hPa (747mm mercury column) or above;  
 - FL060 when QNH is 959.9 hPa (720mm mercury column) or above, but less than 995.9 hPa (747mm mercury column);  
 - FL070 when QNH is less than 959.9 hPa (720mm mercury column).

**NOTE:**  
 1. The length of intermediate approach is less than 9.3km.  
 2. MAPt at LMM U. Timing not authorized for defining MAPt.

|                 |        |     |     |     |     |     |     |     |      |      |      |      |
|-----------------|--------|-----|-----|-----|-----|-----|-----|-----|------|------|------|------|
| GROUND SPEED    | km/h   | 150 | 180 | 210 | 240 | 270 | 300 | 330 | 360  | 390  | 420  | 450  |
| RATE OF DESCENT | m/s    | 2.2 | 2.6 | 3.0 | 3.5 | 3.9 | 4.3 | 4.8 | 5.2  | 5.6  | 6.1  | 6.5  |
|                 | ft/min | 430 | 516 | 602 | 688 | 774 | 860 | 946 | 1032 | 1118 | 1204 | 1290 |