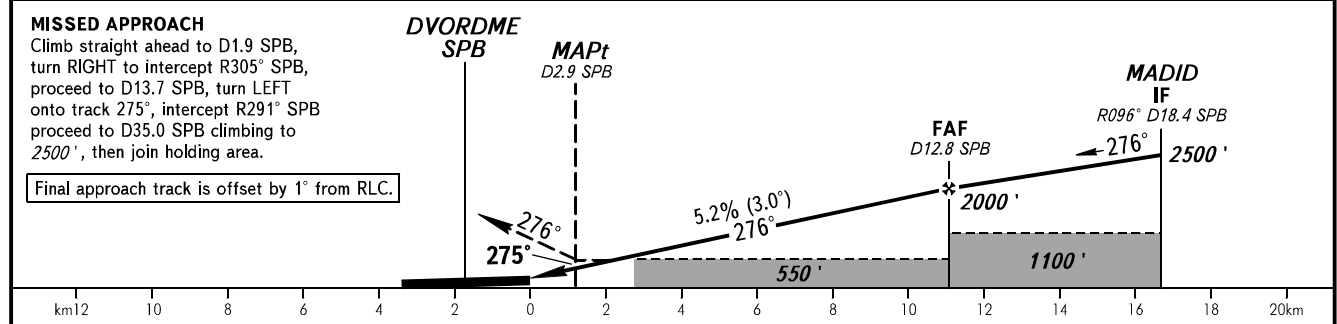
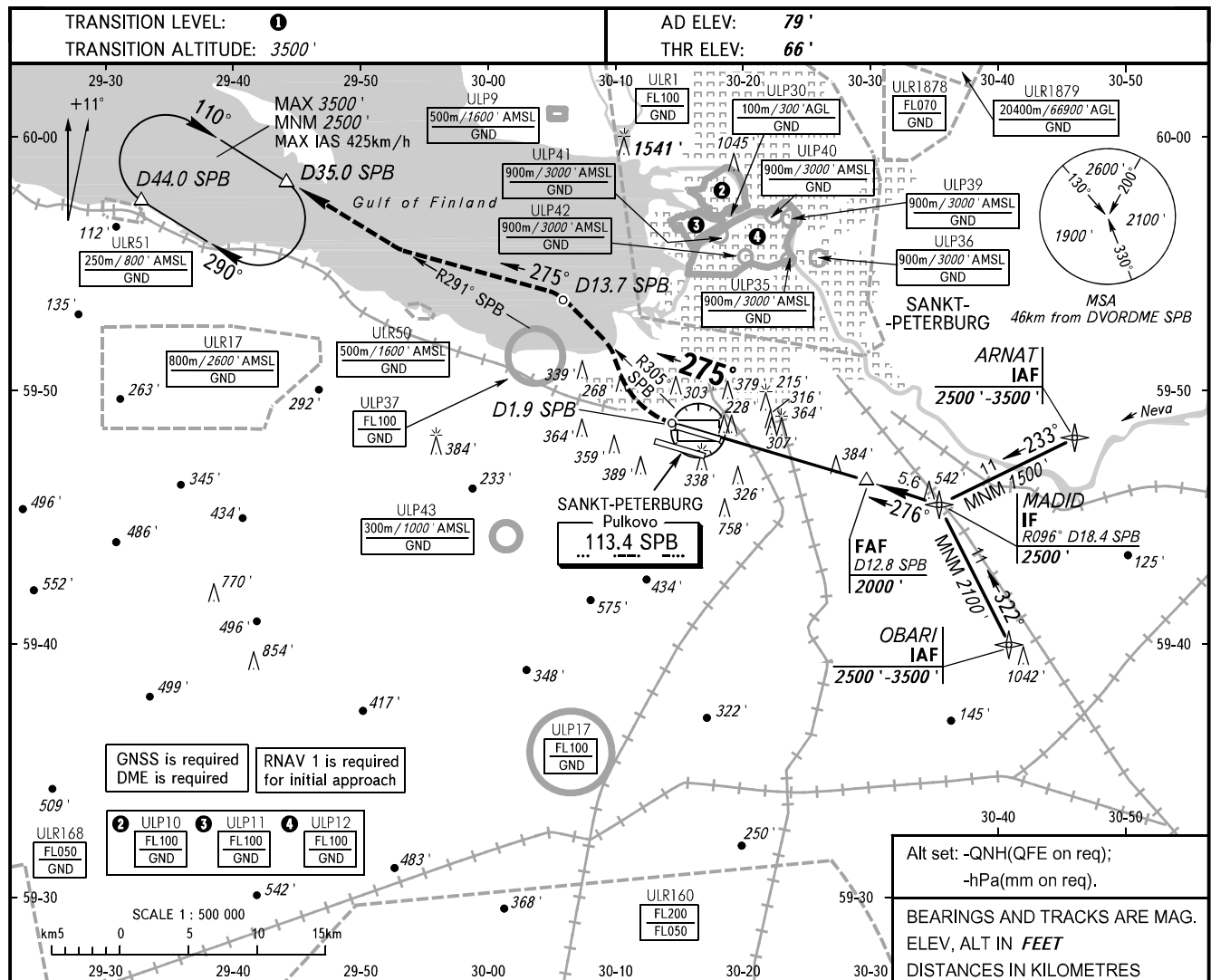


INSTRUMENT
APPROACH
CHART - ICAO

RADAR 120.300
TOWER 118.100

SANKT-PETERBURG, RUSSIA
PULKOVO
DVOR RWY 28R



OCA(H)		A	B	C	D							
Straight-in	Approach	550' (490')	550' (490')	550' (490')	550' (490')							
	Circling	690' (610')	790' (710')	900' (820')	1040' (960')							
GROUND SPEED	km/h	150	180	210	240	270	300	330	360	390	420	450
RATE OF DESCENT	m/s	2.2	2.6	3.0	3.5	3.9	4.3	4.8	5.2	5.6	6.1	6.5
	ft/min	430	516	602	688	774	860	946	1032	1118	1204	1290

1 TRANSITION LEVEL:
 - FL050 when QNH is 995.9 hPa (747mm mercury column) or above;
 - FL060 when QNH is 959.9 hPa (720mm mercury column) or above, but less than 995.9 hPa (747mm mercury column);
 - FL070 when QNH is less than 959.9 hPa (720mm mercury column).
NOTE:
 1. The length of intermediate approach is less than 9.3km.
 2. MAPt at D2.9 SPB. Timing not authorized for defining MAPt.
 3. Level flight segment is not AVBL before FAF.