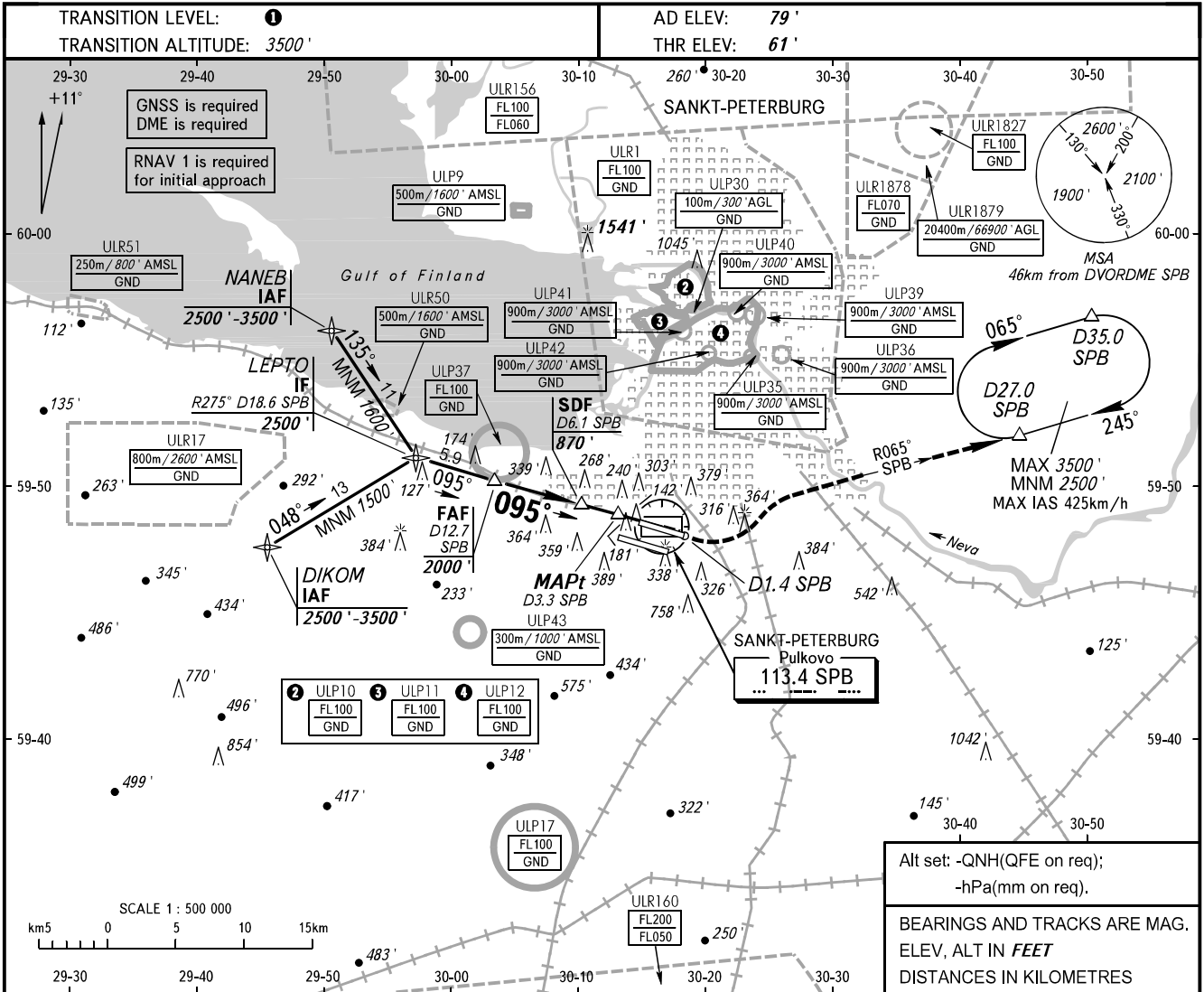


**INSTRUMENT
APPROACH
CHART - ICAO**

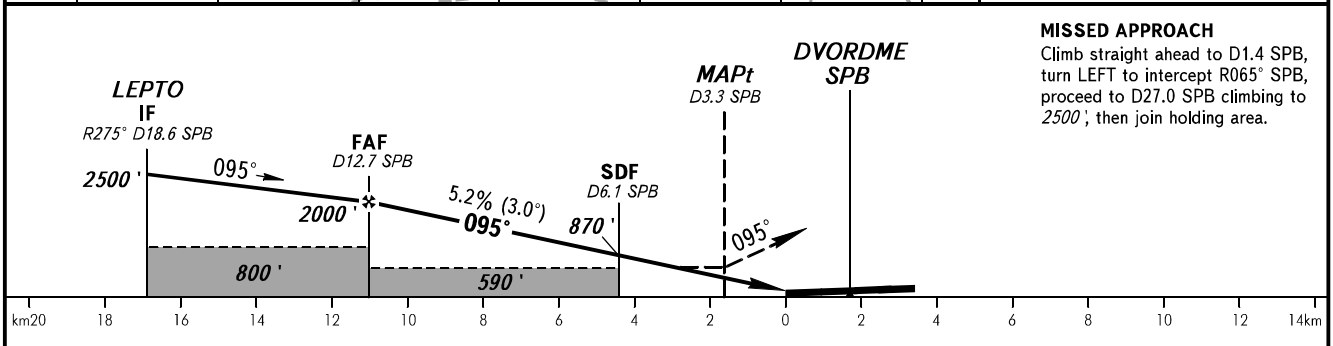
RADAR 120.300
TOWER 118.100

**SANKT-PETERBURG, RUSSIA
PULKOVO
DVOR RWY 10L**



Alt set: -QNH(QFE on req);
-hPa(mm on req).

BEARINGS AND TRACKS ARE MAG.
ELEV, ALT IN FEET
DISTANCES IN KILOMETRES



MISSED APPROACH
Climb straight ahead to D1.4 SPB,
turn LEFT to intercept R065° SPB,
proceed to D27.0 SPB climbing to
2500', then join holding area.

OCA(H)		A	B	C	D	① TRANSITION LEVEL: - FL050 when QNH is 995.9 hPa (747mm mercury column) or above; - FL060 when QNH is 959.9 hPa (720mm mercury column) or above, but less than 995.9 hPa (747mm mercury column); - FL070 when QNH is less than 959.9 hPa (720mm mercury column).													
Straight-in Approach	With SDF	520' (460')	520' (460')	520' (460')	520' (460')	NOTE: 1. The length of intermediate approach is less than 9.3km. 2. MAPt at D3.3 SPB. Timing not authorized for defining MAPt.													
	WO SDF	590' (530')	590' (530')	590' (530')	590' (530')														
Circling		690' (610')	790' (710')	900' (820')	1040' (960')														
GROUND SPEED		km/h	150	180	210	240	270	300	330	360	390	420	450						
RATE OF DESCENT		m/s	2.2	2.6	3.0	3.5	3.9	4.3	4.8	5.2	5.6	6.1	6.5						
		ft/min	430	516	602	688	774	860	946	1032	1118	1204	1290						