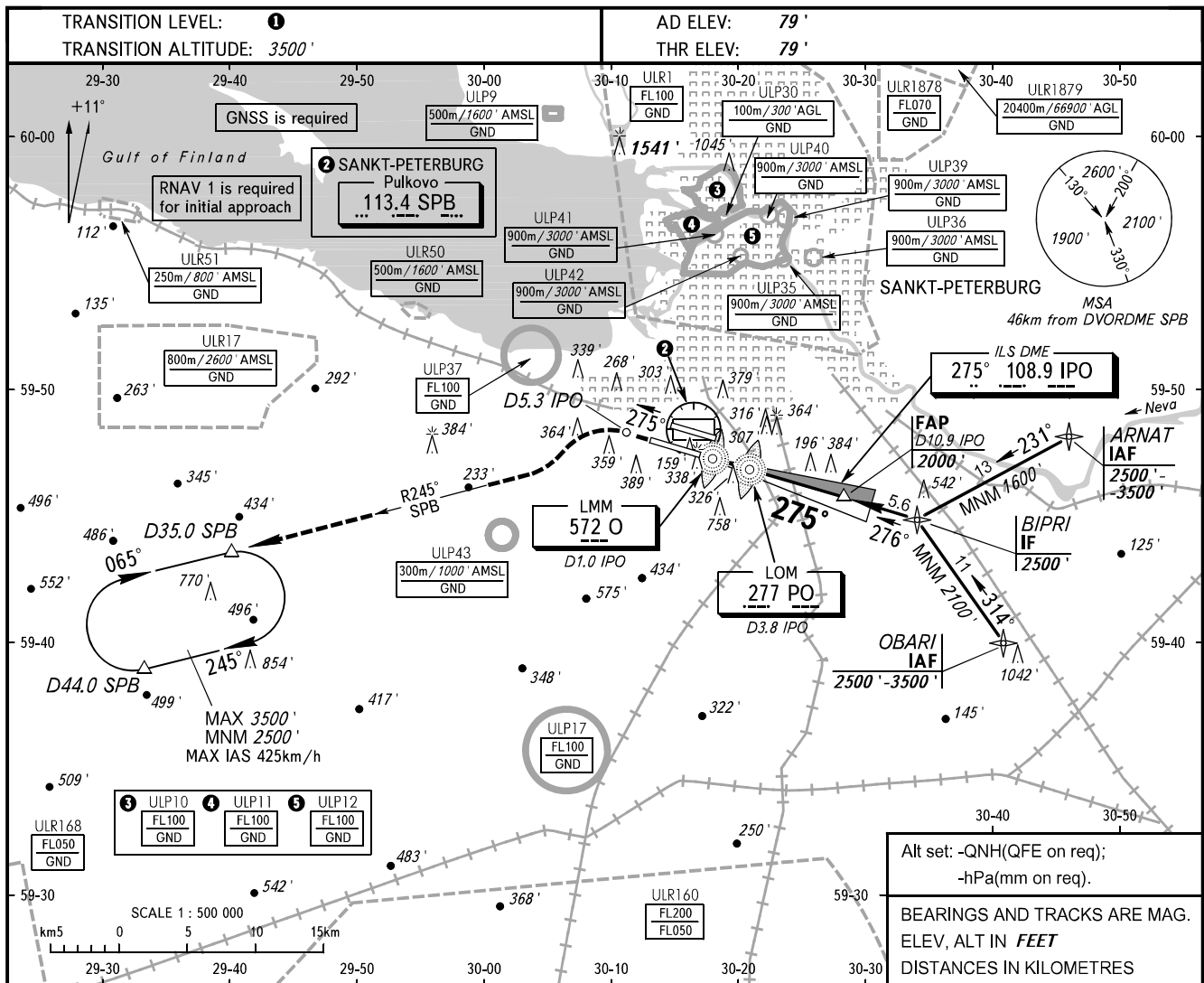


**INSTRUMENT
APPROACH
CHART - ICAO**

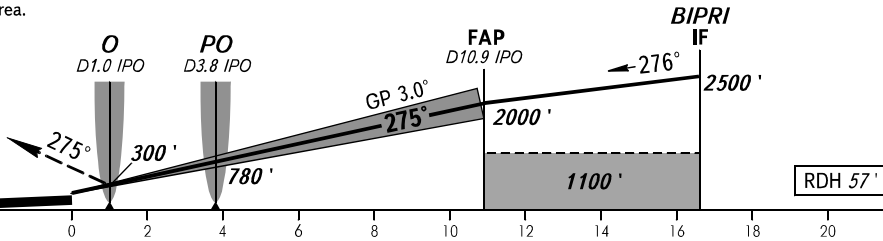
RADAR **120.300**
TOWER **118.700**

SANKT-PETERBURG, RUSSIA
PULKOVO
ILS Z RWY 28L CAT I



MISSED APPROACH

Climb straight ahead on track 275° to D5.3 IPO, turn LEFT to intercept R245° SPB, proceed to D35.0 SPB climbing to 2500', then join holding area.



OCA(H)		A	B	C	D							
Straight-in Approach	CAT I	218' (139')	227' (148')	237' (158')	250' (171')							
Circling		690' (610')	790' (710')	900' (820')	1040' (960')							
GROUND SPEED	km/h	150	180	210	240	270	300	330	360	390	420	450
RATE OF DESCENT	m/s	2.2	2.6	3.0	3.5	3.9	4.3	4.8	5.2	5.6	6.1	6.5
	ft/min	430	516	602	688	774	860	946	1032	1118	1204	1290

1 TRANSITION LEVEL:
- FL050 when QNH is 995.9 hPa (747mm mercury column) or above;
- FL060 when QNH is 959.9 hPa (720mm mercury column) or above, but less than 995.9 hPa (747mm mercury column);
- FL070 when QNH is less than 959.9 hPa (720mm mercury column).

NOTE:
1. Zero range of IPO DME is indicated at RWY 28L THR.
2. Level flight segment is not AVBL before FAF.