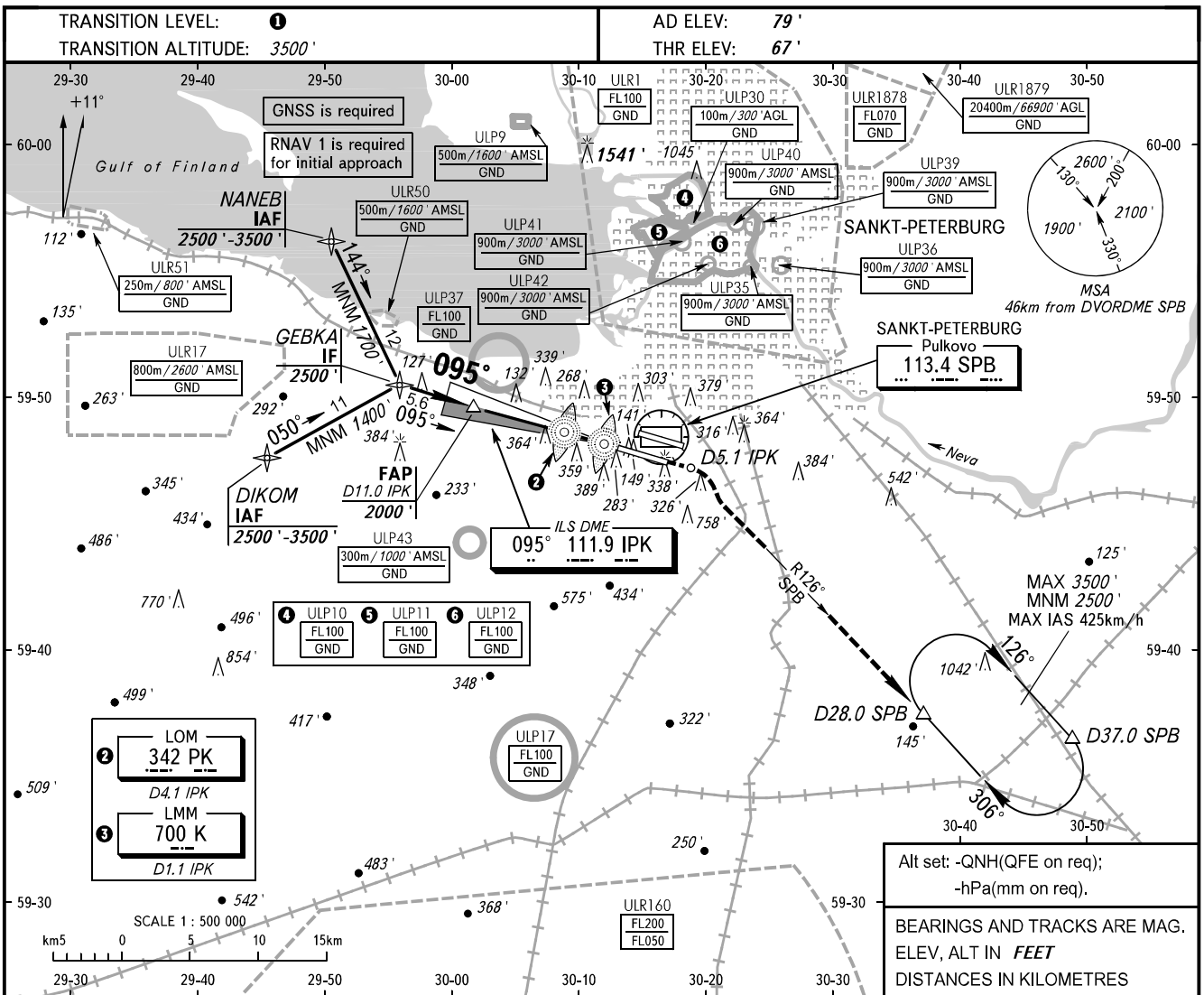


**INSTRUMENT
APPROACH
CHART - ICAO**

RADAR **120.300**
TOWER **118.700**

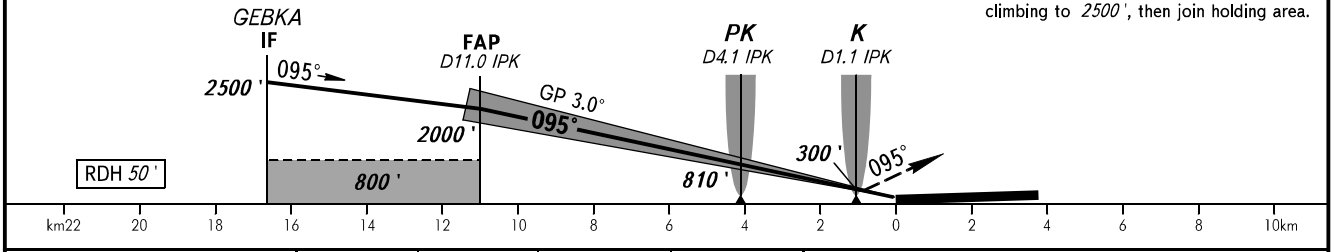
**SANKT-PETERBURG, RUSSIA
PULKOVO
ILS Z RWY 10R CAT I/II**



Alt set: -QNH(QFE on req);
-hPa(mm on req).

BEARINGS AND TRACKS ARE MAG.
ELEV, ALT IN FEET
DISTANCES IN KILOMETRES

MISSED APPROACH
Climb straight ahead on track 095° to D5.1 IPK, turn RIGHT to intercept R126° SPB, proceed to D28.0 SPB climbing to 2500', then join holding area.



OCA(H)		A	B	C	D
Straight-in Approach	CAT I	208' (142')	218' (152')	228' (162')	241' (175')
	CAT II	119' (53')	130' (64')	142' (76')	155' (89')
Circling		690' (610')	790' (710')	900' (820')	1040' (960')

1 TRANSITION LEVEL:
- FL050 when QNH is 995.9 hPa (747mm mercury column) or above;
- FL060 when QNH is 959.9 hPa (720mm mercury column) or above, but less than 995.9 hPa (747mm mercury column);
- FL070 when QNH is less than 959.9 hPa (720mm mercury column).

NOTE:
1. Zero range of IPK DME is indicated at RWY 10R THR.
2. Level flight segment is not AVBL before FAF.

GROUND SPEED	km/h	150	180	210	240	270	300	330	360	390	420	450
RATE OF DESCENT	m/s	2.2	2.6	3.0	3.5	3.9	4.3	4.8	5.2	5.6	6.1	6.5
	ft/min	430	516	602	688	774	860	946	1032	1118	1204	1290

CHANGE: COM