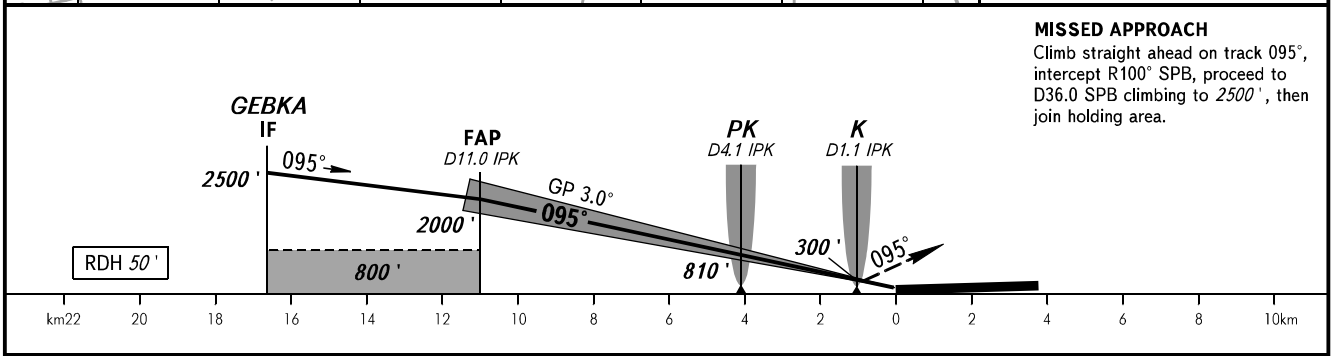
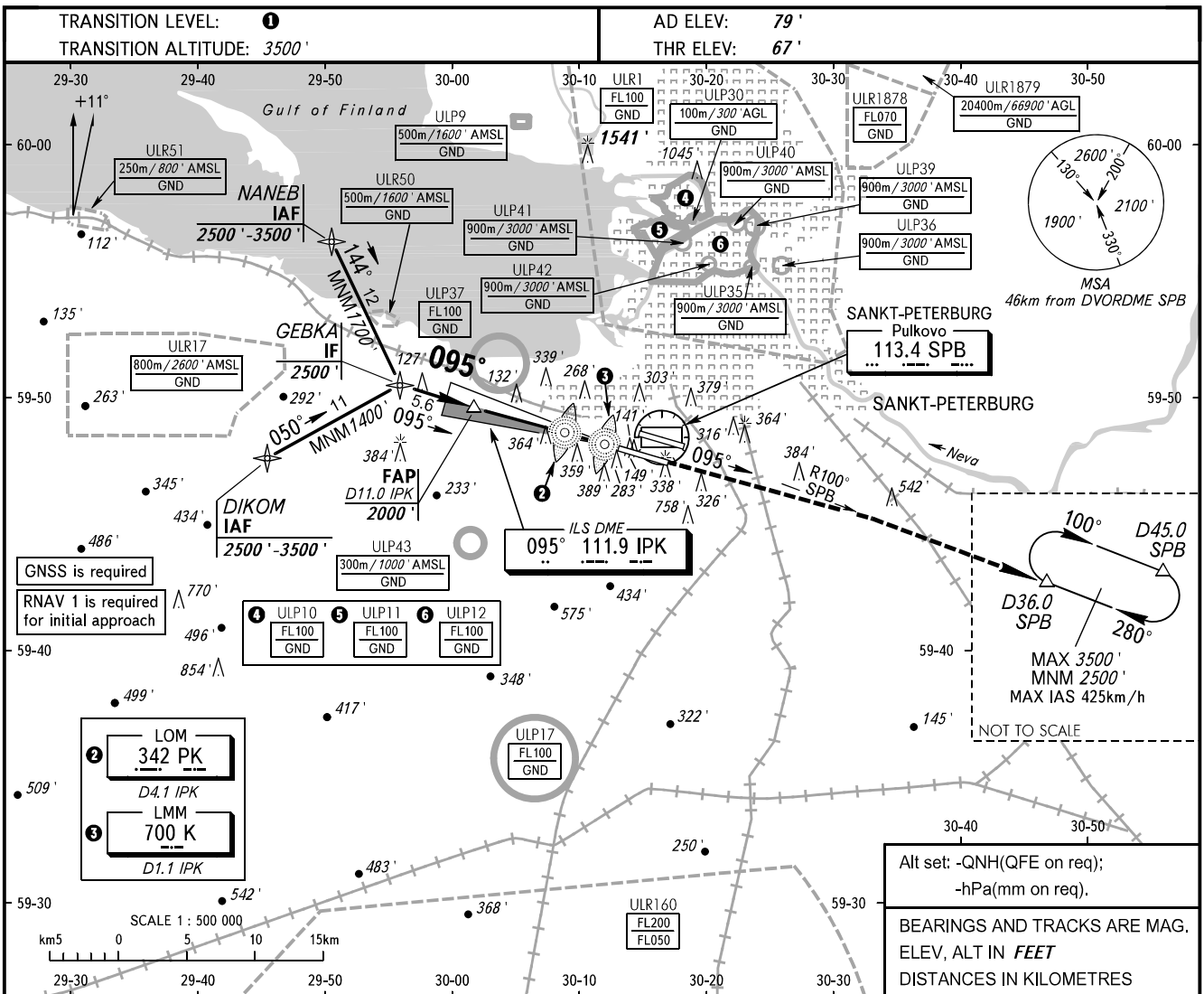


**INSTRUMENT  
APPROACH  
CHART - ICAO**

RADAR **120.300**  
TOWER **118.700**

**SANKT-PETERBURG, RUSSIA  
PULKOVO  
ILS Y RWY 10R CAT I/II**



OCA(H)		A	B	C	D
Straight-in Approach	<b>CAT I</b>	208' (142')	218' (152')	228' (162')	241' (175')
	<b>CAT II</b>	119' (53')	130' (64')	142' (76')	155' (89')
Circling		690' (610')	790' (710')	900' (820')	1040' (960')

**1** TRANSITION LEVEL:  
- FL050 when QNH is 995.9 hPa (747mm mercury column) or above;  
- FL060 when QNH is 959.9 hPa (720mm mercury column) or above, but less than 995.9 hPa (747mm mercury column);  
- FL070 when QNH is less than 959.9 hPa (720mm mercury column).

**NOTE:**  
1. Zero range of IPK DME is indicated at RWY 10R THR.  
2. Level flight segment is not AVBL before FAF.

GROUND SPEED	km/h	150	180	210	240	270	300	330	360	390	420	450
		RATE OF DESCENT	m/s	2.2	2.6	3.0	3.5	3.9	4.3	4.8	5.2	5.6
	ft/min	430	516	602	688	774	860	946	1032	1118	1204	1290

CHANGE: COM