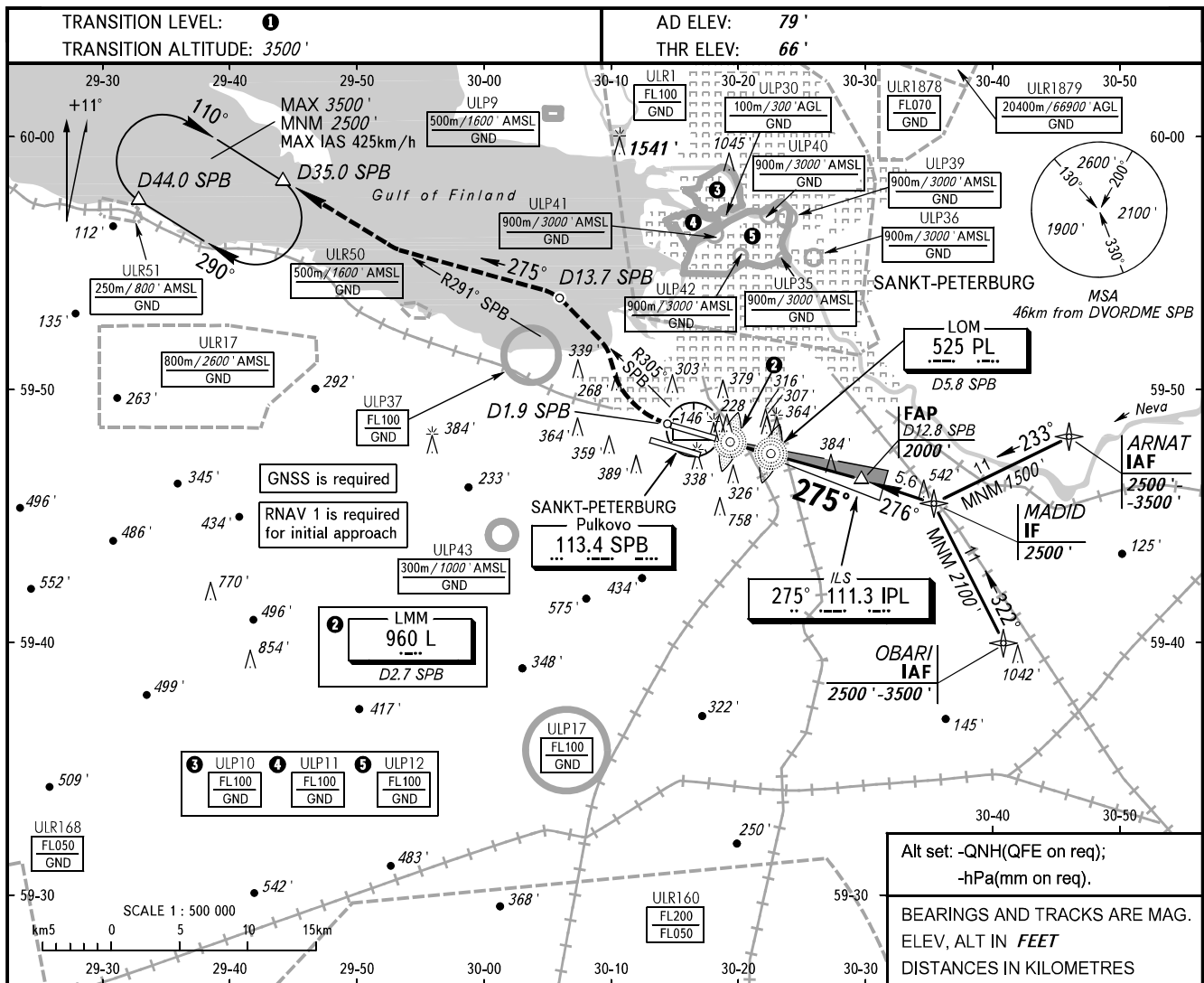


**INSTRUMENT
APPROACH
CHART - ICAO**

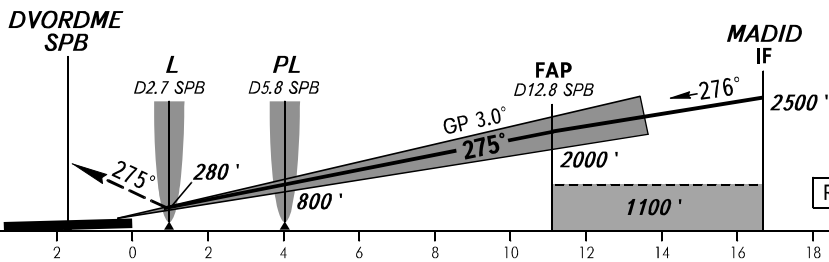
RADAR **120.300**
TOWER **118.100**

SANKT-PETERBURG, RUSSIA
PULKOVO
ILS RWY 28R CAT I/II/IIIA



MISSED APPROACH

Climb straight ahead on track 275° to D1.9 SPB, turn RIGHT to intercept R305° SPB, proceed to D13.7 SPB, turn LEFT onto track 275°, intercept R291° SPB, proceed to D35.0 SPB climbing to 2500', then join holding area.



OCA(H)		MNM climb gradient	A	B	C	D
Straight-in	CAT I	2.5%	288' (222')	300' (234')	308' (242')	319' (253')
		3.0%	255' (189')	267' (201')	275' (209')	286' (220')
Approach	CAT II	2.5%	169' (103')	186' (120')	198' (132')	212' (146')
		2.5%	169' (103')	186' (120')	198' (132')	212' (146')
Approach	CAT IIIA	2.5%	169' (103')	186' (120')	198' (132')	212' (146')
		4.0%	AVBL			
Circling			690' (610')	790' (710')	900' (820')	1040' (960')

1 TRANSITION LEVEL:
- FL050 when QNH is 995.9 hPa (747mm mercury column) or above;
- FL060 when QNH is 959.9 hPa (720mm mercury column) or above, but less than 995.9 hPa (747mm mercury column);
- FL070 when QNH is less than 959.9 hPa (720mm mercury column).

NOTE
Level flight segment is not AVBL before FAF.

GROUND SPEED	km/h	150	180	210	240	270	300	330	360	390	420	450
RATE OF DESCENT	m/s	2.2	2.6	3.0	3.5	3.9	4.3	4.8	5.2	5.6	6.1	6.5
	ft/min	430	516	602	688	774	860	946	1032	1118	1204	1290