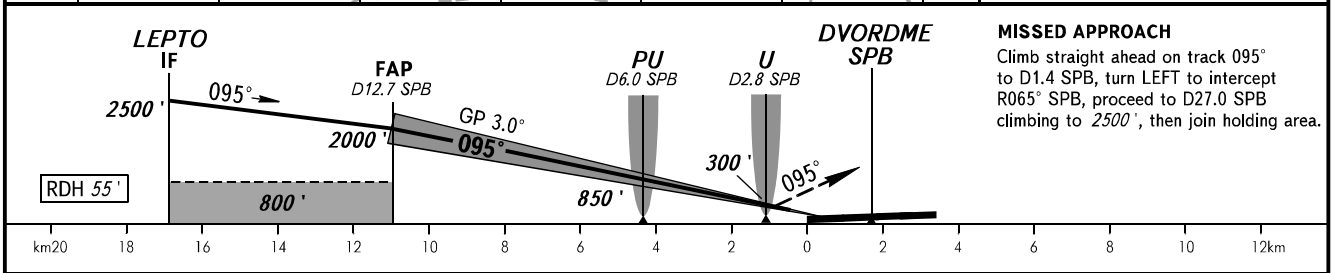
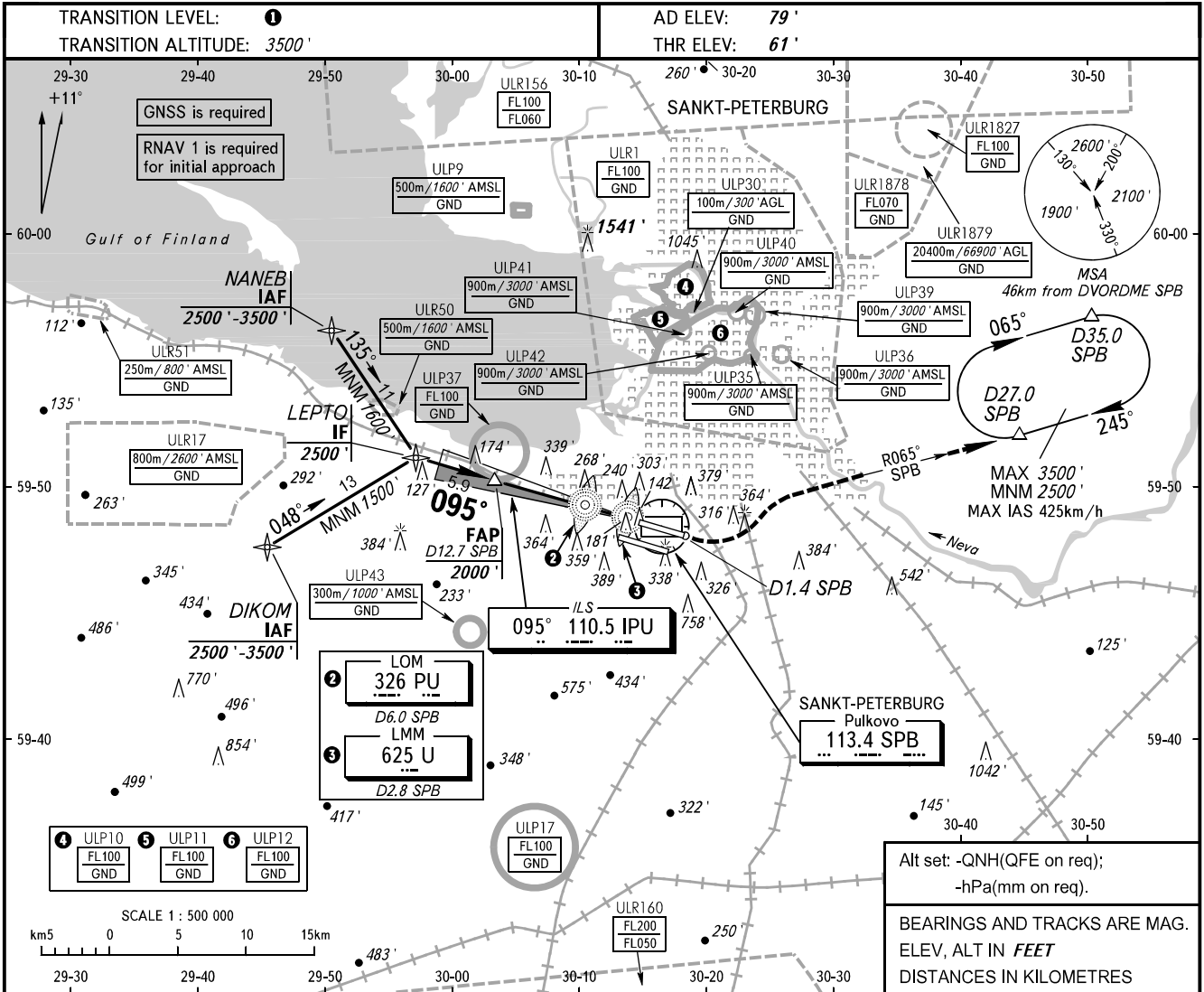


**INSTRUMENT
APPROACH
CHART - ICAO**

RADAR 120.300
TOWER 118.100

**SANKT-PETERBURG, RUSSIA
PULKOVO
ILS RWY 10L CAT I/II/IIIA**



OCA(H)		MNM climb gradient	A	B	C	D
Straight-in	CAT I	2.5%	350' (289')	362' (301')	370' (309')	381' (320')
		4.0%	243' (182')	255' (194')	263' (202')	274' (213')
	CAT II	2.5%	202' (141')	219' (158')	231' (170')	245' (184')
		3.0%	167' (106')	184' (123')	196' (135')	210' (149')
Approach	CAT IIIA	2.5%	202' (141')	219' (158')	231' (170')	245' (184')
		5.0%	AVBL			
Circling			690' (610')	790' (710')	900' (820')	1040' (960')

1 TRANSITION LEVEL:
 - FL050 when QNH is 995.9 hPa (747mm mercury column) or above;
 - FL060 when QNH is 959.9 hPa (720mm mercury column) or above, but less than 995.9 hPa (747mm mercury column);
 - FL070 when QNH is less than 959.9 hPa (720mm mercury column).

GROUND SPEED	km/h	150	180	210	240	270	300	330	360	390	420	450
		RATE OF DESCENT	m/s	2.2	2.6	3.0	3.5	3.9	4.3	4.8	5.2	5.6
	ft/min	430	516	602	688	774	860	946	1032	1118	1204	1290