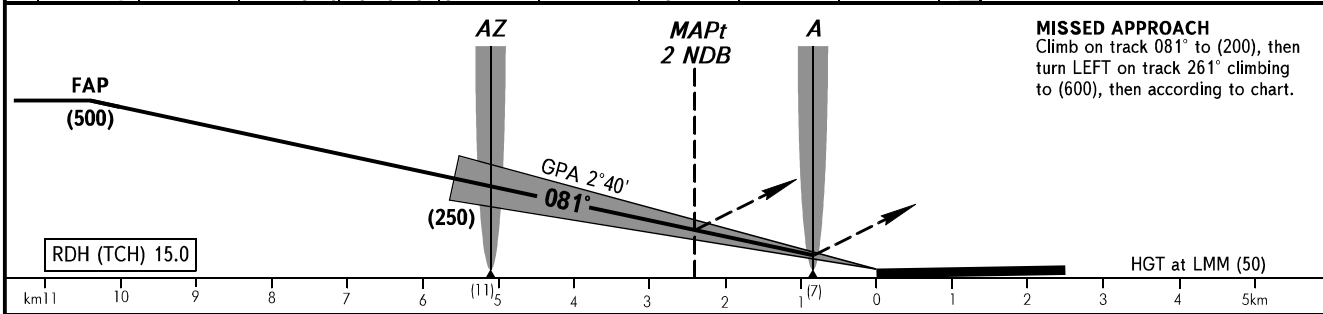
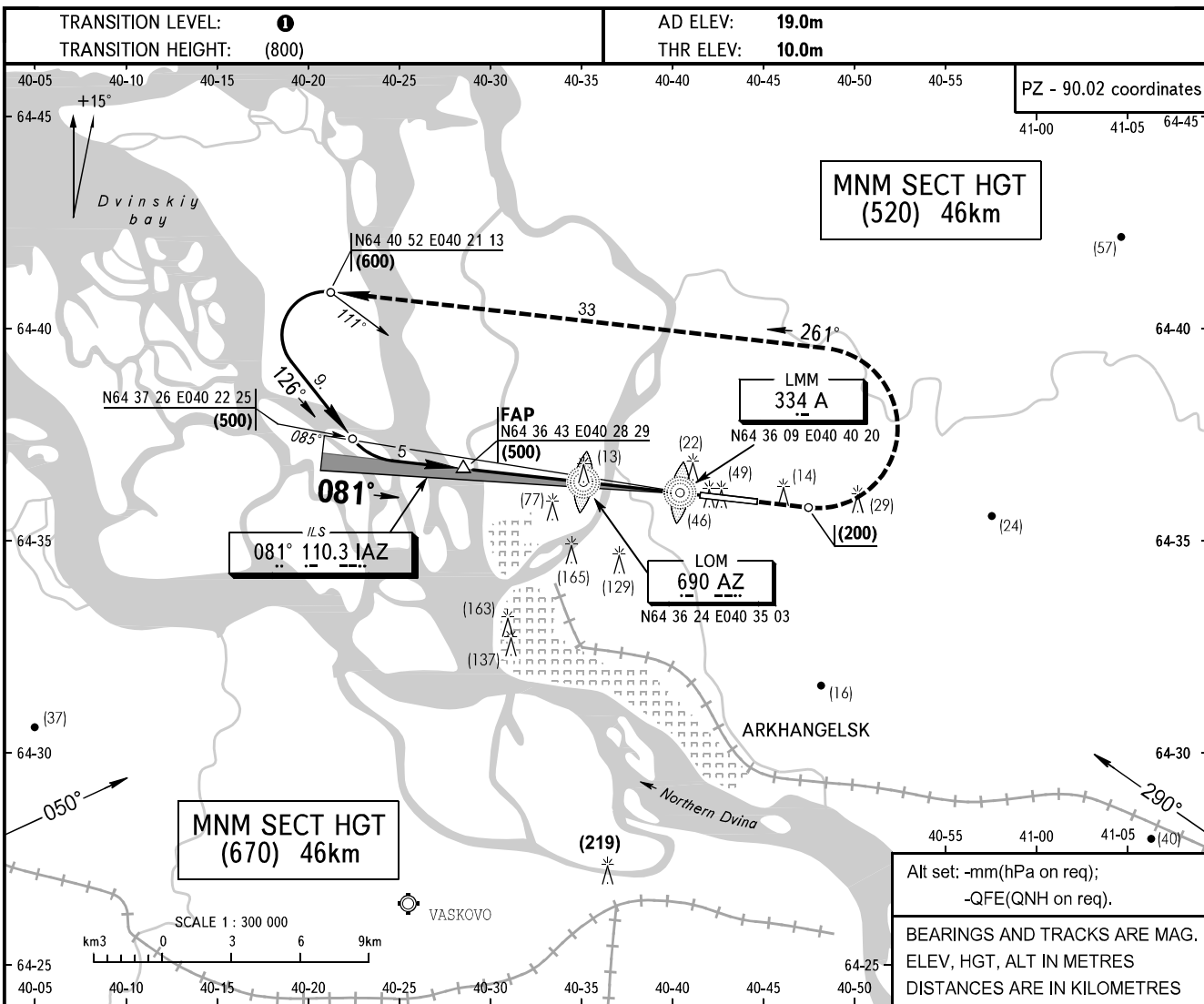


**INSTRUMENT  
APPROACH  
CHART - ICAO**

APPROACH 0430-1800 **122.0**  
TOWER (1800-0430 additionally  
seves as APPROACH) **121.8**

**ARKHANGELSK, RUSSIA**  
TALAGI  
ILS, 2 NDB RWY 08



| OCA/H                        |                        | A        | B        | C        | D        |      |      |      |      |      |      |      |      |
|------------------------------|------------------------|----------|----------|----------|----------|------|------|------|------|------|------|------|------|
| Straight-in Approach         | <b>CAT I</b>           | 53(43)   | 57(47)   | 60(50)   | 64(54)   |      |      |      |      |      |      |      |      |
|                              | <b>2 NDB</b>           | 137(127) | 137(127) | 137(127) | 137(127) |      |      |      |      |      |      |      |      |
| Circle-to-land               | <b>MDA/H</b>           | 160(150) | 230(220) | 300(290) | 300(290) |      |      |      |      |      |      |      |      |
|                              | <b>CLD base, m</b>     | 200      | 450      | 450      | 450      |      |      |      |      |      |      |      |      |
|                              | <b>VIS, m</b>          | 1600     | 4000     | 4000     | 4000     |      |      |      |      |      |      |      |      |
|                              | <b>Circling radius</b> | 3120     | 4980     | 7850     | 9790     |      |      |      |      |      |      |      |      |
| GROUND SPEED                 |                        | km/h     | 150      | 180      | 210      | 240  | 270  | 300  | 330  | 360  | 390  | 420  | 450  |
| LOM-THR 5100m                |                        | min:s    | 2.03     | 1.42     | 1.28     | 1.17 | 1.09 | 1.02 | 0.56 | 0.52 | 0.47 | 0.44 | 0.41 |
| RATE OF DESCENT (Grad. 4.7%) |                        | m/s      | 2.0      | 2.3      | 2.7      | 3.1  | 3.5  | 3.9  | 4.2  | 4.6  | 5.0  | 5.4  | 5.8  |

**1** - FLO40 when atmospheric pressure is 760mm mercury column or above;  
- FLO50 when atmospheric pressure is less than 760mm and is 733mm or above;  
- FLO60 when atmospheric pressure is less than 733mm.

**WARNING**  
Visual manoeuvring south of the aerodrome is prohibited.

**PRIORITY APPROACH:**  
1. After crossing LOM proceed on track 081° for 1min at the same HGT.  
2. Turn LEFT onto track 261° with descent up to the traffic circuit height and approach according to chart.