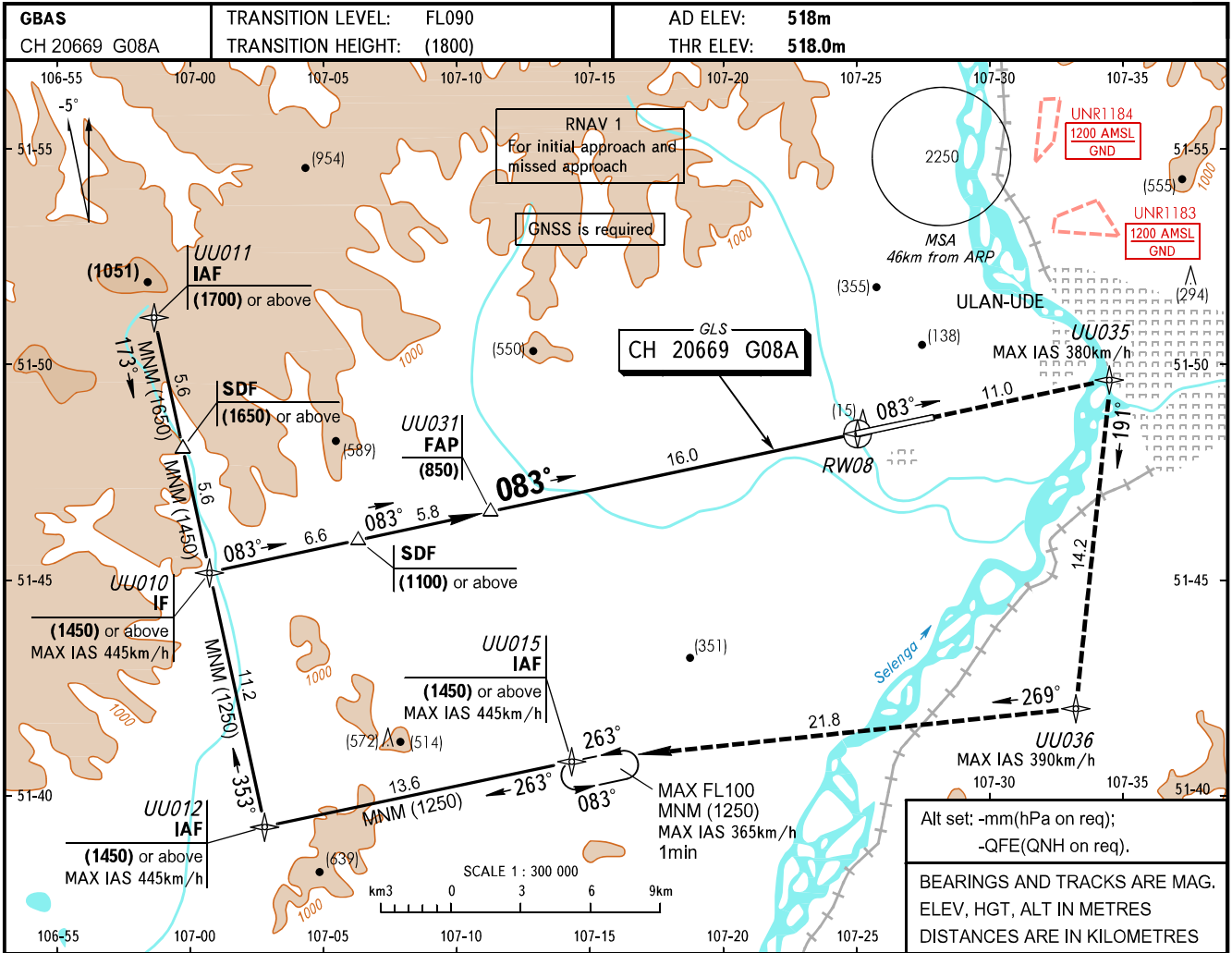


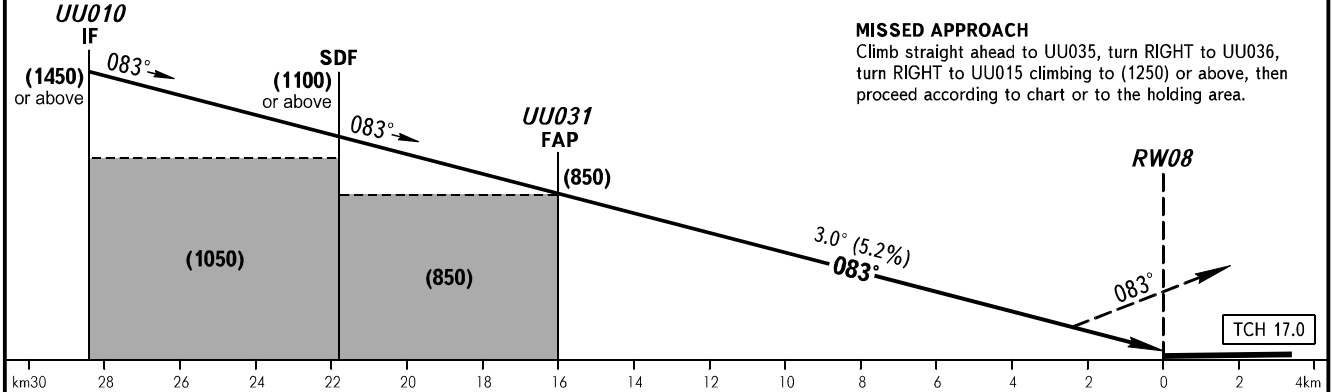
**INSTRUMENT  
APPROACH  
CHART - ICAO**

APPROACH	<b>129.300</b>
TOWER	<b>118.100</b>

**ULAN-UDE, RUSSIA  
MUKHINO  
GLS RWY 08 CAT I**



DIST to RWY08	16.2	14.0	12.0	10.0	8.0	6.0	4.0
HGT 3.0° APCH	(850)	(745)	(640)	(535)	(430)	(330)	(225)



**MISSED APPROACH**  
Climb straight ahead to UU035, turn RIGHT to UU036, turn RIGHT to UU015 climbing to (1250) or above, then proceed according to chart or to the holding area.

OCA(H)	MNM climb gradient for missed APCH	A	B	C	D	<b>WARNING</b> Turn before RW08 is PROHIBITED.					
Straight-in	CAT I	5.0%	581(63)	584(66)	587(69)						590(72)
		2.5%	709(191)	712(194)	715(197)						718(200)
Approach											
Circling		840(320)	975(455)	1170(655)	1295(780)						
GROUND SPEED		km/h	150	180	210	240	270	300	330	360	390
RATE OF DESCENT		m/s	2.2	2.6	3.0	3.5	3.9	4.3	4.8	5.2	5.6

CHANGE: New chart