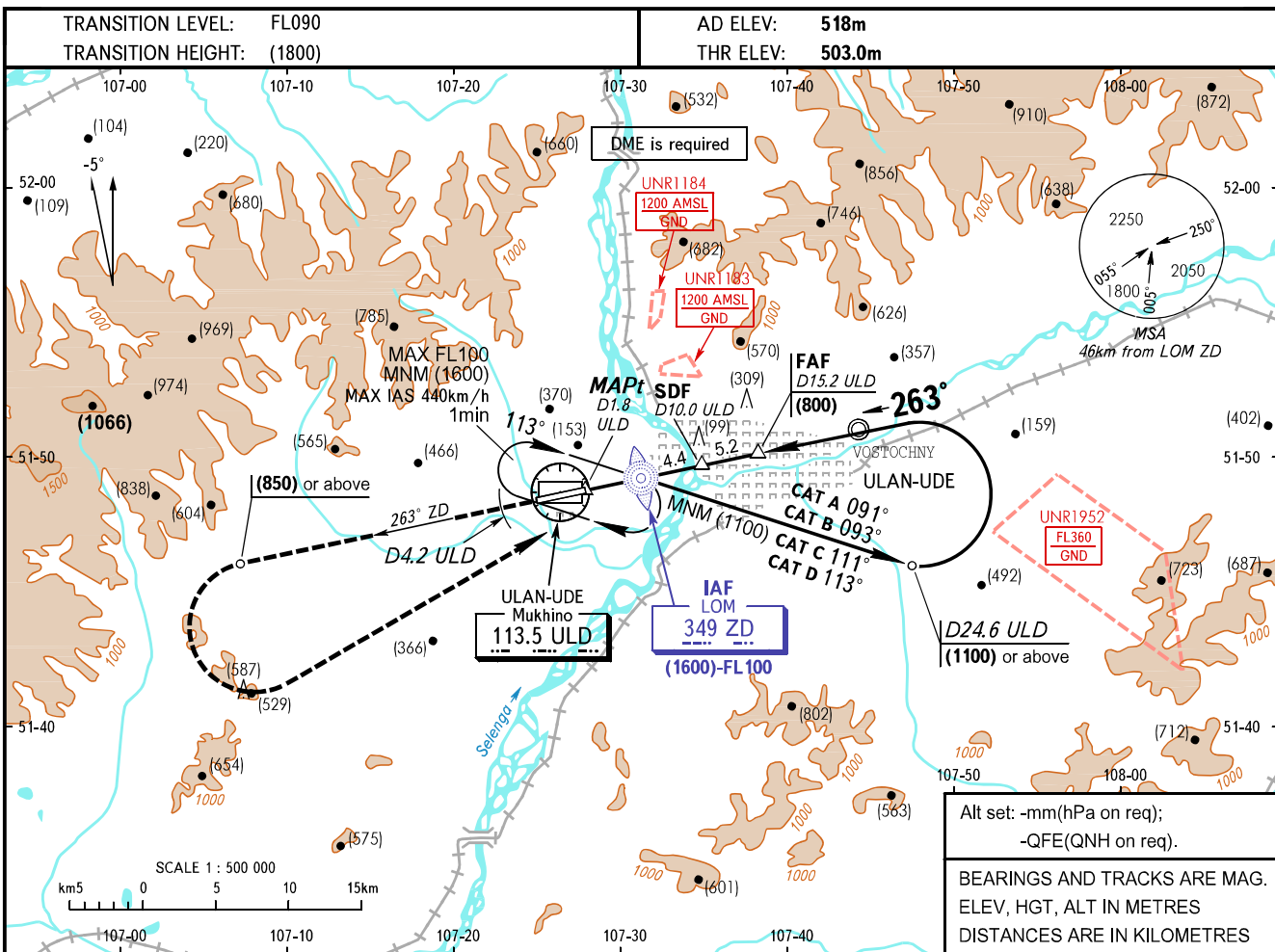


**INSTRUMENT  
APPROACH  
CHART - ICAO**

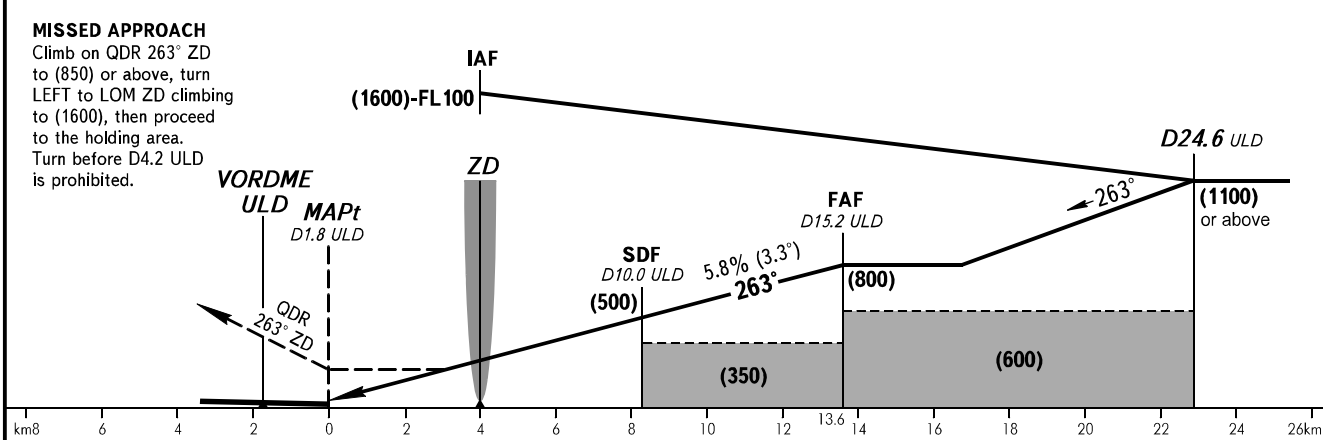
APPROACH **129.300**  
TOWER **118.100**

**ULAN-UDE, RUSSIA  
MUKHINO  
NDB X RWY 26**



Alt set: -mm(hPa on req);  
-QFE(QNH on req).  
BEARINGS AND TRACKS ARE MAG.  
ELEV, HGT, ALT IN METRES  
DISTANCES ARE IN KILOMETRES

DME ULD	6.0	8.0	10.0	12.0	14.0	15.2
HGT 3.3° APCH	(265)	(380)	(495)	(610)	(730)	(800)



OCA(H)	MNM climb gradient for missed APCH	A	B	C	D							
Straight-in	With SDF	2.9%	755(250)	755(250)	755(250)	755(250)						
	Approach	2.5%	795(290)	795(290)	795(290)	795(290)						
WO SDF		2.5%	855(350)	855(350)	855(350)	855(350)						
Circling			855(335)	975(455)	1170(655)	1295(780)						
GROUND SPEED		km/h	150	180	210	240	270	300	330	360	390	
RATE OF DESCENT		m/s		2.4	2.9	3.4	3.9	4.4	4.8	5.3	5.8	6.3

**WARNING:**  
1. The chart is AVBL if there is clearance to cross UNR1183, UNR1184, UNR1952 (during their activity) or by coordination with ATS unit.  
2. MAPt at D1.8 ULD. Timing not authorized for defining MAPt.

CHANGE: New chart