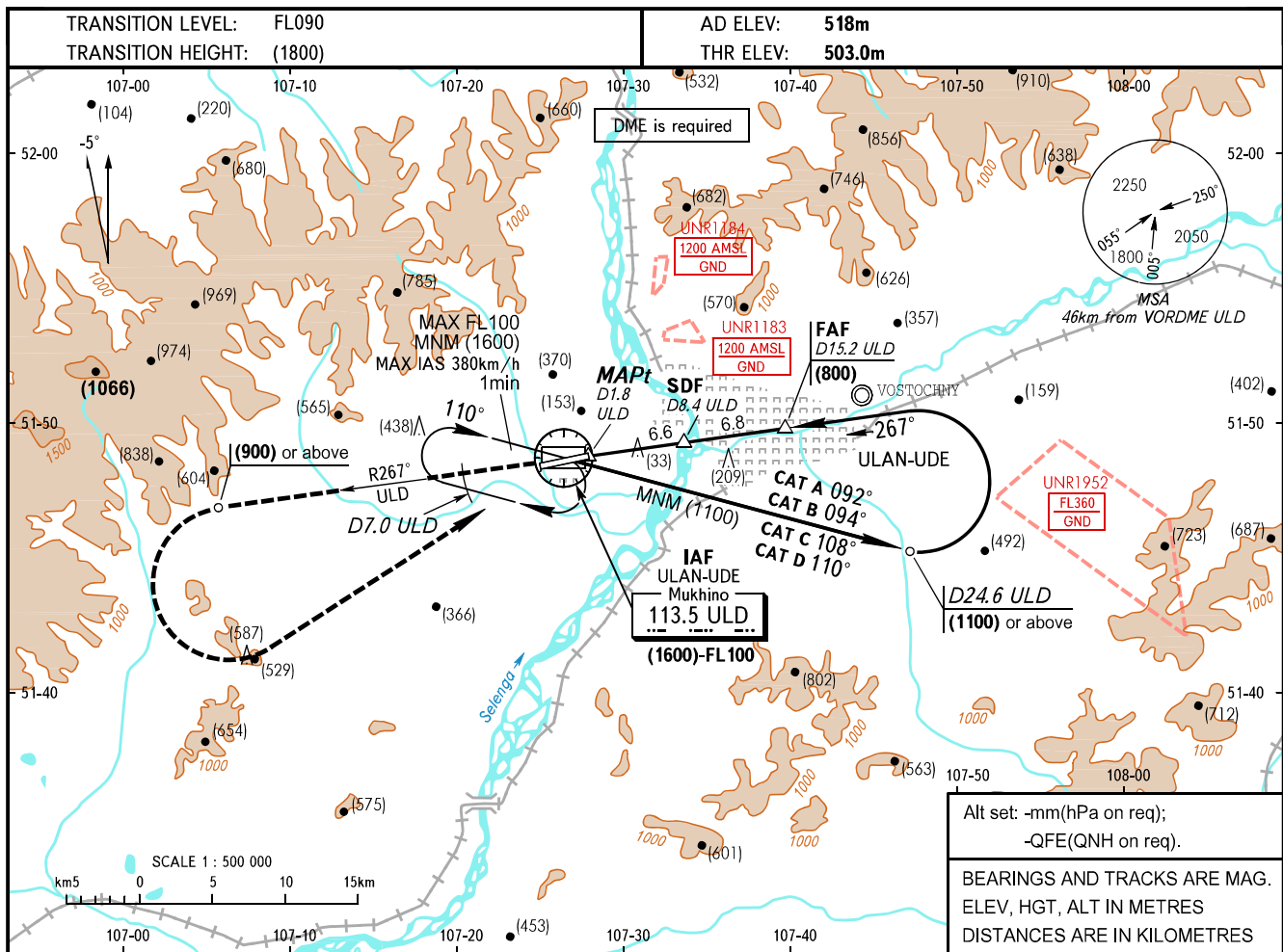


**INSTRUMENT
APPROACH
CHART - ICAO**

**ULAN-UDE, RUSSIA
MUKHINO
VOR RWY 26**

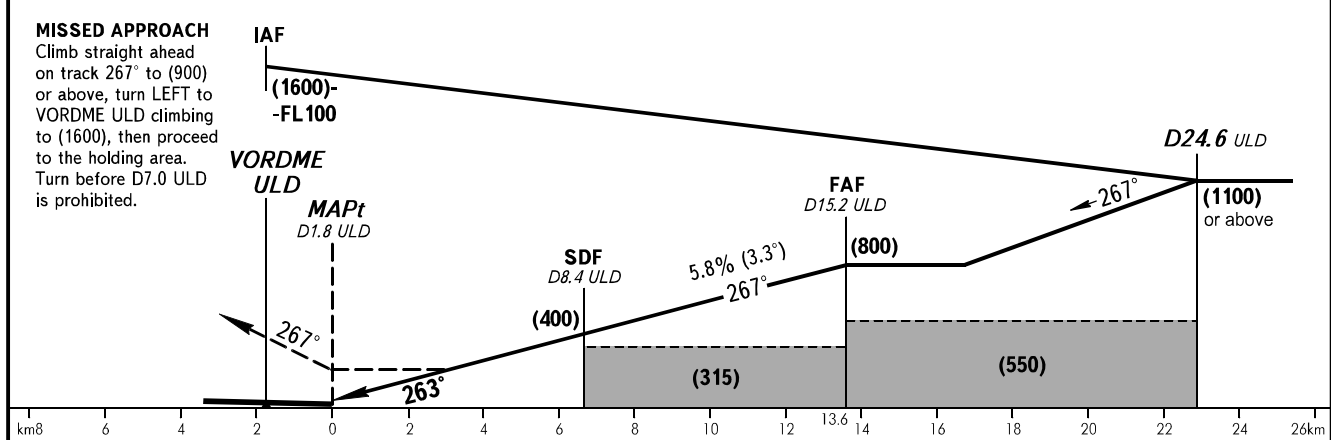
APPROACH	129.300
TOWER	118.100



Alt set: -mm(hPa on req);
-QFE(QNH on req).

BEARINGS AND TRACKS ARE MAG.
ELEV, HGT, ALT IN METRES
DISTANCES ARE IN KILOMETRES

DME ULD	6.0	8.0	10.0	12.0	14.0	15.2
HGT 3.3° APCH	(265)	(380)	(495)	(610)	(730)	(800)



OCA(H)	MNM climb gradient for missed APCH	A	B	C	D	
Straight-in	With SDF	3.1%	690(185)	690(185)	690(185)	690(185)
		2.5%	745(240)	745(240)	745(240)	745(240)
Approach	WO SDF	2.5%	820(315)	820(315)	820(315)	820(315)
		Circling	840(320)	975(455)	1170(655)	1295(780)

WARNING:

- The chart is AVBL if there is clearance to cross UNR1183, UNR1184, UNR1952 (during their activity) or by coordination with ATS unit.
- The final approach track is offset by 4° from RCL.
- MAPt at D1.8 ULD. Timing not authorized for defining MAPt.

GROUND SPEED	km/h	150	180	210	240	270	300	330	360	390
RATE OF DESCENT	m/s	2.4	2.9	3.4	3.9	4.4	4.8	5.3	5.8	6.3