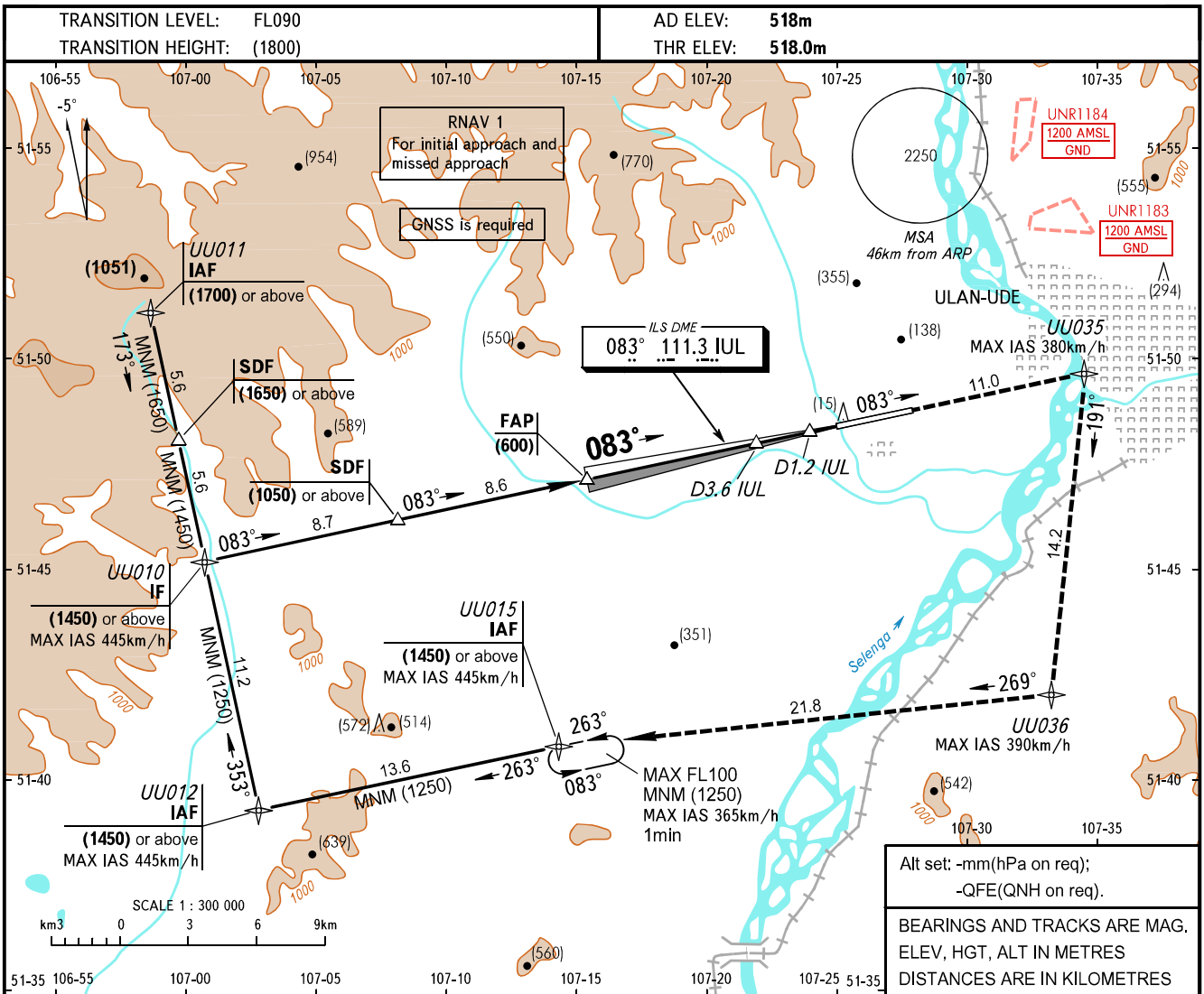


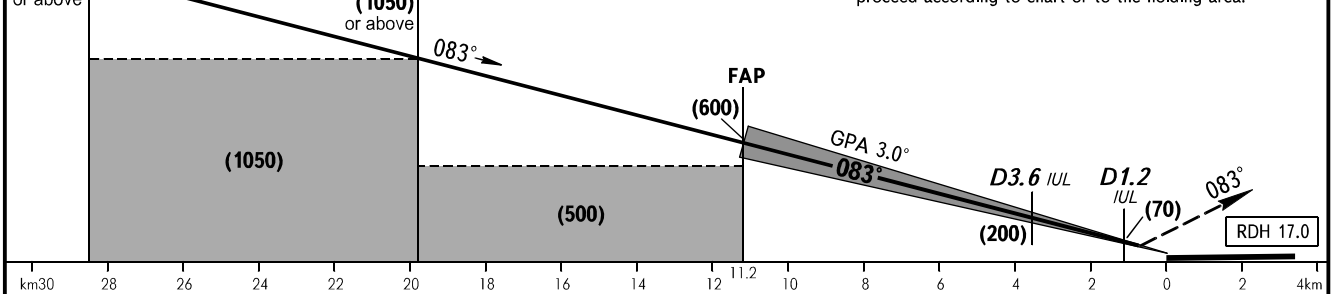
**INSTRUMENT
APPROACH
CHART - ICAO**

APPROACH	129.300
TOWER	118.100

**ULAN-UDE, RUSSIA
MUKHINO
ILS Z RWY 08 CAT I**



MISSED APPROACH
Climb straight ahead to UU035, turn RIGHT to UU036, turn RIGHT to UU015 climbing to (1250) or above, then proceed according to chart or to the holding area.



OCA(H)	MNM climb gradient for missed APCH	A	B	C	D						
Straight-in	CAT I	5.0%	581(63)	584(66)	587(69)	590(72)					
		2.5%	709(191)	712(194)	715(197)	718(200)					
Approach											
Circling		840(320)	975(455)	1170(655)	1295(780)						
GROUND SPEED		km/h	150	180	210	240	270	300	330	360	390
RATE OF DESCENT		m/s	2.2	2.6	3.0	3.5	3.9	4.3	4.8	5.2	5.6

WARNING
Turn before RW08 is PROHIBITED.

CHANGE: New chart