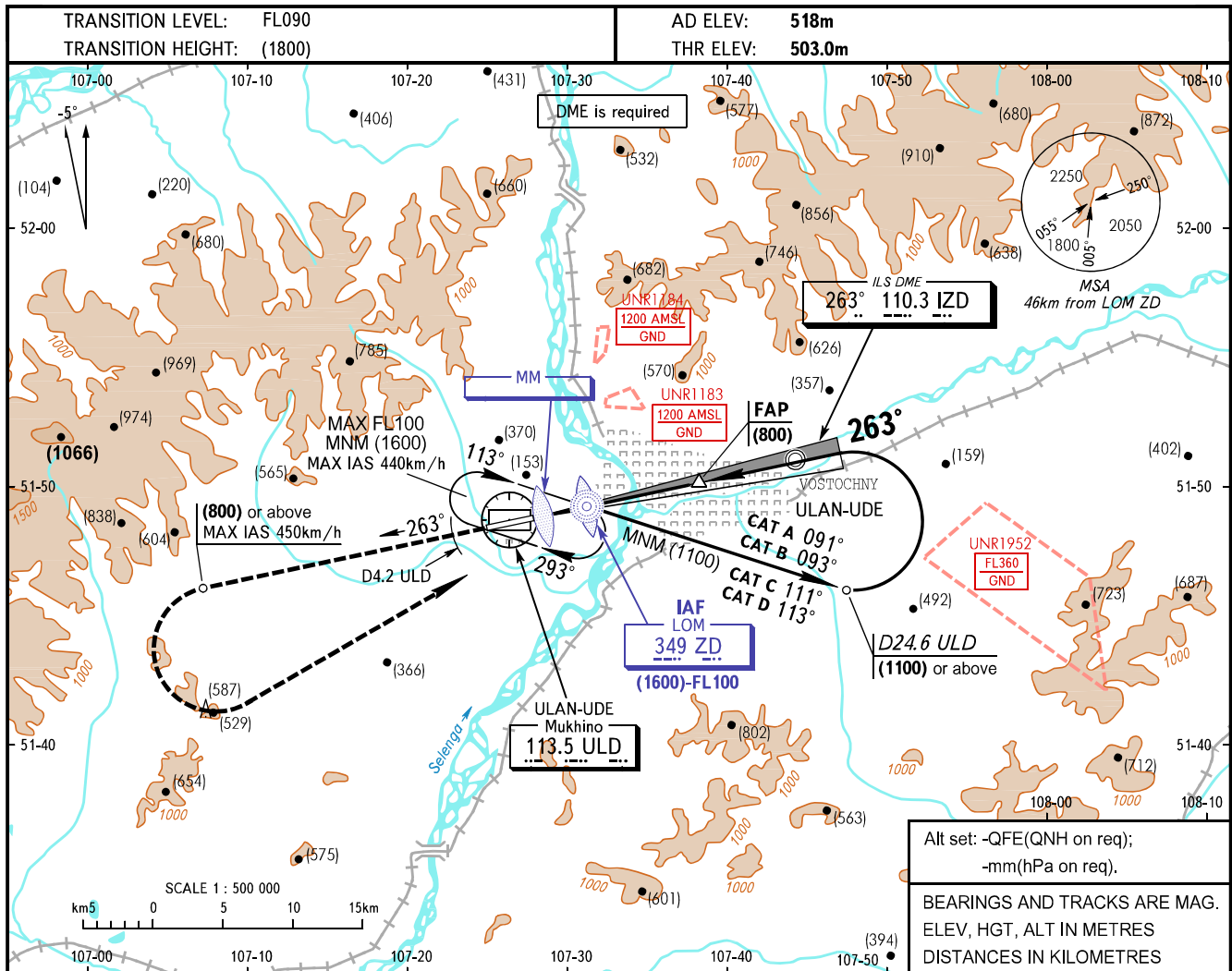


**INSTRUMENT  
APPROACH  
CHART - ICAO**

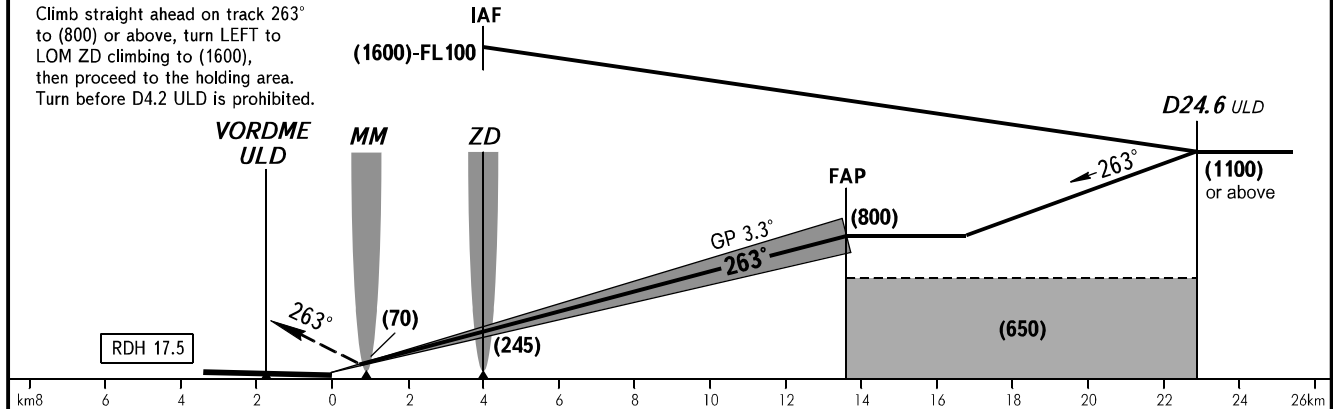
APPROACH **129.300**  
TOWER **118.100**

**ULAN-UDE, RUSSIA  
MUKHINO  
ILS Y RWY 26 CAT I**



**MISSED APPROACH**

Climb straight ahead on track 263° to (800) or above, turn LEFT to LOM ZD climbing to (1600), then proceed to the holding area. Turn before D4.2 ULD is prohibited.



OCA(H)	MNM climb gradient for missed APCH	CAT I	A	B	C	D					
			4.0%	587(83)	590(86)	604(100)	607(103)				
Straight-in Approach	2.5%	CAT I	691(188)	694(191)	698(195)	701(198)					
			840(320)	975(455)	1170(655)	1295(780)					
Circling											
GROUND SPEED	km/h		150	180	210	240	270	300	330	360	390
RATE OF DESCENT	m/s		2.4	2.9	3.4	3.9	4.4	4.8	5.3	5.8	6.3

**WARNING**

The chart is AVBL if there is clearance to cross UNR1183, UNR1184, UNR1952 (during their activity) or by coordination with ATS unit.