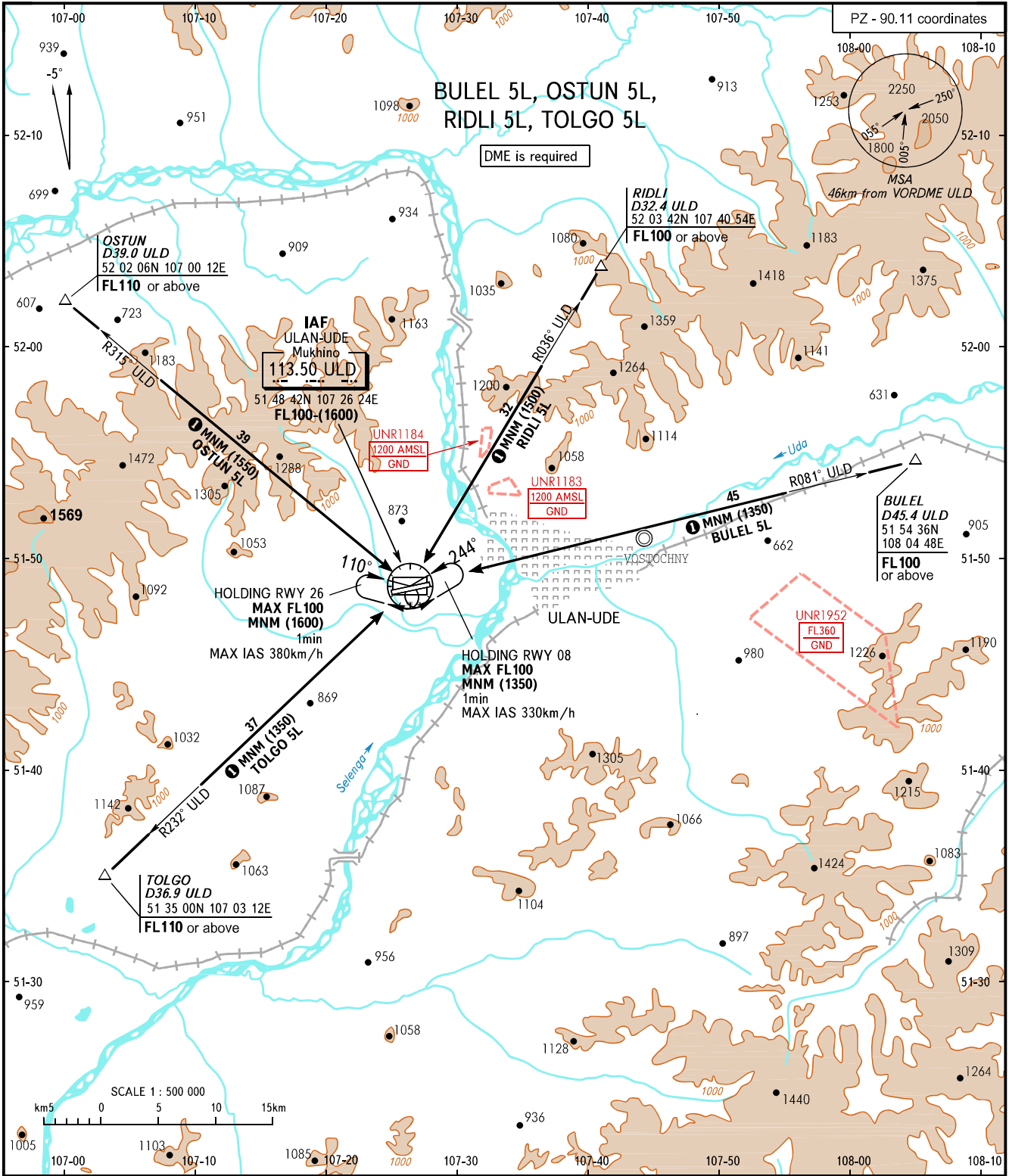


STANDARD ARRIVAL CHART
INSTRUMENT (STAR) - ICAO

TRANSITION
LEVEL : **FL090**

ULAN-UDE, RUSSIA
MUKHINO
RWY 08/26



APPROACH **129.300**
TOWER **118.100**

WARNING:

- ① MNM HGT is (1600) for approach to RWY 26.
- 1. STAR BULEL 5L is AVBL if there is clearance to cross UNR1952 (during its activity) or by coordination with ATS unit.
- 2. The chart is AVBL if there is clearance to cross UNR1183, UNR1184, UNR1952 (during their activity) or by coordination with ATS unit.

BEARINGS AND TRACKS ARE MAGNETIC
ALTITUDES, HEIGHTS AND ELEVATIONS ARE IN METRES
DISTANCES ARE IN KILOMETRES

CHANGE: New chart