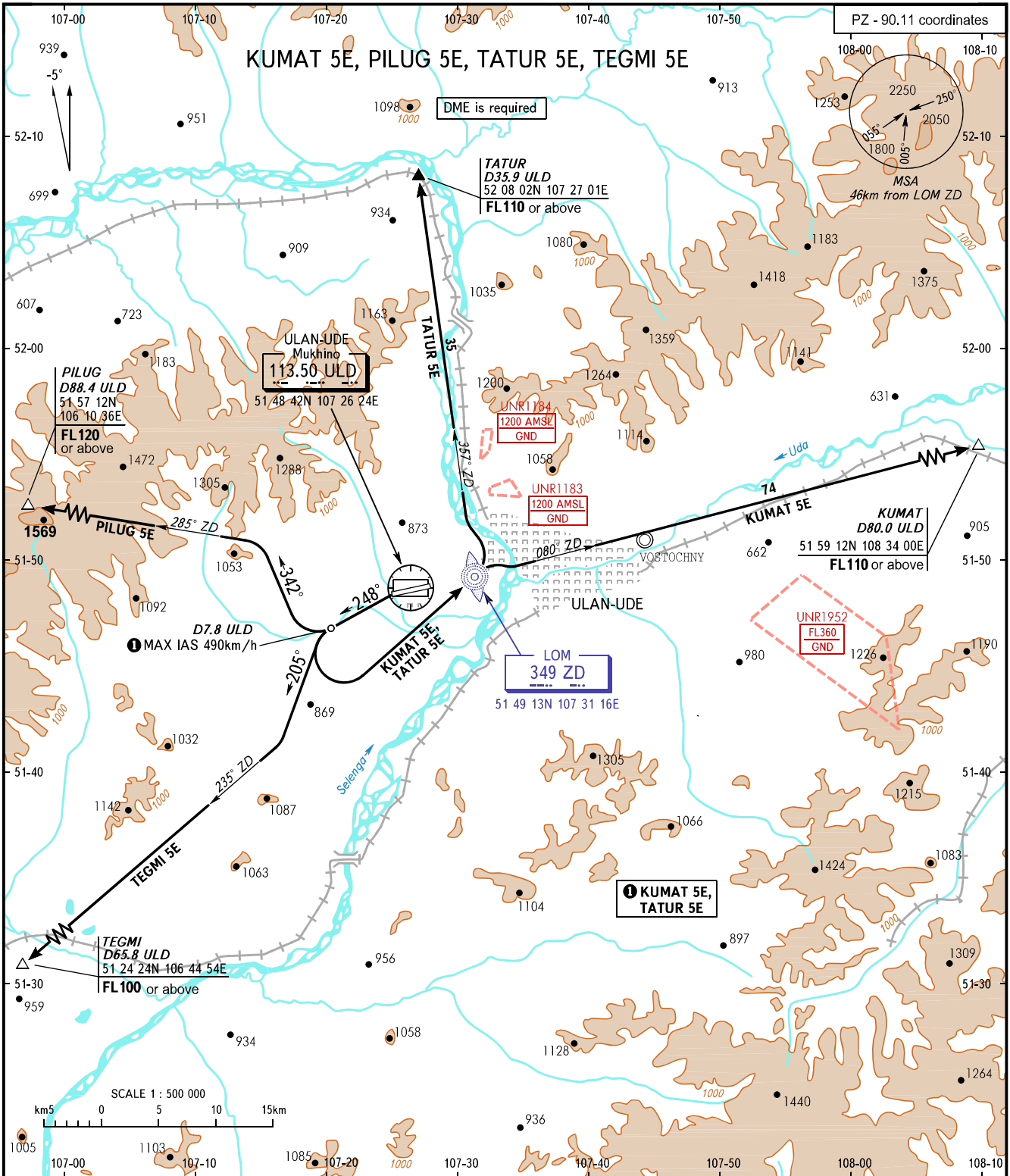


STANDARD DEPARTURE CHART  
INSTRUMENT (SID) - ICAO

TRANSITION  
HEIGHT : (1800)

ULAN-UDE, RUSSIA  
MUKHINO  
RWY 26



TOWER **118.100**  
APPROACH **129.300**

**WARNING:**

1. Take-off track is offset by 15° from RCL.
2. SID KUMAT 5E is AVBL if there is clearance to cross UNR1952 (during its activity) or by coordination with ATS unit.
3. SID KUMAT 5E, TATUR 5E are AVBL if there is clearance to cross UNR1183, UNR1184 (during their activity) or by coordination with ATS unit.
4. If unable to comply with MNM climb gradients, the flight crews must inform ATS unit about it.
5. MNM climb gradients (required due to obstacles):
  - 6.0% up to FL110 for SID KUMAT 5E;
  - 7.1% up to FL120 for SID PILUG 5E;
  - 5.0% up to FL110 for SID TATUR 5E;
  - 5.0% up to FL100 for SID TEGMI 5E.

BEARINGS AND TRACKS ARE MAGNETIC  
ALTITUDES, HEIGHTS AND ELEVATIONS ARE IN METRES  
DISTANCES ARE IN KILOMETRES