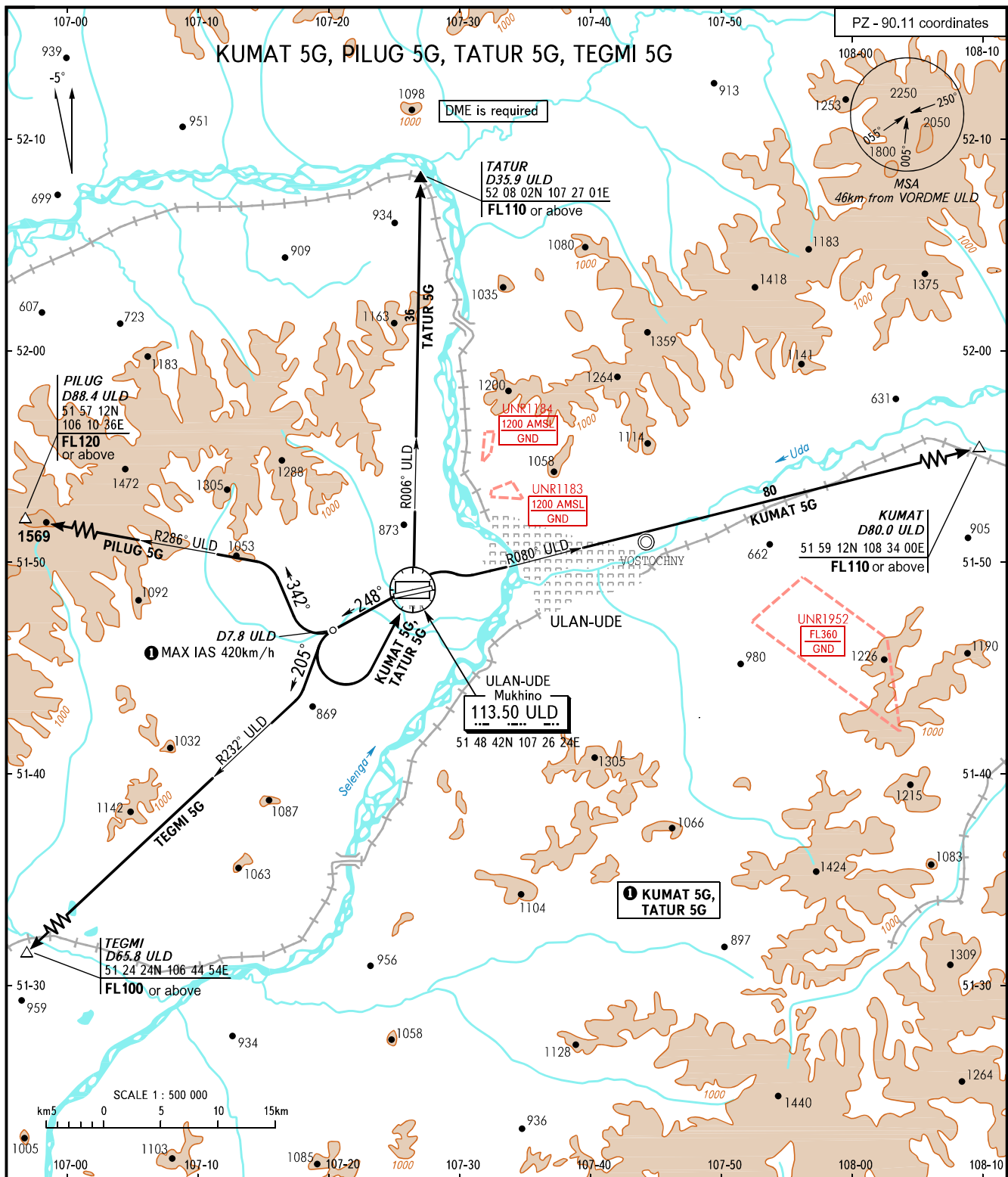


STANDARD DEPARTURE CHART
INSTRUMENT (SID) - ICAO

TRANSITION
HEIGHT : (1800)

ULAN-UDE, RUSSIA
MUKHINO
RWY 26



TOWER 118.100
APPROACH 129.300

WARNING:

1. Take-off track is offset by 15° from RCL.
2. SID KUMAT 5G, TATUR 5G are AVBL if there is clearance to cross UNR1183, UNR1184 (during their activity) or by coordination with ATS unit.
3. If unable to comply with MNM climb gradients, the flight crews must inform ATS unit about it.
4. MNM climb gradients (required due to obstacles):
 - 5.0% up to FL110 for SID KUMAT 5G;
 - 7.1% up to FL120 for SID PILUG 5G;
 - 5.0% up to FL110 for SID TATUR 5G;
 - 5.0% up to FL100 for SID TEGMI 5G.

BEARINGS AND TRACKS ARE MAGNETIC
ALTITUDES, HEIGHTS AND ELEVATIONS ARE IN METRES
DISTANCES ARE IN KILOMETRES