

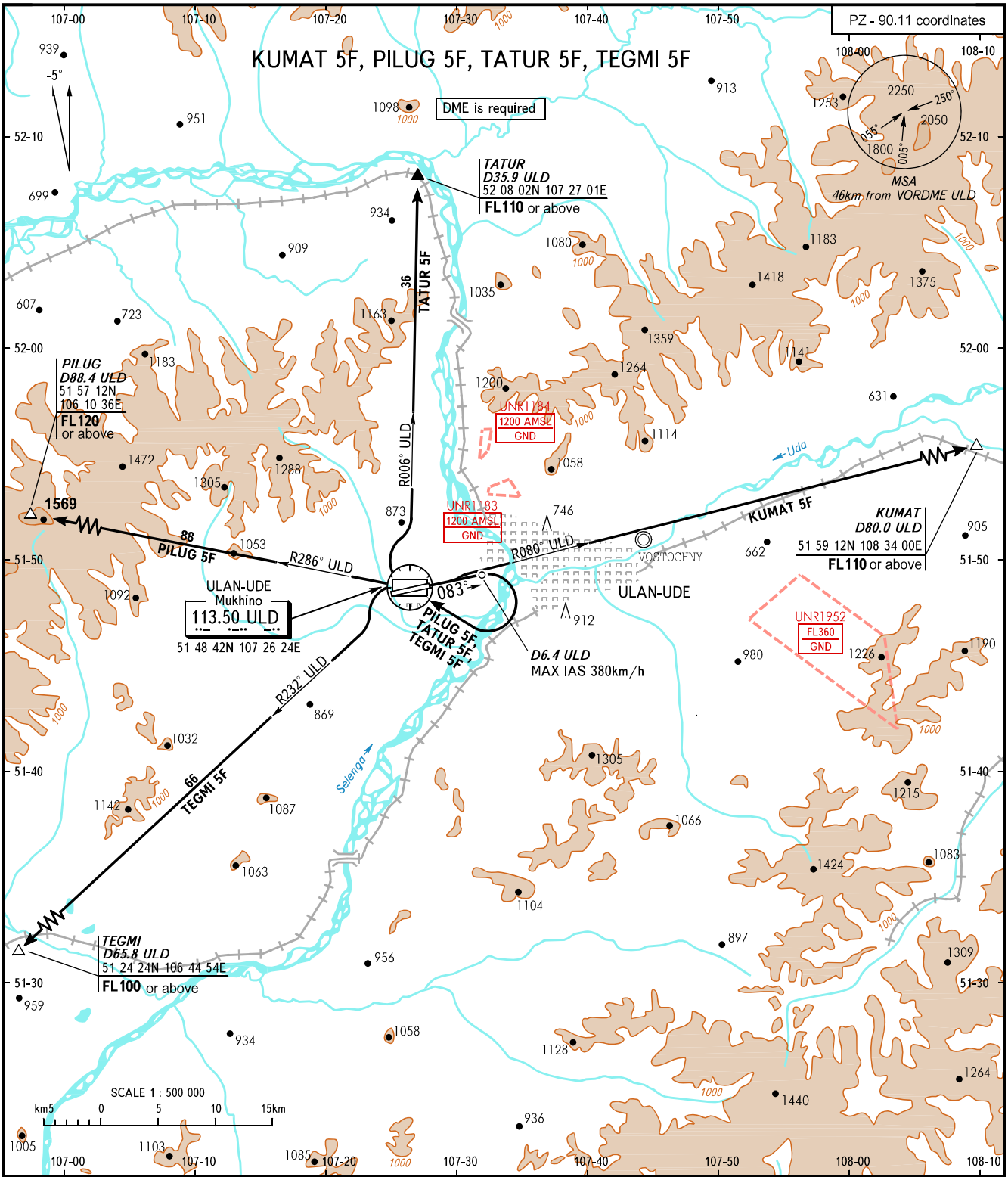
STANDARD DEPARTURE CHART
INSTRUMENT (SID) - ICAO

TRANSITION
HEIGHT : (1800)

ULAN-UDE, RUSSIA

MUKHINO

RWY 08



TOWER	118.100
APPROACH	129.300

WARNING:
MNM climb gradients:
 - 3.8% up to (530) (required due to obstacles), 3.7% up to FL110 (required due to the airspace structure) for SID KUMAT 5F;
 - 5.0% up to FL120 for SID PILUG 5F (required due to obstacles);
 - 5.0% up to (630) (required due to obstacles), 4.8% up to FL110 (required due to the airspace structure) for SID TATUR 5F;
 - 5.0% up to (630) for SID TEGMI 5F (required due to obstacles).

BEARINGS AND TRACKS ARE MAGNETIC
 ALTITUDES, HEIGHTS AND ELEVATIONS ARE IN METRES
 DISTANCES ARE IN KILOMETRES