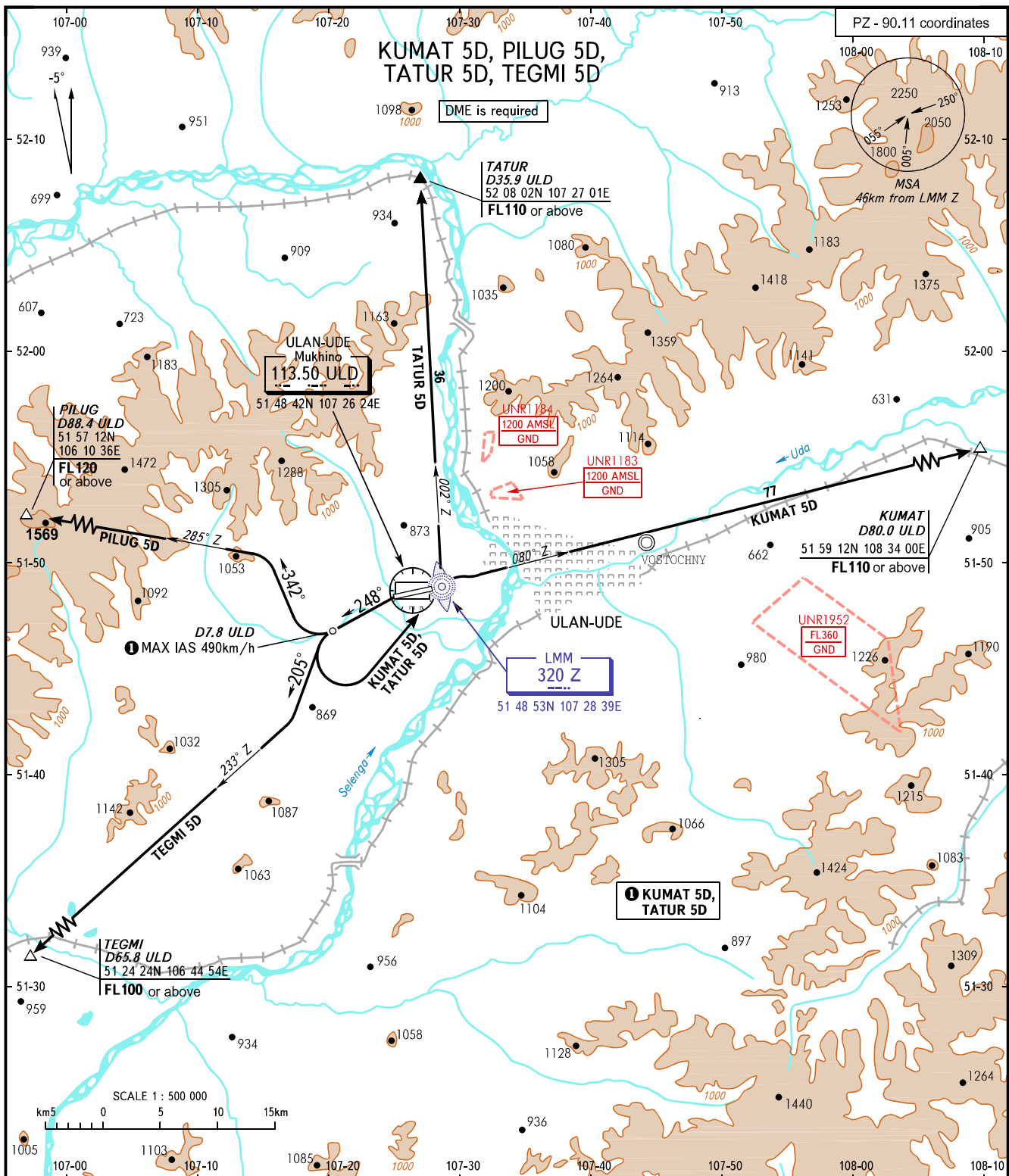


# STANDARD DEPARTURE CHART INSTRUMENT (SID) - ICAO

TRANSITION  
HEIGHT : (1800)

## ULAN-UDE, RUSSIA MUKHINO RWY 26



**WARNING:**

- 1. Take-off track is offset by 15° from RCL.
- 2. SID KUMAT 5D is AVBL if there is clearance to cross UNR1952 (during its activity) or by coordination with ATS unit.
- 3. SID KUMAT 5D, TATUR 5D are AVBL if there is clearance to cross UNR1183, UNR1184 (during their activity) or by coordination with ATS unit.
- 4. If unable to comply with MNM climb gradients, the flight crews must inform ATS unit about it.
- 5. MNM climb gradients (required due to obstacles):
  - 5.0% up to FL110 for SID KUMAT 5D;
  - 7.1% up to FL120 for SID PILUG 5D;
  - 5.0% up to FL110 for SID TATUR 5D;
  - 5.0% up to FL100 for SID TEGMI 5D.

TOWER 118.100  
APPROACH 129.300

BEARINGS AND TRACKS ARE MAGNETIC  
ALTITUDES, HEIGHTS AND ELEVATIONS ARE IN METRES  
DISTANCES ARE IN KILOMETRES

CHANGE: New chart