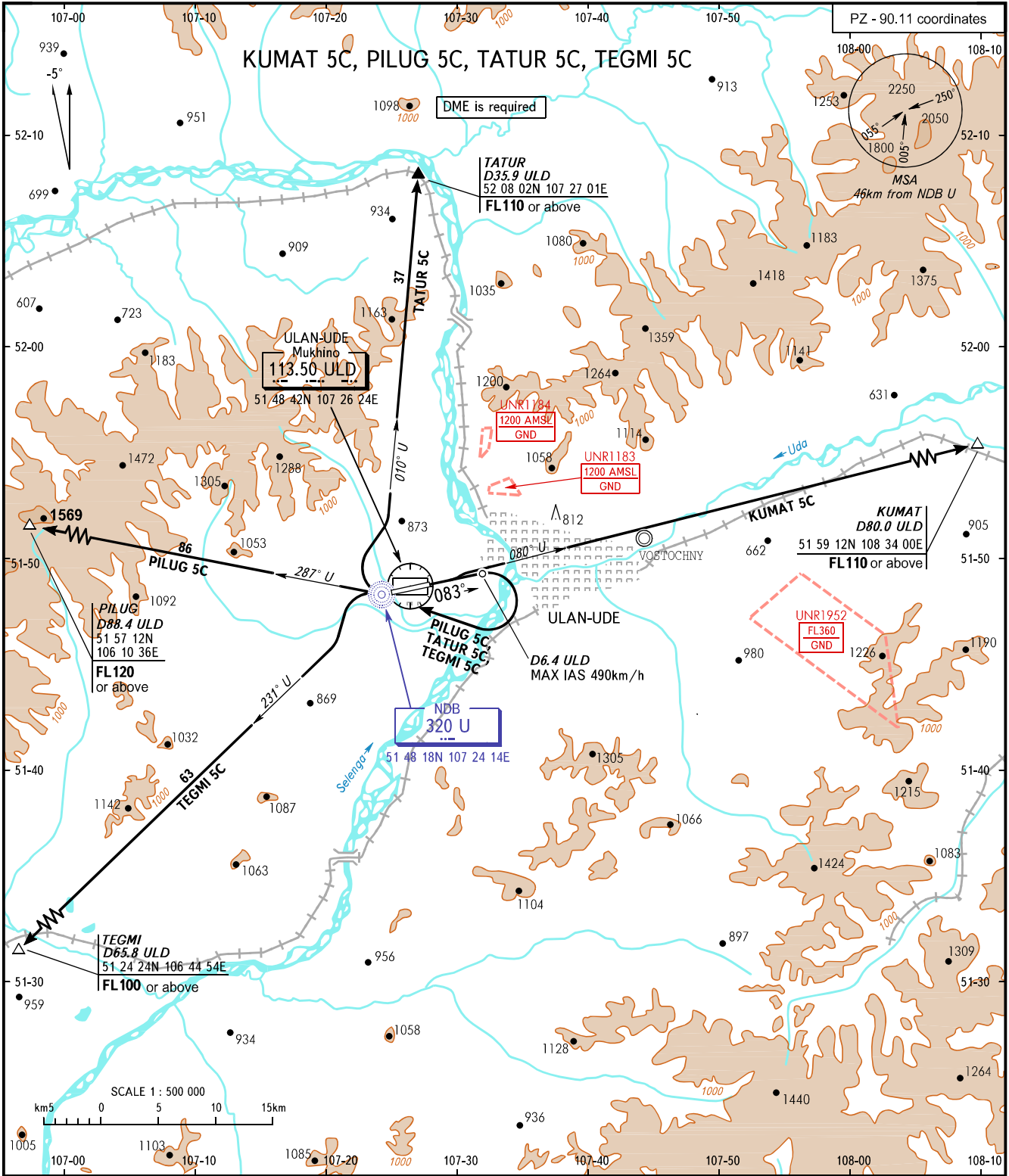


STANDARD DEPARTURE CHART
INSTRUMENT (SID) - ICAO

TRANSITION
HEIGHT : (1800)

ULAN-UDE, RUSSIA
MUKHINO
RWY 08



TOWER **118.100**
APPROACH **129.300**

- WARNING:**
- SID KUMAT 5C is AVBL if there is clearance to cross UNR1952 (during its activity) or by coordination with ATS unit.
 - MNM climb gradients:
 - 4.2% up to (581) (required due to obstacles), 3.7% up to FL110 (required due to the airspace structure) for SID KUMAT 5C;
 - 5.3% up to FL120 for SID PILUG 5C (required due to obstacles);
 - 5.3% up to FL110 for SID TATUR 5C (required due to obstacles);
 - 5.3% up to (1139) for SID TEGMI 5C (required due to obstacles).

BEARINGS AND TRACKS ARE MAGNETIC
ALTITUDES, HEIGHTS AND ELEVATIONS ARE IN METRES
DISTANCES ARE IN KILOMETRES

CHANGE: New chart