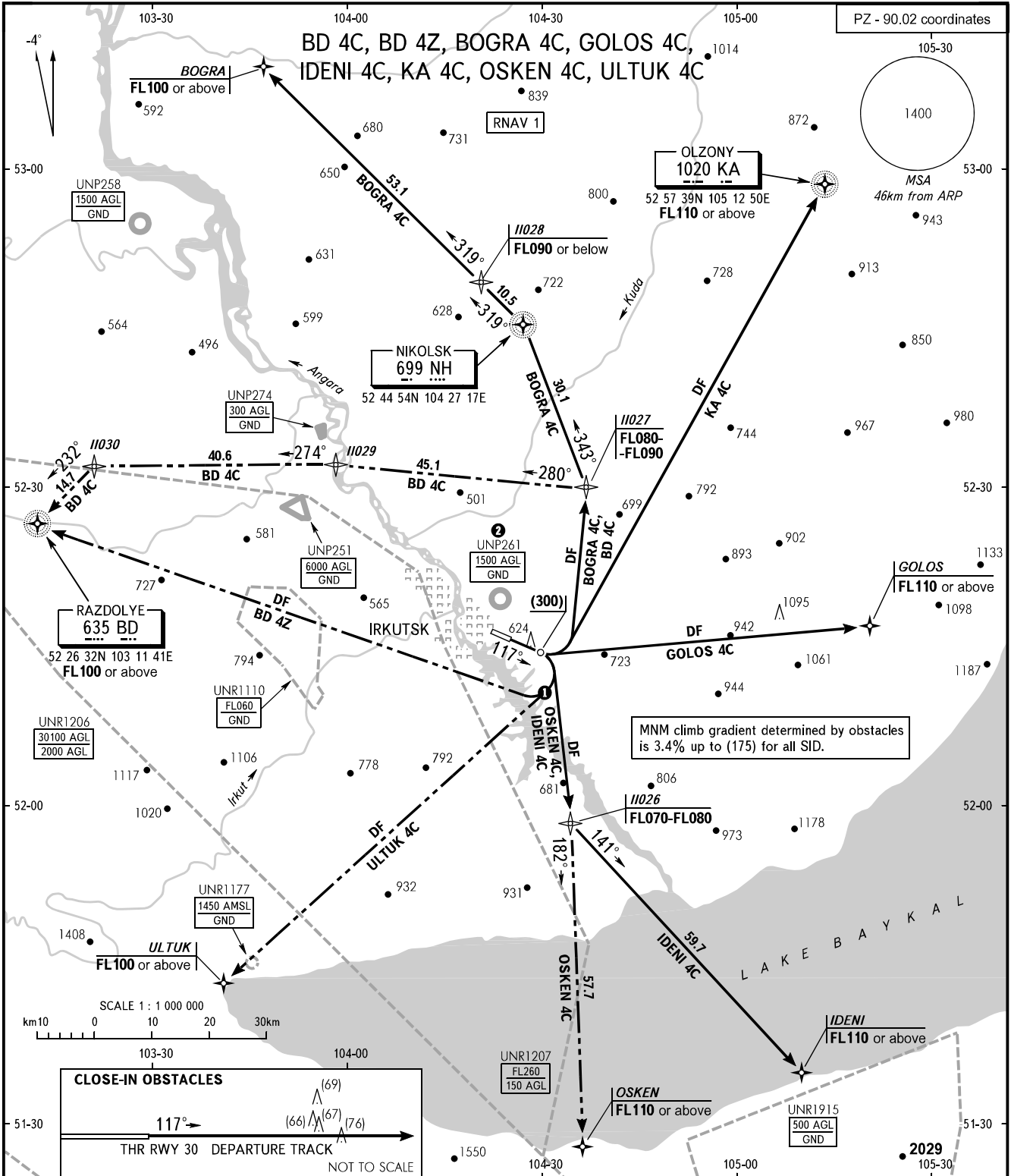


STANDARD DEPARTURE CHART  
INSTRUMENT (SID) - ICAO

TRANSITION  
HEIGHT : (1100)

IRKUTSK, RUSSIA  
IRKUTSK  
RNAV (GNSS) RWY 12



TOWER 118.100  
RADAR 119.300  
APPROACH 125.200

- ① MAX IAS 490km/h
- ② ACFT flights to/from IRKUTSK AD are approved.

- WARNING:**
1. Turn before DER is PROHIBITED.
  2. The minimum climb gradients are as follows (required due to the airspace limitation):
    - 5.3% up to FL080 for SID BD 4C, BOGRA 4C;
    - 4.5% up to FL110 for SID GOLOS 4C;
    - 4.5% up to FL070 for SID IDENI 4C, OSKEN 4C.
  3. When restricted area UNR1207 is active, BD 4Z, BD 4C, OSKEN 4C, ULTUK 4C are available by coordination with ATC.
  4. There is close-in obstacle.

BEARINGS AND TRACKS ARE MAGNETIC  
ALTITUDES, HEIGHTS AND ELEVATIONS ARE IN METRES  
DISTANCES ARE IN KILOMETRES

CHANGE: UNP274, UNR1177